



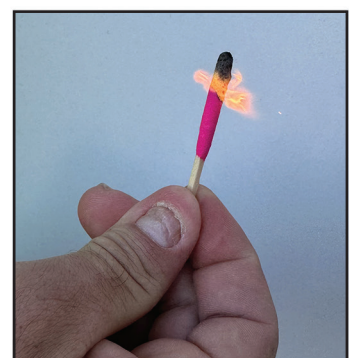
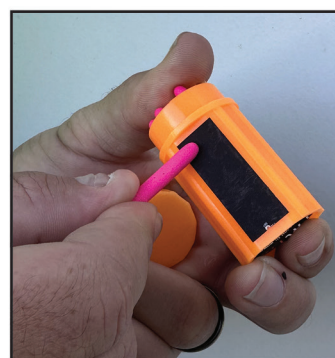
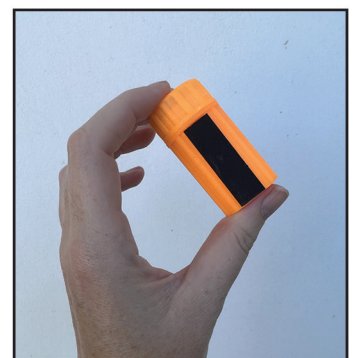
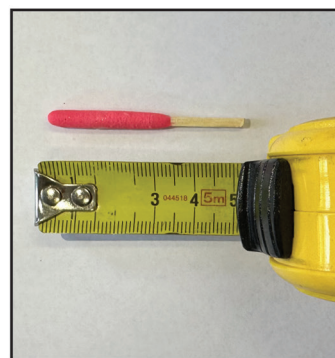
## OUTDOOR MATCHES

Ideal for outdoor work - outdoor Matches can still be lit even after getting wet.

Simply dry out the matches and the striker surface and the matches can easily be used again.

Matches cannot light accidentally, they must be struck on the waterproof striker adhered to the surface of the plastic container.

- Water and wind resistant matches.
- High-visibility orange protective plastic case (i).
- Striker plate on outside of plastic case (ii).
- Pack 20 matches (iii).
- 10 second burn time.
- Each match 5cm in length.



### PRODUCT SPECIFICATIONS

Product Code	WP M20
Unit	Pack 20 Matches
Pack Size	5.5 x 2.6 x 2.6 cm @ 0.005kgs