

NSW RFS RANK DECAL APPLICATION INSTRUCTIONS

RANKRFS COMMISSIONER++ KIT CONTENTS

2x 50mm Rank Letters White "C"

RANK / POSITION: COMMISSIONER

BEFORE GETTING STARTED

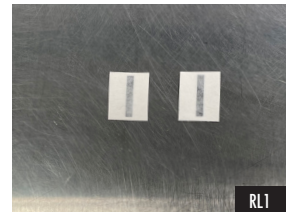
- Remove the Face Shield from the helmet.
- Use a soft cloth to clean the helmet shell of dirt from debris.



RANK LETTERS

RANK LETTERS ARE AVAILABLE IN DIFFERENT COLOURS AND CONFIGURATIONS DEPENDING ON YOUR RANK / POSITION. FOR THE PURPOSES OF THESE INSTRUCTIONS, 'I' IS PICTURED.

- RL1. There are two stickers in a Rank Letters set - both the same size.
- RL2. They are positioned on each side of the helmet, between the two pieces of reflective trim.
- RL3. Run your thumb over the letter to ensure it's adhered to the face paper.
- RL4. Align the sticker in the center, between the two pieces of reflective trim.
- RL5. Slowly and carefully remove the backing paper from the letters.
- RL6. Apply the sticker to the helmet.
- RL7. Run your thumb over the letter several times with the face paper still attached to make sure it's firmly adhered and to press out bubbles and creases.
- RL8. Remove the face paper.
- RL9. Repeat the process on the other side of the helmet.



Scan the QR code with your phone or type the address below into your browsers address bar to access detailed NSW RFS BR9 information.

Direct Link: <http://bit.ly/37nZK80>