

## REMOVING THE OLD COMPONENTS FROM YOUR HELMET

1. Remove the helmets Neck Protector by locating the end, then disengaging the hook and loop by pulling it away from the helmets shell.
- 2a. There are 6 suspension points which fasten the headband to the helmets shell.
- 2b. Hold the first suspension point and push up firmly until you hear it unclip from the dome fastener.
- 2c. Repeat this process for the remaining 5 suspension points.
- 2d. Remove the headband from the helmet.
3. Unbuckle the Pacific quick release clip on the chinstrap.
4. Using the Philips head screwdriver - or similar tool with a smaller head, pop rivets out of each side of the helmet where the Chinstrap is fitted.
5. Remove each of the dome fasteners by pushing out from the inside of the helmet - there are 6 in total.



## FITTING THE BR5 REFURBISHMENT KIT TO YOUR HELMET

- 6a. The chinstrap is in two pieces. Locate the short piece and fit it to the right hand side of the helmet using one of the rivets. The rough side of the eyelet should be positioned against the shell.
- 6b. Attach the long piece to the other side of the helmet using the second rivet. The labels should be pointing inward so they will be against your face when wearing the helmet.
7. Locate the 6 pre-drilled holes around the perimeter of the helmet, push the smaller end of the dome place through each hole.
- 8a. Place the headband back into the helmets shell with the plastic tabs pointing into the shell and the ratchet adjuster at the back.
- 8b. Start with the two side suspension points. Push the suspension point through the slot in the headband, then thread the dome piece through the larger bottom hole and push down until it clicks.
- 8c. Repeat on for the other suspension point on the side of the helmet.



8d. Continue with the other 4 suspension points. Thread the dome piece through the larger bottom hole and push down until you hear it "click" securely in place.

9a. Line up the hook on the neck protector with the corresponding piece of loop on the helmet shell.

9b. Press down then run your finger along the area to ensure the neck protector is firmly fitted.



## S-1. PACIFIC HELMETS USER MANUAL WRITTEN GUIDE

A comprehensive written guide suitable for all Pacific Helmets models, covering fitting, care & maintenance, warranty and more.



PLEASE SCAN THIS CODE WITH  
YOUR MOBILE PHONE TO  
ACCESS THE USER MANUAL

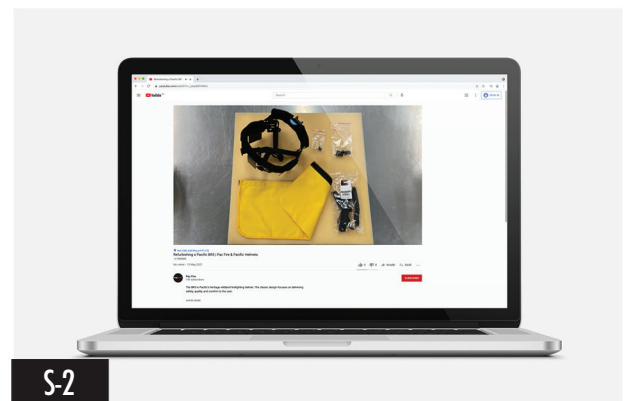


## S-2. REFURBISHING YOUR PACIFIC BR5 HELMET VIDEO

Follow along with us as we fit the BR5 Refurbishment Kit to a Pacific BR5 Helmet in this video presentation.



PLEASE SCAN THIS CODE WITH  
YOUR MOBILE PHONE TO  
ACCESS THE VIDEO



## UPGRADES & ACCESSORIES



PRODUCT CODE A115210

Helmet Bag Sling



PRODUCT CODE BAG5813

Helmet Bag Padded Medium



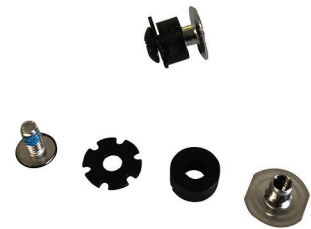
PRODUCT CODE B2138630

Universal Downsize Kit



PRODUCT CODE SBWOOL

Front Lambswool Comfort Pad



PRODUCT CODE GESS MK

Goggle Mount Kit



PRODUCT CODE B2055675

Mesh, Clip On Face Shield for wide brim BR9 & BR5



PRODUCT CODE B2066146

Underwater Kinetics Torch Helmet Clip for Easi On Off Base (EOB)



PRODUCT CODE UKT10034+

Underwater Kinetics 3AA LED Torch



PRODUCT CODE UKT514609-7A+

Underwater Kinetics Red Herculite Torch



PRODUCT CODE UKT14819

Underwater Kinetics Plastic Brim Clip for torch



PRODUCT CODE UKT14818

Underwater Kinetics Stainless Steel Brim Clip for torch



PRODUCT CODE	A107118
Adaro Torch Helmet Clip for Easi On Off Base (EOB)	

PRODUCT CODE	L5PLUS.S
Adaro L5 PLUS LED Torch	

PRODUCT CODE	L5POWER
Adaro L5 POWER LED Torch with flashing beacon	



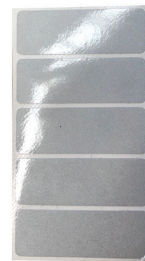
PLEASE SPECIFY HELMET MODEL, FONT TYPE, COLOUR AND TEXT WHEN ORDERING. PICTURED: RED / ARIAL BOLD.

PLEASE SPECIFY HELMET MODEL, FONT TYPE, COLOUR AND TEXT WHEN ORDERING. PICTURED: RED / ARIAL BOLD.

PRODUCT CODE	GESS GCD+
ESS Firestrike Goggles - Double Strap / Clear Lens	

PRODUCT CODE	STICKERNAME
Straight sticker for back of helmet - includes reflective packing plate	

PRODUCT CODE	STICKER AA
Straight sticker for back of helmet - letters only (pictured with face paper, remove after application)	



PLEASE SPECIFY HELMET MODEL, FONT TYPE, COLOUR AND TEXT WHEN ORDERING. PICTURED: RED / ARIAL BOLD.

PLEASE SPECIFY HELMET MODEL, FONT TYPE, COLOUR AND TEXT WHEN ORDERING. PICTURED: RED / ARIAL BOLD.

PRODUCT CODE	STICKERCURVED
Curved sticker for side of helmet - includes reflective packing plate - each	

PRODUCT CODE	STICKER CC
Curved sticker for side of helmet - letters only (pictured with face paper, remove after application) - each	

PRODUCT CODE	A118974
Reflective Trim 5 piece - White/Silver 3M680	



PRODUCT CODE	A118969
Reflective Trim 5 piece - Yellow 3M680	

PRODUCT CODE	SC-14F-032-1
SC-14 All Purpose Cleaner 946ml Spray Bottle - for shell & hard components of helmet	

PRODUCT CODE	FS-C-032-1
CITROSQUEEZE 946ml Spray Bottle - for soft components of helmet	