

BTECH 1 & 2



The philosophy behind BTEch was to produce a comfortable and practical garment, without any compromise to safety.

The short style jacket is designed with ergonomic fit. The trouser measurements provide adequate overlap, so that there is no gap between coat and trousers when bending.

Popular BTEch is now a favourite with many Fire authorities in Australia as well as other countries worldwide.



PRODUCT SPECIFICATIONS

Application	Structural Firefighting
Certification	AS/NZS 4967:2009 AS/NZS 4602.2:2013

JACKET FEATURES

- 2 outer lower pockets with mitred flaps
- 1 internal pocket
- Cuffs with Neoprene anti-wicking barrier
- Moulded zip front with Velcro fastened flap
- American Specification 3M perforated triple trim with Trim Saver
- Hanger loop on under collar

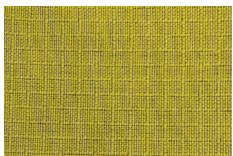
TROUSER FEATURES

- Standard waist trousers with side elastication
- Fixed braces
- Back seat with yoke
- Curved knee pads and Aramid felt internal pads
- Internal hip patch pocket
- Plain trouser hems with Neoprene anti-wicking panels
- American Specification 3M perforated triple trim with Trim Saver

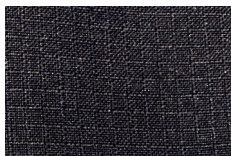


FABRIC OPTIONS

Pac Fire's BTech ensemble comes standard with a Nomex® Delta T outershell in lime or navy.



NOMEX® DELTA T LIME



NOMEX® DELTA T NAVY

MOISTURE BARRIER OPTIONS

BTech 2 includes a moisture barrier in its construction.

The moisture barrier provides added protection from external water penetrating the garment and contacting the skin while effectively wicking away sweat keeping the wearer cool, protecting against steam related injuries and mitigating heat stress.

Pac Fire's standard BTech 2 includes a Gore-Tex® Fireblocker® moisture barrier. BTech 2 can be customised with a different moisture barrier on request. Lead times apply for custom specified moisture barriers.

BTECH TROUSER WEARER MEASUREMENT CHART

WEARER'S HEIGHT	WEARER'S WAIST	GARMENT SIZE
172-179	82-89	SML REGULAR
172-179	90-97	MED REGULAR
172-179	98-105	LGE REGULAR
172-179	106-113	XLG REGULAR
172-179	114-121	2XL REGULAR
172-179	122-129	3XL REGULAR
172-179	130-137	4XL REGULAR

BTECH JACKET WEARER MEASUREMENT CHART

WEARER'S HEIGHT	WEARER'S CHEST	GARMENT SIZE
172-179	92-99	SML REGULAR
172-179	100-107	MED REGULAR
172-179	108-115	LGE REGULAR
172-179	116-123	XLG REGULAR
172-179	124-131	2XL REGULAR
172-179	132-139	3XL REGULAR
172-179	140-148	4XL REGULAR