

NSW RFS RANK DECAL APPLICATION INSTRUCTIONS

RANKRFS CH SUPER++ KIT CONTENTS

- 1x 25mm White Band Set (3 stickers on single sheet)
- 2x 50mm Rank Letters White "CS"
- 1x 10mm White Crown Strips Set (2 stickers on single sheet)

RANK / POSITION: CHIEF SUPERINTENDENT

BEFORE GETTING STARTED

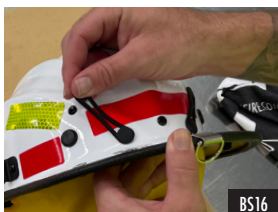
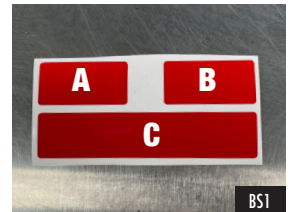
- Remove the Face Shield from the helmet.
- Use a soft cloth to clean the helmet shell from dirt and debris.



25MM BAND SET

THE 25MM BAND SET IS AVAILABLE IN DIFFERENT COLOURS DEPENDING ON YOUR RANK / POSITION. FOR THE PURPOSES OF THESE INSTRUCTIONS, A RED BAND SET IS PICTURED.

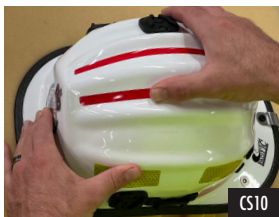
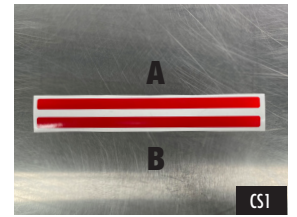
- BS1. The 25mm Band set is made up of 3 stickers, 2 short and 1 long.
- BS2. Remove sticker "A" (as indicated in BS1).
- BS3. Apply to the right side of the helmet, between the earmuff clip and the large black plug.
- BS4. The sticker should be positioned in the middle, between the clip and plug where the helmet shell meets the brim.
- BS5. Run your thumb over the sticker to press out bubbles and creases.
- BS6. Remove sticker "B" (as indicated in BS1).
- BS7. Apply to the left side of the helmet, between the earmuff clip and the large black plug.
- BS8. The sticker should be positioned in the middle, between the clip and plug where the helmet shell meets the brim.
- BS9. Run your thumb over the sticker to press out bubbles and creases.
- BS10. Remove both rubber accessory retention straps by gripping the strap and pulling the plug out of the hole, place them to the side.
- BS11. Remove sticker "C" (as indicated in BS1).
- BS12. Fold the sticker in the middle with the adhesive facing outward and pinch to crease in the center.
- BS13. Position the sticker just above the rivet in the rear of the helmet. The crease in the sticker should be centered in the middle of the center ridge.
- BS14. Let the sticker go so it settles on the helmet.
- BS15. From the center of the sticker out to the edge, use your thumb to fix to the helmet while pushing out air bubbles and creases.
- BS16. Replace the rubber accessory retention straps by pushing the plugs into the holes.



10MM CROWN STRIPS SET

THE 10MM CROWN STRIP SET IS AVAILABLE IN DIFFERENT COLOURS DEPENDING ON YOUR RANK / POSITION. FOR THE PURPOSES OF THESE INSTRUCTIONS, A RED STRIP SET IS PICTURED.

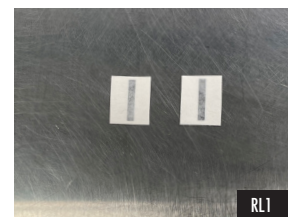
- CS1. The 10mm Crown Strip Set is made up of 2 stickers.
- CS2. They are positioned in the valley on either side of the center ridge of the helmet.
- CS3. Remove sticker "A" (as indicated in CS1).
- CS4. Align the sticker, centered in the valley on the right hand side of the center ridge.
- CS5. Affix the front of the sticker to the helmet, then guide sticker down onto shell with your other thumb, keeping centered in depression between the ridges.
- CS6. Run your thumb over the entire length of the sticker to press out bubbles and creases.
- CS7. Remove sticker "B" (as indicated in CS1).
- CS8. Align the front of sticker "B" with sticker "A" on the other side of the crown ridge. Center the strip in the valley on the left hand side of the center ridge.
- CS9. Affix the front of the sticker to the helmet, then guide sticker down onto shell with your other thumb, keeping centered in depression between the ridges.
- CS10. Run your thumb over the entire length of the sticker several times to press out bubbles and creases.



RANK LETTERS

RANK LETTERS ARE AVAILABLE IN DIFFERENT COLOURS AND CONFIGURATIONS DEPENDING ON YOUR RANK / POSITION. FOR THE PURPOSES OF THESE INSTRUCTIONS, 'I' IS PICTURED.

- RL1. There are two stickers in a Rank Letters set - both the same size.
- RL2. They are positioned on each side of the helmet, between the two pieces of reflective trim.
- RL3. Run your thumb over the letter to ensure it's adhered to the face paper.
- RL4. Align the sticker in the center, between the two pieces of reflective trim.
- RL5. Slowly and carefully remove the backing paper from the letters.
- RL6. Apply the sticker to the helmet.
- RL7. Run your thumb over the letter several times with the face paper still attached to make sure it's firmly adhered and to press out bubbles and creases.
- RL8. Remove the face paper.
- RL9. Repeat the process on the other side of the helmet.



Scan the QR code with your phone or type the address below into your browsers address bar to access detailed NSW RFS BR9 information.

Direct Link: <http://bit.ly/37nZK80>