



# PRODUCT CATALOGUE

## 2021-22



## ABOUT US

Pac Fire was established in 2000 with the founding vision of supplying the highest quality Personal Protective Equipment & Clothing (PPE/C) to Australia's emergency services.

This core motivation has led Pac Fire to represent the standard for excellence in the PPE/C industry. Pac Fire's success is closely tied to two fundamental principles of dependable quality and exceptional performance.

Over the years, Pac Fire's range has grown to include over 500 individual products sourced from iconic brands such as Pacific Helmets, MSA Bristol, BlowHard, Jolly Footwear, Underwater Kinetics, Adalit, YDS, Meret, Responder Wipes, PIP Gloves, Kappler, Kestrel, Pok, SC Products and more.

In a continuing commitment to protecting responder health and well being, and ensuring longevity of PPE/C, Pac Fire established PAC+CARE in early 2018. This flexible managed service utilises the latest in laundering technology and includes a state of the art filtration system ensuring contaminants are removed from clothing and equipment whilst protecting the environment.

Today, Pac Fire has distribution centres located on Queensland's Gold Coast, Adelaide South Australia and Whanganui on New Zealand's North Island. These distribution points in combination with comprehensive sales representation, deliver paramount customer service to the Australasian region.

Whilst the business has grown, the tradition of providing emergency service workers with the highest quality protective clothing and equipment is maintained.



PAC+CARE MANAGED SERVICE CENTRE

## CONTACT US

### PHONE

**1300 731 800**  
from within Australia

**+61 7 3441 7100**  
international calls

### FAX

**(07) 3441 7177**  
from within Australia

**+61 7 3441 7177**  
international

### EMAIL

**SALES@PACFIRE.COM.AU**

### WEBSITE

**WWW.PACFIRE.COM.AU**

### OUR LOCATIONS

**QUEENSLAND BRANCH**  
62 Link Dr  
YATALA QLD 4207  
AUSTRALIA

PH: +61 7 3441 7100

**NEW ZEALAND BRANCH**  
305 Heads Rd  
WHANGANUI 4541  
NEW ZEALAND

PH: +64 6 344 7391

### ABN

60 088 233 783 - PAC FIRE AUSTRALIA PTY LTD

**SOUTH AUSTRALIA BRANCH**  
Unit 3, 53 Cnr Galway & Barnes Ave  
MARLESTON SA 5033  
AUSTRALIA

PH: +61 8 8297 1477

## HELMETS & ACCESSORIES 5-20

STRUCTURAL FIREFIGHTING HELMETS	8-13
WILDLAND FIREFIGHTING HELMETS	14-16
RESCUE HELMETS	16-18
ACCESSORIES	19-20

## PROTECTIVE CLOTHING 21-38

STRUCTURAL FIREFIGHTING GARMENTS	24-29
WILDLAND FIREFIGHTING GARMENTS	30-32
RESCUE GARMENTS	33
FLASH HOODS	34-35
MASKS	35
CHEMICAL SUITS	36-38

## GLOVES 39-42

STRUCTURAL FIREFIGHTING GLOVES	40
WILDLAND FIREFIGHTING GLOVES	41
RESCUE GLOVES	42

## FOOTWEAR 43-46

## LIGHTING, TORCHES & ACCESSORIES 47-50

## BEACONS 51-54

## FANS & VENTILATION 55-58

## FOAM 59-62

## STORAGE OPTIONS 63-65

## EMERGENCY SERVICES BAGS 66-69

STOW BAGS	67
TRANSPORTATION BAGS	68
MEDICAL BAGS	69

## TOOLS & ACCESSORIES 70-76

QUICK FIST CLAMPS	72
JERRY CANS & ACCESSORIES	73-74
WEATHER METERS	75

## CLEANING & RESPONDER HEALTH 77-80

PARTICULATE PROTECTION HOODS	78
DOT SYSTEM BAGS	79
RESPONDER WIPES	80
CLEANING PRODUCTS	80

## PAC+CARE 81-83

## NOTES 84

## IMPORTANT INFORMATION 85

A107118	19	ECOFLEX	31, 32	HF3D MK2 GEN2	13	PRO1042	74	RAKRMSS	65
A115210	20, 67	EF500CM	54	HR55	18	PRO1044	74	RAKRRB-48	64
B2055675	19	EFAT280	52	HR6CFS	16	PRO1044M	75	RAKRRWM	65
B2055679	19	EFAT283	53	HR6L	16	PRO1045	74	RAKSEC-20+	65
B2066019	19	EFAT290	52	HR6V	18	PRO1046	74	RESCUE FLEX	33
B2066146	19	EFAT293	52	HRDOM	18	PRO1046M	75	RF3	60
B2066333	19	EFAT700	53	HSBN900502	73	PRO1050	74	RF3X3	60
B2066338	19	EFAT730	53	HUC5	20	PRO1051	74	RF3X6	60
BAG2388	67	EFBASE	54	I200549	72	PRO1094-1	74	RF6	60
BAG5813	20	EFBASEAV	54	IE1	20	PRO1095	74	RHS-2+	35
BAG5813	67	EFEMS++	54	KL200	78	PRO1096	74	RUBV2	35
BAG5814	20	EFHOOD	54	L1	19, 48	PRO1097	74	RW13160	80
BAG5814	67	EFHOOD2	54	L3000P	48	PRO1150	74	RW13355	80
BAG5816	67	EFMAGBASE	54	L5PLUS.R	19, 48	PRO1151	74	RW13460	80
BAG5817	67	EFMAGCLIP	54	L5PLUS.S	19, 48	PRO1152	74	SBWOOL	19
BAGPPC	67	EFMBAG	54	L5POWER	19, 48	PRO1153	74	SC-14F-032	20, 80
BCRPFL FW G	71	EFSDAG	54	M22-000600	73	PRO1155	74	SCTF	62
BRISTOLHOOD6	34, 78	EFSCCLIP	54	M22-000622	73	PRO1156	74	SFAW138	62
BRISTOLHOOD7	34, 78	EFS	25	MS101L	69	PRO1157	74	SFD003155	62
BTECH	29	ERGO TECH	28	M8101	69	PRO1158	74	SFFB3150A	60
C.1000++	48	EZ-8C	19	M8101A	69	PRO1160	74	SFHIEX	62
C.3000++	48	F-35G	71	M8101 C	69	PRO1161	74	STICKER AA	20
C.5000++	48	FH33	35	M8101 J	69	PRO1162	74	STICKER CC	20
CA00RS	38	FHPFR9723ES	34	M8107	69	PRO1163	74	STICKERCURVED	20
CAG0G8	38	FHUFP-6	73	M8108	69	PRO1165	74	STICKERNAME	20
CAKMOD	38	FHUHDNC-30	73	MFCMY	19	PRO1166	74	UKT10034+	19, 50
CAR080	38	FHUPUL-5	73	MK0801	75	PRO1168	74	UKT14506	19, 50
CD5H457-94	36	F5-C-001	20, 80	MK3000	75	PRO1169	74	UKT14818	19, 50
CD5H458-94	36	F5-C-032	20, 80	MK3000 SLIDECOVER	75	PRO1171	74	UKT17018	19, 50
CF3H4	36	FWF2AR1352	46	MK3550AG	75	PRO1172	74	UKT22101	50
CF3H6	36	FWF2AR1354	46	MK3550AG SLIDECOVER	75	PRO1173	74	UKT514609-7A+	19, 50
CF3H660	36	FWFF300GTIN	46	MK3550FW	75	PRO1174	74	UKT514703	50
CF3H67	36	FWFSF8	45	MK3550FW SLIDECOVER	75	PRO1176	74	UKT5FH	64
CF3H750	36	FWJ 9300GA	45	MM50	20	PRO1177	74	XFLEX	27
CF5HS82-91	36	FWJ 9305GA	45	MV500MESH++	19	PRO1179	74	ZYTX010YE	73
CF5HS83-91	36	FWJ 9381 GA	44	MVH500	19	PRO1180	74		
CL1H459-99	37	G8038W	41	PAC DH-TC-45	73	PRO13300	75		
CLS.1++	48	GBRISTOL56A	40	PAC DH-TC-70	73	PRO23300	75		
CLS.3++	48	GBRISTOL60	41	PAC DH-WC-1	73	QF10012	72		
CLS.5++	48	GESS GCD+	19	PAC RAMP75	76	QF20023	72		
CPPH439-99	37	GESS GCS+	19	PACFOAM	60	QF30055	72		
CPPI1	37	GESS LA	19	PC1	62	QF40023	72		
CPPS2	37	GESS LC	19	PCU3X3	62	QF50052	72		
CPVS1	37	GESS LS	19	POK07415 NEN38	76	QF60023	72		
CPVS4	37	GEX-1 RSQ	42	POK09718 47SLPM	76	QF80023	72		
CPVS555	37	GFWN3	40	PPVBH-20DP	58	QFAAP-STD-45	76		
CS99402YE	38	GFWWCU	41	PPVCOMMANDO	57	QFALP-STD-45	76		
CS99415YE	38	GFWWCW	41	PPVMR+	58	RAKDKH-OZ	64		
CV.1000.24V	48	GINTVX	42	PPVQUICKEE	56	RAKDSHR	64		
CZ1	36	GTTIAN49A	40	PRO0965	74	RAKFDH-DZ	64		
CZ2	36	GXRESCUE	42	PRO0966	74	RAKGDH	64		
CZ3	36	HBR5 CVFS	16	PRO0967	74	RAKGGR	64		
CZ4	36	HBR9SCVMF	15	PRO0972	74	RAKHC-64-2T	64		
CZ5	36	HBR9SCVMF	15	PRO0973	74	RAKHC-64-3T	64		
CZ555555	37	HBR9WBCVMF	15	PRO0993C	75	RAKHH	64		
CZ555556	37	HF10MKVGEN2	13	PRO0995C	74	RAKPPB	64		
DOT-01 NEXTGEN	68, 79	HF11 EP GEN2	13	PRO1040	74	RAKRFD5	65		
DOT-02XL	68, 79	HF15 OTEP GEN2	12	PRO1040M	75	RAKRFS5	65		
DOT-S-01	68, 79	HF16	9, 10, 11	PRO1041	74	RAKRMD5	65		





# HELMETS & ACCESSORIES





## PACIFIC HELMETS: SAFETY WITHOUT COMPROMISE

In 1982, Pacific Helmets was established as a manufacturer of quality Motorcycle Helmets based in Whanganui on the North Island of New Zealand. In 1984, the focus of the Company began to shift in line with the development of the F2 Structural Firefighting Helmet and its inception into the New Zealand Firefighting Service.

Over the years that followed the development of the F2, Pacific Helmets has gained certification from all reputable safety standards organisations globally.

Pacific Helmets now specialises in manufacturing and exporting safety helmet products that balance paramount protection with design functionality and wearer comfort.

Today, Pacific's range exceeds 100 individual helmet models with thousands of options for customisation to meet both individuals and services needs.

## ACHIEVEMENTS & MILESTONES

- 1982** Pacific Helmets was founded and began selling Motorcycle Helmets to the Australasian market.
- 1984** With the development of the Pacific F2, Pacific Helmets tenders for, and wins, the supply of Structural Firefighting Helmets into the New Zealand Fire Service.
- 1986** Pacific Helmets start to manufacture Bicycle Helmets ahead of law being passed in 1994 to make them compulsory in New Zealand.
- 1990** Awarded the tender for supply of Structural Firefighting Helmets for London Fire Brigade with the Pacific F3. A win which would spark a major take up of the Pacific Helmets brand across England and the greater United Kingdom.
- 1993** Following the adoption of the F3 by the London Fire Brigade, Pacific Helmets were awarded the supply of Structural Firefighting Helmets for Hong Kong Fire Department.
- 1995** Pacific Helmets starts supplying helmets to the British Ambulance Service including Northern Ireland.
- 1997** Most metropolitan and some country Fire Services across Australia start purchasing Pacific Structural and Wildland helmets.
- 2000** The Australian SES adopts the new Pacific R5 Rescue Helmet. The R5 is still the helmet of choice for the SES today, 20 years later.
- 2008** Revolutionary OTEP™ (One Touch Eye Protector) developed by Pacific Helmets for introduction into selected Structural Firefighting Helmets.
- 2015** Pacific Helmets wins the SILVER award at the Best Design Awards (NZ) for the F10 Mk5 Structural Firefighting Helmet.
- 2015** After years of research and development the Pacific F15 jet style Structural Firefighting Helmet is released, creating industry excitement.
- 2016** Pacific Helmets wins the GOLD award at the Best Design Awards (NZ) for the R6 Patrolter Rescue Helmet.
- 2017** Pacific Helmets wins the SILVER award at the Best Design Awards (NZ) for the F15 Structural Firefighting Helmet.
- 2017** A revolution in water safety is developed by Pacific Helmets. The R6V MkII 'Seeker', designed specifically for water rescue and water recreation is released.
- 2018** Pacific Helmets is nominated for the 'International Achievement of the Year' award, which has come as a result of the establishment of distribution networks in China, and opening an office in the Netherlands.
- 2019** The cornerstone F3D Mk II Structural Firefighting Helmet is introduced with a GEN2 liner that is fully modular and doesn't require tools to remove, clean and maintain.
- 2019** Pacific Helmets F15 Structural Firefighting Helmet awarded to eligible volunteer CFA firefighters who hold Breathing Apparatus and Search and Rescue competencies.
- 2020** Queensland Ambulance Services chooses the Pacific R6 'Dominator' as their service issued rescue helmet.
- 2020** The Pacific BR9 Wildland Firefighting Helmet was awarded to NSW RFS members - the largest fire service in the world.

- 2021** The first of it's kind. Pacific Helmets releases the first multi-layer, multi application helmet in the world certified to AS/NZS 4067:2012 and AS/NZS 1801:1997 Type 3. The premium F16 helmet joins the Pacific range.

## CUSTOMISED TO MEET YOUR NEEDS

Flexible manufacturing processes and an innovative design team allow Pacific Helmets to offer customers the ability to customise helmets to suit their exact requirements and preferences.

**A COMMITMENT TO RESEARCH AND DEVELOPMENT.** The Pacific Helmets approach to research and development allows the factory to innovate and create unique points of difference while ensuring the strictest compliance to regulatory requirements. The Global Standards framework sets the basis for all Pacific's development work while their BSI verified, in-house testing facility enables them to quickly deliver new innovations to satisfied customers the world over.

Pacific Helmets take great pride in the fact that every item they produce is manufactured to the highest expectations in terms of safety, quality and comfort.

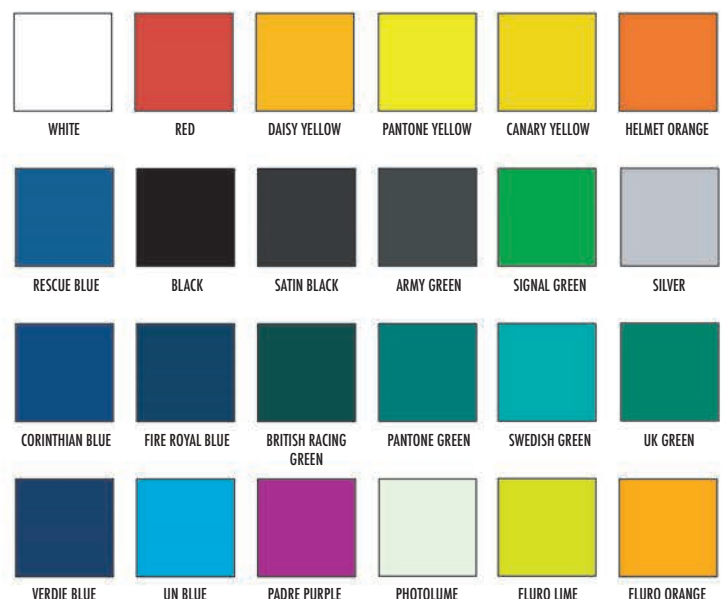
**A SIZE TO SUIT.** The Pacific ratchet headband comes standard inside all Pacific Helmets models and is adjustable between 52-65cm. Pacific's headband can be adjusted so the head sits higher or lower inside the helmet - further customising the fit. Specialised downsizing kits are available and can be installed easily, without the need of specialised tools. Extra small and extra large headband options are also available on request.

**COMFORT, A MAJOR CONCERN.** A wide range of comfort padding options available including padded air mesh, Merino wool and leather.



**STRIKING THE RIGHT BALANCE.** Multiple chin strap configurations are available. All Pacific Helmets chinstraps are designed to be adjusted at multiple locations further refining product fit.

**COLOUR.** Pacific Helmets offer the widest range of colour options available on the market. Helmets are painted with UV resistant paint, and come in a gloss finish. Some colours are available in a satin (matte) finish.



(Representative swatches of the standard colour range. Intended as a guide only)









## PACIFIC F16 MULTI-LEVEL FIREFIGHTING HELMET **NEW**

An innovation from Pacific Helmets, the F16's unique two level protection system allows flexibility when arriving on scene at a situation.

The F16 is literally two helmets in one. Combine levels 1 & 2 for a structurally certified helmet or wear level 1 on it's own for exceptional wildland fire and rescue protection.

### F16 LEVEL 1 & 2 - STRUCTURAL FIRE

When the two levels of the F16 are combined, the wearer is protected by a certified, AS/NZS 4067:2012 structural firefighting helmet.

The F16 provides the protection of two helmet shells and a polyurethane impact liner. This results in unsurpassed impact and penetration protection.

The unique hinge and lock system between the two helmets works to absorb external shocks, further protecting the firefighter.

**A. DUPONT™ KEVLAR® REINFORCED FIBREGLASS COMPOSITE SHELL** provides integral strength and excellent penetration protection. This lightweight shell is chemical and UV resistant with inherent heat and flame resistance. Accentuated shell lines provide additional impact and crush protection.

**B. FULL CRANIUM POLYURETHANE LINER.** Excellent thermal barrier. Unique crumple zone for superior shock absorption (not visible).

**C. PREMIUM REFLECTIVE TRIM** with high retro-reflectivity for increased visibility. 6 pieces of 3M™ 680 - supplied fitted to the helmet.

**D. CUSTOM DECALS:** front plinth, torch plinth with badge, vinyl decals, or custom branding (not pictured).

**E. ADVANCED POLYMER CHASSIS.** Platform for accessory integration and helmet docking.

**F. CONNECTOR PLATES:** Attach torch and other accessories by way of Easi On Off Base (EOB).

**G. LEVEL 2 RELEASE LEAVER:** Easy release and detachment of Level 2 of F16.

**H. CLEAR INTERNAL FACE SHIELD** provides high speed particle protection. Face Shield is heat and flame resistant with anti-scratch and anti-fog properties. Designed to fit perfectly over BA masks. Extra area of coverage and internal space through multi pivot system.

**I. PACIFIC RATCHET ADJUSTABLE HEADBAND,** sizing range from 52-65cm. Simple operation with a single gloved hand. Comfortable front and rear leather padding. 3 stage height adjustment. Pivot nape can be adjusted at a range of 100° for personalised fit.

**J. 6-POINT RIBBON SUSPENSION WITH PADDED AIR MESH.** Even weight distribution with a secure fit that remains comfortable over prolonged use. Modular for easy cleaning and replacement without the need of special tools.

**K. 4-POINT CHIN STRAP.** Made from fire resistant Nomex®, includes leather cheek padding. Single handed adjustment at multiple locations for maximum comfort, optimum fit, and increased stability.

**L. PACIFIC QUICK RELEASE BUCKLE.** Easily secured, released, and adjusted with a gloved hand.

**M. FLAME RESISTANT NECK PROTECTOR.** Black, Double Layer, Gusseted Nomex®, 220mm long.

**N. COMMS BRACKET.** The liner is fitted with a bracket (left side) for mounting a Titan HUC-5 boom mic and speaker.

**O. REAR STORAGE HANGER.** Made from fire resistant, industrial plastic.

**P. COLOUR.** The F16 is available in over 25 colours, White pictured.

PRODUCT CODE	HF16 (LEVEL 1 & 2)	
APPLICATION	Structural Firefighting Technical Rescue	
CERTIFICATION	HELMET AS/NZS 4067:2012	EYEWEAR AS/NZS 1337.1:2010





## F16 LEVEL 1 - WILDLAND FIRE & RESCUE

Level 1 on it's own is a lightweight and compact helmet certified to AS/NZS 1801:1997 Type 3 suitable for wildland firefighting and rescue.

The only AS/NZS 1801 helmet with an impact liner - the F16 level 1 provides wearers industry leading impact protection.

Pacific's renowned ratchet adjustment enables the headband to be resized to fit a wide range of head sizes, and the angle of the nape strap can be adjusted to perfectly suit your unique head shape.

**A. DUPONT™ KEVLAR® REINFORCED FIBREGLASS COMPOSITE SHELL** provides integral strength and excellent penetration protection. This lightweight shell is chemical and UV resistant with inherent heat and flame resistance. Accentuated shell lines provide additional impact / crush protection.

**B. POLYURETHANE LINER.** Excellent thermal barrier. Unique crumple zone for superior shock absorption and internal air circulation (not visible).

**C. PREMIUM REFLECTIVE TRIM** with high retro-reflectivity for increased visibility. 6 pieces of 3M™ 680 - supplied fitted to the helmet.

**D. CUSTOM DECALS:** additional vinyl decals, or custom branding available for F16 Level 1 (not pictured).

**E. INTERNAL CONNECTOR PLATES:** Attach torch and other accessories by way of Easi On Off Base (EOB).

**F. PACIFIC RATCHET ADJUSTABLE HEADBAND,** sizing range from 52-65cm. Simple operation with a single gloved hand. Comfortable front and rear leather padding. 3 stage height adjustment. Pivot nape can be adjusted at a range of 100° for personalised fit.

**G. 6-POINT RIBBON SUSPENSION WITH PADDED AIR MESH.** Even weight distribution with a secure fit that remains comfortable over prolonged use. Modular for easy cleaning and replacement without the need of specialised tools.

**H. 4-POINT CHIN STRAP.** Made from fire resistant Nomex®, includes leather cheek padding. Single handed adjustment at multiple locations for maximum comfort, optimum fit, and increased stability.

**I. PACIFIC QUICK RELEASE BUCKLE.** Easily secured, released, and adjusted with a gloved hand.

**J. FLAME RESISTANT NECK PROTECTOR.** Black, Double Layer, Gusseted Nomex®, 220mm long.

**K. COMMS BRACKET.** The liner is fitted with a bracket (left side) for mounting a Titan HUC-5 boom mic and speaker - pictured on internal shot (sold separately).

**L. COLOUR.** The F16 is available in over 25 colours, White pictured.



PRODUCT CODE	HF16 (LEVEL 1)
APPLICATION	Wildland Firefighting Technical Rescue
CERTIFICATION	AS/NZS1801:1997 Type 3









Best Design Awards  
Winner 2017



## PACIFIC F15 STRUCTURAL FIREFIGHTING HELMET

The Pacific Helmets F15 is the perfect combination of safety, comfort and quality protection.

Manufactured from the unique DuPont™ Kevlar® and fibreglass composite shell that has made Pacific Helmets synonymous with fire and rescue helmets.

This jet style design helmet is compatible with modern communications equipment and the clear face shield can be completely deployed over all major breathing apparatus face masks.

**A. DUPONT™ KEVLAR® REINFORCED FIBREGLASS COMPOSITE SHELL** provides integral strength and excellent penetration protection. This lightweight shell is chemical and UV resistant with inherent heat and flame resistance. Accentuated shell lines provide additional impact / crush protection.

**B. GEN2 FULL CRANIUM POLYURETHANE LINER.** Excellent thermal barrier. Unique crumple zone for superior shock absorption and internal air circulation.

**C. PREMIUM REFLECTIVE TRIM** with high retro-reflectivity for increased visibility. 6 pieces of 3M™ 680 - supplied fitted to the helmet.

**D. CUSTOM DECALS:** front plinth, torch plinth with badge, vinyl decals, or custom branding (front plinth pictured).

**E. ADVANCED POLYMER CHASSIS.** Platform for accessory integration.

**F. ADAPTER PLATES:** Attach torch by way of Easi On Off Base (EOB) on adaptor plates.

**G. CLEAR INTERNAL FACE SHIELD** provides high speed particle protection. Face Shield is heat and flame resistant with anti-scratch and anti-fog properties. Designed to fit perfectly over SCBA face masks. Extra area of coverage and internal space through multi pivot system.

**H. ONE TOUCH EYE PROTECTOR (OTEP™)** provides high speed particle protection. Eye protector is heat and flame resistant with anti-scratch and anti-fog properties. Easy operation with a gloved hand.

**I. PACIFIC RATCHET ADJUSTABLE HEADBAND,** sizing range from 52-65cm. Simple operation with a single gloved hand. Comfortable front and rear leather padding. 3 stage height adjustment. Pivot nape can be adjusted at a range of 100° for personalised fit.

**J. 6-POINT RIBBON SUSPENSION WITH PADDED AIR MESH.** Even weight distribution with a secure fit that remains comfortable over prolonged use. Modular for easy cleaning and replacement without the need of specialised tools.

**K. 4-POINT CHIN STRAP.** Made from fire resistant Nomex®, includes leather cheek padding. Single handed adjustment at multiple locations for maximum comfort, optimum fit, and increased stability.

**L. PACIFIC QUICK RELEASE BUCKLE.** Easily secured, released, and adjusted with a gloved hand.

**M. FLAME RESISTANT NECK PROTECTOR.** Black, Double Layer, Gusseted Nomex®, 200mm long.

**N. COMMUNICATIONS BRACKET.** The GEN2 liner is fitted with a bracket (left side) for mounting a Titan HUC-5 boom mic and speaker - pictured on internal shot (HUC-5 pictured on the internal shot - sold separately).

**O. REAR STORAGE HANGER.** Made from fire resistant, industrial plastic.

**P. COLOUR.** The F15 is available in over 25 colours, Daisy Yellow pictured.

PRODUCT CODE	HF15 OTEP GEN2	
APPLICATION	Structural Firefighting Technical Rescue	
CERTIFICATION	HELMET AS/NZS 4067:2012	EYEWEAR AS/NZS 1337.1:2010

# HELMETS & ACCESSORIES



## PACIFIC F11 'DRAGONFLY' STRUCTURAL FIREFIGHTING HELMET

The F11 has been designed to maximise protection and practicality for the diverse range of duties modern Emergency Service personnel are called on to perform.

**HELMET SHELL:** Dupont™ Kevlar® & Fibreglass reinforced shell with accentuated lines providing additional impact / crush protection.

**LINER:** GEN2 full cranium polyurethane impact liner.

**REFLECTORS:** Premium silver reflective trim. 6 pieces, supplied fitted to the helmet.

**FACE SHIELD:** Clear, external, clip on.

**LIGHTING:** Easi on-off base (EOB) for torch mounted on the right hand side.

**EYE PROTECTION:** pull down internal eye protection.

**EARMUFF BRACKETS:** for helmet mounted earmuffs with 25mm tongue.

**CHINSTRAP:** 4-point with leather cheek padding and Pacific quick release buckle.

**HEADBAND:** Pacific ratchet headband adjustable between 52-65cm with pivot nape strap.

**INTERNALS:** 6-point ribbon cradle harness with padded air mesh.

**NECK PROTECTOR:** 220mm long, pleated double layer, Nomex®.

**STORAGE:** Rear hanger, flame resistant industrial plastic.

**COMMUNICATIONS BRACKET:** Positioned on the left suitable for a Titan HUC-5 boom mic (sold separately).



## PACIFIC F10 MKV STRUCTURAL FIREFIGHTING HELMET

F10 MkV is an incredibly lightweight and balanced structural firefighting helmet.

The accentuated longitudinal crest provides additional shock absorption and structural rigidity.

**HELMET SHELL:** Dupont™ Kevlar® & Fibreglass reinforced shell with accentuated lines providing additional impact / crush protection.

**LINER:** GEN2 full cranium polyurethane impact liner.

**REFLECTORS:** Premium silver reflective trim. 6 pieces, supplied fitted to the helmet.

**FACE SHIELD:** Clear, bubble, internal.

**LIGHTING:** Easi on-off bases (EOB) mounted to both sides of the helmet.

**EYE PROTECTION:** One Touch Eye Protector (OTEP™).

**CHINSTRAP:** 4-point with leather cheek padding and Pacific quick release buckle.

**HEADBAND:** Pacific ratchet headband adjustable between 52-65cm with pivot nape strap.

**INTERNALS:** 6-point ribbon cradle harness with padded air mesh.

**NECK PROTECTOR:** 200mm long, pleated double layer, Nomex®.

**STORAGE:** Rear hanger, flame resistant industrial plastic.

**COMMUNICATIONS BRACKET:** Positioned on the left suitable for a Titan HUC-5 boom mic (sold separately).



## PACIFIC F3D MKII GEN2 STRUCTURAL FIREFIGHTING HELMET

Pacific's commitment to continuous design improvements has lead to the development of a GEN2 liner for the traditional F3D MkII helmet model.

**HELMET SHELL:** Dupont™ Kevlar® & Fibreglass reinforced shell.

**LINER:** GEN2 full cranium polyurethane impact liner.

**REFLECTORS:** Premium silver reflective trim. 4 pieces, supplied fitted to the helmet.

**FACE SHIELD:** Clear, external, fixed.

**LIGHTING:** Easi on-off base (EOB) for torch mounted on right hand side.

**CHINSTRAP:** 4-point with leather cheek padding and Pacific quick release buckle.

**HEADBAND:** Pacific ratchet headband adjustable between 52-65cm with pivot nape strap.

**INTERNALS:** 6-point ribbon cradle with padded air mesh.

**NECK PROTECTOR:** 200mm long, double layer fire resistant material.

**COMMUNICATIONS:** Pacific communications bracket fitted to left hand side of the liner.

**STORAGE:** Rear hanger, metal.

**COMMUNICATIONS BRACKET:** Includes bracket for mounting a Titan HUC-5 boom mic (sold separately).

**COMMUNICATIONS BRACKET:** Positioned on the left suitable for a Titan HUC-5 boom mic (sold separately).

PRODUCT CODE	HF11 EP GEN2		PRODUCT CODE	HF10MKVGEN2		PRODUCT CODE	HF3D MK2 GEN2 <b>NEW</b>	
APPLICATION	Structural Firefighting Technical Rescue		APPLICATION	Structural Firefighting Technical Rescue		APPLICATION	Structural Firefighting	
CERTIFICATION	HELMET AS/NZS 4067:2012	EYEWEAR AS/NZS 1337.1:2010	CERTIFICATION	HELMET AS/NZS 4067:2012	EYEWEAR AS/NZS 1337.1:2010	CERTIFICATION	HELMET AS/NZS 4067:2012	EYEWEAR AS/NZS 1337.1:2010







# HELMETS & ACCESSORIES



## PACIFIC BR9 STANDARD SHELL WILDLAND FIREFIGHTING HELMET

The BR9 from Pacific Helmets is a popular lightweight bushfire helmet.

The standard shape incorporates a narrow side brim and multiple crown ridges allow for extra strength and air flow.

**HELMET SHELL:** Dupont™ Kevlar® & Fibreglass reinforced shell. Multiple crown ridges deliver additional impact protection.

**REFLECTORS:** Premium silver reflective trim. 5 pieces, supplied loose.

**FACE SHIELD:** Clear, external, clip-on.

**LIGHTING:** Easi on-off base (EOB) for torch mounted on the right hand side.

**CHINSTRAP:** 3-point with Pacific quick release buckle.

**HEADBAND:** Pacific ratchet headband adjustable between 52-65cm.

**INTERNALS:** 6-point ribbon cradle with mesh insert. Front and rear merino comfort padding.

**EARMUFF BRACKETS,** for helmet mounted earmuffs with 25mm tongue.

**NECK PROTECTOR:** 190mm long, single layer fire resistant material.

**STORAGE:** Rear hanger, metal.



## PACIFIC BR9 CAP STYLE SHELL WILDLAND FIREFIGHTING HELMET

The BR9 is a versatile head protection platform for Emergency Services that can support a full range of accessories.

The cap style shape has a short front brim, no rear brim and scalloping on both sides for better earmuff mounting.

**HELMET SHELL:** Dupont™ Kevlar® & Fibreglass reinforced shell. Multiple crown ridges deliver additional impact protection.

**REFLECTORS:** Premium silver reflective trim. 5 pieces, supplied loose.

**FACE SHIELD:** Clear, external, clip-on.

**LIGHTING:** Easi on-off base (EOB) for torch mounted on the right hand side.

**CHINSTRAP:** 3-point with Pacific quick release buckle.

**HEADBAND:** Pacific ratchet headband adjustable between 52-65cm.

**INTERNALS:** 6-point ribbon cradle with mesh insert. Front and rear merino comfort padding.

**EARMUFF BRACKETS,** for helmet mounted earmuffs with 25mm tongue.

**NECK PROTECTOR:** 190mm long, single layer fire resistant material.

**STORAGE:** Rear hanger, metal "D" ring attached to the back loop of the 3-point chinstrap



## PACIFIC BR9 WIDE BRIM SHELL WILDLAND FIREFIGHTING HELMET

All the features of the popular standard BR9 with the addition of a wider brim over the sides of the helmet.

The wider brim offers more protection to the side of the head while directing water and precipitation away from the neck.

**HELMET SHELL:** Dupont™ Kevlar® & Fibreglass reinforced shell. Multiple crown ridges deliver additional impact protection.

**REFLECTORS:** Premium silver reflective trim. 5 pieces, supplied loose.

**FACE SHIELD:** Clear, external, clip-on.

**LIGHTING:** Easi on-off base (EOB) for torch mounted on the right hand side.

**CHINSTRAP:** 3-point with Pacific quick release buckle.

**HEADBAND:** Pacific ratchet headband adjustable between 52-65cm.

**INTERNALS:** 6-point ribbon cradle with mesh insert. Front and rear merino comfort padding.

**EARMUFF BRACKETS,** for helmet mounted earmuffs with 25mm tongue.

**NECK PROTECTOR:** 190mm long, single layer fire resistant material.

**STORAGE:** Rear hanger, metal.

<b>PRODUCT CODE</b>	HBR9SCVMF	<b>PRODUCT CODE</b>	HBR9SCVMF	<b>PRODUCT CODE</b>	HBR9WBCVMF
<b>APPLICATION</b>	Wildland Firefighting	<b>APPLICATION</b>	Wildland Firefighting Technical Rescue	<b>APPLICATION</b>	Wildland Firefighting
<b>CERTIFICATION</b>	AS/NZS1801:1997 Type 3 <small>(reflective trim and neck protector must be fitted to satisfy the standard)</small>	<b>CERTIFICATION</b>	AS/NZS1801:1997 Type 3 <small>(reflective trim and neck protector must be fitted to satisfy the standard)</small>	<b>CERTIFICATION</b>	AS/NZS1801:1997 Type 3 <small>(reflective trim and neck protector must be fitted to satisfy the standard)</small>



## PACIFIC BR5 MKII WILDLAND FIREFIGHTING HELMET

Pacific's heritage wildland firefighting helmet.

The classic design focuses on delivering safety, quality, and comfort to the user.

The wider brim offers more protection to the side of the head while directing water and precipitation away from the neck

**HELMET SHELL:** Dupont™ Kevlar® & Fibreglass reinforced shell with single crown ridge.

**REFLECTORS:** Premium silver reflective trim. 5 pieces, supplied loose.

**FACE SHIELD:** Clear, external, clip-on.

**LIGHTING:** Easi on-off base (EOB) for torch mounted on the right hand side.

**CHINSTRAP:** 2-point with Pacific quick release buckle.

**HEADBAND:** Pacific ratchet headband adjustable between 52-65cm.

**INTERNALS:** 6-point ribbon cradle.

**NECK PROTECTOR:** 200mm long, single layer fire resistant material.



## PACIFIC R6C "CHALLENGER" MULTI-PURPOSE HELMET

Contemporary design meets function - the Pacific 'Challenger' is the definition of 'multi-purpose'.

**HELMET SHELL:** Dupont™ Kevlar® & Fibreglass reinforced shell.

**REFLECTORS:** Premium silver reflective trim. 6 pieces, supplied fitted to the helmet.

**FACE SHIELD:** Clear, external, clip-on.

**PULL DOWN INTERNAL EYE PROTECTION:** secondary eye protection that provides high speed particle impact protection.

**LIGHTING:** Easi on-off base (EOB) for torch mounted on the right hand side.

**CHINSTRAP:** 4-point with Pacific low profile buckle.

**HEADBAND:** Pacific ratchet headband adjustable between 52-65cm.

**INTERNALS:** 6-point ribbon cradle with mesh insert. Front and rear leather comfort padding. Polyurethane cap and ultra-stop padding provide additional shock absorption.

**EARMUFF BRACKETS,** for helmet mounted earmuffs with 25mm tongue.

**ACCESSORIES STRAPS:** 2 x webbed rear straps and front 4-point bungee for convenient retention of accessories.

**NECK PROTECTOR:** 200mm long, single layer fire resistant material.



## PACIFIC R6L "PATROLLER" MULTI-PURPOSE HELMET

Gold

A tactical rescue helmet with a unique rail system to accommodate several different accessories. A great head protection solution for USAR, paramedics, technical rescue workers and wildland firefighters.

**HELMET SHELL:** Dupont™ Kevlar® & Fibreglass reinforced shell.

**REFLECTORS:** Premium silver reflective trim. 8 pieces, supplied fitted to the helmet.

**PULL DOWN INTERNAL EYE PROTECTION:** provides high speed particle impact protection.

**RAILS:** to attach multiple accessories.

**CHINSTRAP:** 4-point with Pacific low profile buckle and chincup.

**HEADBAND:** Pacific ratchet headband adjustable between 52-65cm.

**INTERNALS:** 6-point ribbon cradle with mesh insert. Front and rear leather comfort padding. Polyurethane cap and ultra-stop padding provide additional shock absorption.

**ACCESSORIES STRAPS:** 2 x front straps for convenient retention of accessories.

**NECK PROTECTOR:** 200mm long, single layer black Nomex®.

PRODUCT CODE	HBR5 CVFS	PRODUCT CODE	HR6CFS	PRODUCT CODE	HR6L <b>NEW</b>
APPLICATION	Wildland Firefighting	APPLICATION	Wildland Firefighting Technical Rescue	APPLICATION	Wildland Firefighting Technical Rescue
CERTIFICATION	AS/NZS1801:1997 Type 3 <small>(reflective trim and neck protector must be fitted to satisfy the standard)</small>	CERTIFICATION	AS/NZS1801:1997 Type 3 <small>(reflective trim and neck protector must be fitted to satisfy the standard)</small>	CERTIFICATION	AS/NZS1801:1997 Type 3 <small>(reflective trim and neck protector must be fitted to satisfy the standard)</small>









## PACIFIC R6V "DOMINATOR" RESCUE HELMET

The 'Dominator' is made for complex rescue situations. It's modern, compact design that focuses on user comfort and protection.

**HELMET SHELL:** Pacific Fibretuff Composite Shell.

**REFLECTORS:** Premium silver reflective trim. 8 pieces, supplied fitted to the helmet.

**FACE SHIELD:** Clear, external, clip-on.

**PULL DOWN INTERNAL EYE PROTECTION:** secondary eye protection that provides high speed particle impact protection.

**LIGHTING:** Easi on-off base (EOB) for torch mounted on the right hand side.

**CHINSTRAP:** 4-point with Pacific low profile buckle and chincup.

**HEADBAND:** Pacific ratchet headband adjustable between 52-65cm.

**INTERNALS:** 6-point ribbon cradle with mesh insert. Front and rear leather comfort padding. Polyurethane cap and ultra-stop padding provide additional shock absorption.

**VENT:** Dynamic Sealed Ventilation System (DSVS™).

**EARMUFF BRACKETS,** for helmet mounted earmuffs with 25mm tongue.

**ACCESSORIES STRAPS:** 2 x webbed rear straps and front 4-point bungee for convenient retention of accessories.

**NECK PROTECTOR:** 180mm long, single layer fire resistant material.



## PACIFIC R6V MK II "SEEKER" RESCUE & RECREATION HELMET

The R6V MkII Seeker from Pacific Helmets has been designed specifically for water rescue and water recreation applications.

The specialised ventilation system can be opened and closed depending on the situation - when closed the vent is sealed, water tight.

**HELMET SHELL:** Pacific Fibretuff Composite Shell.

**REFLECTORS:** Premium silver reflective trim - 6 pieces supplied fitted to the helmet.

**LIGHTING:** Easi on-off base (EOB) for torch - right hand side.

**CHINSTRAP:** 4-point with Pacific low profile buckle.

**HEADBAND:** Pacific ratchet headband adjustable between 52-65cm.

**INTERNALS:** Form moulded Polyethylene padding.

**VENT:** Dynamic Sealed Ventilation System (DSVS™).

**WATER RELEASE HOLES:** Precision engineered, optimally positioned.

**EAR COVERS** made from closed cell foam. Removable.

**ACCESSORIES STRAPS:** 2 x front and 1 x rear for convenient retention of accessories.



## PACIFIC R5S RESCUE HELMET

The Pacific R5S is the helmet of choice for many rescue crews around the globe.

This popular helmet strikes the perfect balance between wearer comfort and protection while incorporating all the features you expect from a Pacific Helmet.

Vented (HRSSLV) and 'no brim' (HR5NB) versions of the R5 are also available.

**HELMET SHELL:** Dupont™ Kevlar® & Fibreglass reinforced shell with single crown ridge.

**REFLECTORS:** Premium silver reflective trim. 5 pieces, supplied loose.

**LIGHTING:** Easi on-off base (EOB) for torch mounted on the right hand side.

**CHINSTRAP:** 3-point with Pacific quick release buckle.

**HEADBAND:** Pacific ratchet headband adjustable between 52-65cm.

**INTERNALS:** 6-point ribbon cradle.

**EARMUFF BRACKETS,** for helmet mounted earmuffs with 25mm tongue.

**ACCESSORIES STRAPS:** 1 x rear webbed strap and front 3-point bungee for convenient retention of accessories.

**NECK PROTECTOR:** 200mm long, single layer fire resistant material.

PRODUCT CODE	HRDOM	PRODUCT CODE	HR6V	PRODUCT CODE	HR5S
APPLICATION	Technical Rescue Paramedic	APPLICATION	Water Rescue Water Recreation	APPLICATION	Technical Rescue Paramedic
CERTIFICATION	AS/NZS1801:1997 Type 1 & 2	CERTIFICATION	EN 1385:1997	CERTIFICATION	AS/NZS1801:1997 Type 1 & 2

# HELMETS & ACCESSORIES



B2066338

## ALUMINISED HOOD

Protects your F15 B2066338 (pictured), F10 MkV B2066333 or F3D B2066019 during live fire training.



## LAMBSWOOL FRONT COMFORT PAD

Upgrade the front comfort pad on a wildland fire or rescue helmet (AS/NZS 1801) to comfortable lambswool.



B2055679



B2055675

## CLIP ON MESH FACE SHIELD

Attaches to Easi On Off Bases (EOB) Standard & Cap Style BR9 B2055679, BR5 & Wide Brim BR9 B2055675.



## MESH FACE SHIELD

Attaches to via earmuff clips using mesh face shield holder MVH500. Compatible with R5 Series helmets.

PRODUCT CODE	B2066338	PRODUCT CODE	SBWOOL	PRODUCT CODE	B2055679, B2055675	PRODUCT CODE	MV500MESH++
--------------	----------	--------------	--------	--------------	--------------------	--------------	-------------



GESS GCD+

## ESS FIRESTRIKE GOGGLES

Available in double strap GESS GCD+ and single strap GESS GCS+ configuration.

Replacement lenses in clear GESS LC, amber GESS LA and smoke GESS LS available.



## PAC FIRE EARMUFFS

Mounts to Pacific 25mm earmuff clips for 31dB SNR (Class 5) hearing protection.



## ADARO L1 TORCH

Can be mounted on any helmet or hard hat using the included magnet mount.

Refer page 48 for full specification.



L5PLUS.S

## ADARO L5 PLUS

Attaches to Pacific Helmets Easi On Off Base (EOB) via A107118 clip.

Alkaline batteries L5PLUS.S or a 3.7v Li-ion Rechargeable battery L5PLUS.R.

PRODUCT CODE	GESS GCD+, GESS GCS+	PRODUCT CODE	EZ-8C	PRODUCT CODE	L1	PRODUCT CODE	L5PLUS.S, L5PLUS.R
--------------	----------------------	--------------	-------	--------------	----	--------------	--------------------



## ADARO L5 POWER

Attaches to Pacific Helmets Easi On Off Base (EOB) via A107118 clip.

Includes position location beacon - refer page 48 for full specification.



## ADARO TORCH CLIP

Attach Adaro L5 PLUS or L5 POWER to Pacific Helmets Easi On Off Base (EOB).



## VIZION® HEADLAMP

Can be mounted on helmets and hard hats via the elasticated headband.

Refer page 50 for full specification



## UNDERWATER KINETICS 3AA CPO TORCH

Attaches to Pacific Helmets Easi On Off Base (EOB) via B2066146 clip or brim via UKT14818 / UKT14819.

PRODUCT CODE	L5POWER	PRODUCT CODE	A107118	PRODUCT CODE	UKT17018	PRODUCT CODE	UKT10034+
--------------	---------	--------------	---------	--------------	----------	--------------	-----------



## UNDERWATER KINETICS 4AA TORCH

Attaches to Pacific Helmets Easi On Off Base (EOB) via B2066146 clip or brim via UKT14818 / UKT14819.



## UNDERWATER KINETICS RED HERCULITE

Attaches to Pacific Helmets Easi On Off Base (EOB) via B2066146 clip or brim via UKT14818 / UKT14819.



## UNDERWATER KINETICS TORCH CLIP

Attach Underwater Kinetics UKT10034+, UKT145066 or UKT514609-7A+ to Pacific Helmets Easi On Off Base (EOB).



## UNDERWATER KINETICS STAINLESS STEEL CLIP

Attach Underwater Kinetics UKT10034+, UKT145066 or UKT514609-7A+ to the brim of a hard hat or helmet.

PRODUCT CODE	UKT14506	PRODUCT CODE	UKT514609-7A+	PRODUCT CODE	B2066146	PRODUCT CODE	UKT14818
--------------	----------	--------------	---------------	--------------	----------	--------------	----------



UK Underwater Kinetics



## UNDERWATER KINETICS PLASTIC CLIP

Attach Underwater Kinetics UKT10034+, UKT145066 or UKT514609-7A to the brim of a hard hat or helmet.

PRODUCT CODE UKT14819

PACIFIC



## PACIFIC HELMETS "SLING" BAG

The Helmet sling bag is a convenient and economical way to store and carry your Pacific Helmets, helmet.

PRODUCT CODE A115210

PACFIRE



BAG5814

## PADDED HELMET BAG

Padded helmet bag, available in two sizes: small BAG5814 (for rescue helmets) and medium BAG5813 (for firefighting helmets).

PRODUCT CODE BAG5814, BAG5813

PACFIRE



## NAME STICKER

Straight sticker for the back of helmets - usually for names. Available with reflective backing plate STICKERNAME or without STICKER AA. Please specify text colour, font and helmet model when ordering.

PRODUCT CODE STICKERNAME, STICKER AA

PACFIRE



## CURVED STICKER

Curved sticker for the sides of helmets. Available with reflective backing plate STICKERCURVED or without STICKER CC. Please specify text colour, font and helmet model when ordering.

PRODUCT CODE STICKERCURVED, STICKER CC

PRODUCTS



## CITROSQUEEZE PRE-TREATER

Recommended, NFPA 1851 compliant pre-treater for soft components of helmets - in a 946ml spray bottle.

PRODUCT CODE FS-C-032-6

PRODUCTS



## CITROSQUEEZE TECHNICAL DETERGENT

NFPA 1851 compliant technical detergent for soft components of helmets - in a 3.8l jug.

PRODUCT CODE FS-C-001

PRODUCTS



## SC-14 ALL PURPOSE CLEANER

Recommended cleaning agent for helmet shell and all hard components - in a 946ml spray bottle.

PRODUCT CODE SC-14F-032-6



TITAN COMMUNICATION SYSTEMS

## TITAN FIRECOM HUC5 BOOM MICROPHONE HEADSET

The HUC5 headset is a durable integrated boom microphone and speaker. The noise cancelling boom microphone is IP67 rated and flexible allowing positioning of the microphone for maximum compatibility with various items of PPE. The speaker assembly sits under the helmet brim and attaches to the Pacific Helmets communications bracket.

PRODUCT CODE HUC5

CABLE SPEC UL 94 V.0

MTBF Approximately 4,998 hours

DIMENSIONS 35 x 10 x 4cm / 0.175kg

CERTIFICATION BOOM MICROPHONE IP67  
SPEAKER ASSEMBLY IP55

TITAN COMMUNICATION SYSTEMS



## TITAN IN-EAR MICROPHONE HEADSET

The Titan In-Ear Headset with Microphone is the perfect critical communication solution for users in challenging, loud environments that need clear communication at all times. The patented In-Ear Microphone captures speech patterns in the ear canal to deliver clear sound even when you are whispering. The In-Ear Headset comes with various foam sizes to ensure optimal comfort when using the headset.

PRODUCT CODE IE1 **NEW**

CABLE SPEC UL 94 V.0

MTBF Approximately 800 hours

DIMENSIONS 10.5 x 10.5 x 4.5cm / 0.075kg

CERTIFICATION IP67

TITAN COMMUNICATION SYSTEMS



## TITAN MM50 REMOTE SPEAKER MICROPHONE

The Titan MM50 is the must have Remote Speaker Microphone for first responders. The Nexus and 3.5mm jack sockets makes headset integration easy and is the ideal solution for users needing to connect helmet audio systems with a portable radio. The MM50 features two Push-To-Talk buttons, enhanced controls and IP67 ingress rating. Titan's MM50 unit can be configured to most major radio brands.

PRODUCT CODE MM50 **NEW**

CABLE SPEC UL 1581 VW-1 TPU

MTBF MTBF data not yet available

DIMENSIONS 9.5 x 7.0 x 2.8cm / 0.140kg

CERTIFICATION IP67



# PROTECTIVE CLOTHING



■ MSA BRISTOL ECOFLEX WILDLAND 'CLASH'  
JACKET P31 & ERGOTECH ACTION ELITE  
TROUSERS P28



## MSA BRISTOL

With over 50 years' experience in the specification, design and manufacture of firefighter Personal Protective Equipment (PPE) it is little wonder that MSA Bristol's garments now protect firefighters in over 100 countries across the globe.

MSA Bristol specialises in creating custom PPE solutions to meet the requirements of an individual service. Garments can be uniquely customised with a choice of outershell fabric, moisture barrier and thermal liner.

Over 300 different product feature variations can be added to one of MSA Bristol's standard designs to construct the most functional and comfortable garments.

## ACHIEVEMENTS & MILESTONES

- 1961** Wathen Gardiner & Co, formed an independent business, Bristol Uniforms' to focus on developing protective clothing for firefighters handling emergencies at RAF airfields in the UK.
- 1967** The arrival of specialised fabrics and fibres like DuPont™ Nomex® enabled the development and introduction of new specialised fire clothing to replace the woollen fire tunic.
- 1970** The T63 was introduced as the forerunner of the modern fire suit and incorporated a serge material with a fire retardant finish.
- 1995** The first European standard for firefighter clothing, EN469:1995 was introduced after three years in development.
- 2000** Bristol begins their managed services system which includes cleaning, decontamination, inspection, maintenance, garment tracking, collection and delivery.
- 2003** After years of research and collaboration with major agencies in the UK, Ergotech Action ensembles were released spearheading a new generation of lightweight PPE.
- 2015** A revolution in moisture barriers was released - GORE® Parallon™. Soon after it's debut, Parallon™ was offered as an option when customising XFlex ensembles.
- 2017** Based on the revolutionary XFlex design, EcoFlex Wildland was launched. EcoFlex was developed to address the unique challenges and environmental factors faced by wildland firefighters in Australia.
- 2017** Titan PBI® Gloves were launched in Australia - the first textile structural firefighting gloves certified to AS/NZS 2161.6:2014.
- 2017** Numerous Bristol Uniforms products, including Titan PBI® gloves and the XFlex ensemble were selected as part of the prestigious UK Collaborative Framework project.
- 2018** In line with a growing focus on firefighter health, Bristol releases the NanoFlex hood range that incorporates traditional flash hood features as well as protection from potentially harmful particulates.
- 2018** Bristol's Titan PBI® textile gloves are selected as the new structural firefighting glove for Fire & Rescue New South Wales (FRNSW).
- 2018** NanoFlex for the win. Bristol's NanoFlex PBI® hood becomes Tasmania Fire Service's new firefighting hood.
- 2019** Fire & Rescue New South Wales (FRNSW), one of the largest urban fire services in the world, select Bristol XFlex as their new structural firefighting ensemble.
- 2020** A harmonious approach. Bristol's composite leather / textile gloves are granted Australian Certification and are released to the market.
- 2020** ACT Fire & Rescue Service move forward with Bristol XFlex as their new structural firefighting ensemble.
- 2021** MSA Safety purchases Bristol Uniforms. Combining years of expertise in the safety industry with an unwavering dedication to protect the world's first responders, Bristol Uniforms becomes MSA Bristol.
- 2021** MSA Bristol EOS arrives on Australian shores. Named after the Greek Goddess of dawn, EOS builds on the premium XFlex design with a strong move toward improving protection against harmful particulates.

**OUTERSHELL FABRIC**, protects the wearer from flame and radiant heat during structural fire operations.



PBI® MAX™

COMPOSITION: 30% Kevlar®, 70% PBI® Kevlar® Spun Yarns  
WEIGHT: 205gsm  
DEVELOPED BY: Safety Components



NOMEX 360™

COMPOSITION: 73% Kevlar®, 14% Nomex®, 12% PBO, 1% Antistat  
WEIGHT: 170gsm  
DEVELOPED BY: Safety Components



TITAN PBI® (1260)

COMPOSITION: 74% PBI® (proprietary blend), 23% Nomex®, 3% Kevlar®  
WEIGHT: 220gsm  
DEVELOPED BY: Hainsworth

**MOISTURE MANAGEMENT**, protects against external water penetrating the garment while effectively wicking away sweat. Part of a three-layer, structural fire garment.



GORE® PARALLON™

COMPOSITION: Face / fabric 100% Aramid & content, 70% Aramid, 30% FR Viscom membrane based on EPTFE  
WEIGHT: 370gsm  
DEVELOPED BY: W. L. Gore & Associates, Inc.



GORE® CROSSTECH® AIRLOCK

COMPOSITION: 2-layer laminate of PTFE film on meta-aramid/para-aramid non-woven with chemical-resistant closed cell foam silicone spacers  
WEIGHT: 225gsm  
DEVELOPED BY: W. L. Gore & Associates, Inc.

**THERMAL LINER**. Designed to provide protection from heat and proximity to flame in a three-layer, structural fire garment.



NOMEX® SLICK LINER

COMPOSITION: 73% Kevlar®, 14% Nomex®, 12% PBO, 1% Antistat  
WEIGHT: 170gsm  
DEVELOPED BY: Sofileta

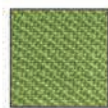


GLIDE ICE™

COMPOSITION: 60% Nomex® Filament, 40% Nomex® / Lenzing FR Spun Yarn  
DEVELOPED BY: Safety Components

NEW

**WILDLAND FIREFIGHTING TECHNICAL FABRIC**. Developed specifically for single layer applications, wildland firefighting technical fabrics are lightweight, breathable and durable.



KARVIN

COMPOSITION: Woven. 65% Lenzing FR, 30% Nomex®, 5% Kevlar®  
WEIGHT: 245gsm  
DEVELOPED BY: Estambri



ECO DRY-SHIELD

COMPOSITION: Woven. 31% Wool / Lenzing FR and 69% DuPont™ Nomex®  
WEIGHT: 240gsm  
DEVELOPED BY: Hainsworth



VULKAN

COMPOSITION: Rip-Stop. 64% Lenzing FR, 30% Meta-Aramid, 5% Para-Aramid, 1% Antistat  
WEIGHT: 220gsm  
DEVELOPED BY: Textil Santanderina

NEW









## EOS STRUCTURAL FIREFIGHTING ENSEMBLE NEW

EOS is the new structural firefighting ensemble from leading manufacturer MSA Bristol. MSA Bristol EOS builds on the success of XFlex and the UK Collaborative Framework ranges, retaining popular ergonomic sports styling and advanced protection from quality technical fabrics.

The new design and features focus on providing a high level of protection against emerging risks faced by firefighters.

### JACKET

- A.** Distinctive sports styling. Ergonomic and flexible design.
- B.** Waist hem curved up at front and down at back delivering optimum coverage and overlap where needed.
- C.** Concave seams on the sleeves and back pleats provide greater ease of movement.
- D.** Shoulder yoke shaped for comfort, especially while wearing SCBA.
- E.** Double zip flap extends to neck with internal zip guard to protect throat.
- F.** Stiff standalone collar providing full protection for the neck and throat with soft knitted inner collar.
- G.** Durable YKK zip secures the front of the jacket. Vertical pocket under zip flap

**H.** Ergonomically designed elbow includes new EOS padding system. SECURISKIN on the outside for increased durability.

**I.** Hem of sleeve curved over back of hand for additional protection. SECURISKIN around glove cuff for additional durability.

**J.** Particulate-blocking wrist cuffs with thumb loops.

**K.** Two large pockets with pull tab and hook and loop closure located on the back of the garment. Positioning reduces particulate build up and facilitates thorough, easy cleaning.

**L.** 3M™ SCOTCHLITE™ 5690 series triple trim. Flexible, durable, tear and catch resistant applied via heat transfer, flat against the outershell material eliminating a particulate build up point.

**M.** Particulate ingress blocking skirt around the torso secured by hook and loop tab.

**N.** Large inspection port with zip closure.

**O.** Hanging loop for storage.

**P.** Large logo / service branding area on the back of the jacket.

### TROUSERS

**Q.** Natural waistline at front with high curved back.

**R.** Centrally placed YKK double zip with hook and loop and press stud fastener.

**S.** High visibility, 48mm wide, adjustable "H" braces. Detachable.

**T.** Large cargo pockets with drain holes and pull tab.

**U.** Inside hem lined with neoprene to minimise abrasion from footwear.

**V.** Ergonomically designed knee with SECURISKIN fabric on the outside for increased durability. New internal padding system for comfort and protection.

**W.** 3M™ SCOTCHLITE™ 5690 series, heat transfer triple trim.

**X.** Large inspection port with zip closure.

**Y.** Trousers gator minimises convective heat flow and contamination up the trouser leg.

**Z.** Hook and loop closure. Abrasion resistant SECURISKIN fabric around perimeter of leg opening.

**1.** SECURISKIN panel on inside of ankle provides additional abrasion resistance and durability.

**2.** Hanger loop for easy storage.

<b>APPLICATION</b>	Structural Firefighting
<b>SIZES</b>	28 Male   28 Female Made to measure sizes are available
<b>CERTIFICATION</b>	AS 4967:2019





**FIRE + RESCUE**  
**NEW SOUTH WALES**

**BRIGADES**



[www.fire.nsw.gov.au](http://www.fire.nsw.gov.au)

**WATSON**





## XFLEX STRUCTURAL FIREFIGHTING ENSEMBLE

Ergonomically designed, the XFlex focuses on delivering maximum comfort for a vast range of male and female body types.

The distinctive sports styling of XFlex allows the ensemble to move with the firefighter resulting in greater flexibility and less energy expenditure.

### JACKET

- A.** Tapered body shape.
- B.** Waist hem curved up at front and down at back delivering optimum coverage and overlap where needed.
- C.** Shoulder yoke shaped for comfort, especially while wearing breathing apparatus.
- D.** Under arm gussets paired with unique shoulder shape allow for full rotational arm movement.
- E.** Double zip flap extends to neck with internal zip guard to protect throat.
- F.** Stiff standalone collar providing full protection for the neck and throat with soft knitted inner collar.
- G.** Ergonomic 3D articulated elbow for greater flexion. SECURISKIN for increased abrasion resistance and durability.

**H.** Hem of sleeve curved over back of hand for additional protection.

**I.** Deep return ensures gloves interface well inside the sleeve. Includes internal thumb loops.

**J.** Two large landscape pockets with drain holes, radio pocket, a pen pocket, torch holder and a hidden vertical pocket under zip flap.

**K.** American Specification 3M perforated triple trim with Trim Saver.

**L.** Inspection port with zip closure.

**M.** Hanging loop for storage.

**N.** Large logo / service branding area on the back of the jacket.

### TROUSERS

- O.** Natural waistline at front with high curved back.
- P.** Centrally placed double zip including hook and loop with press stud fastener.
- Q.** Removable "H" pattern braces with unique webbing slide adjuster.
- R.** Fully articulated, 3D knee shaping greater movement. SECURISKIN coating delivers durability and protection.
- S.** Large twin action pleat cargo pockets with drain holes.

**T.** American Specification 3M perforated triple trim with Trim Saver.

**U.** Extra large inspection port with zip closure.

**V.** Telescopic trouser cuff to minimise convective heat flow up the leg.

**W.** Leg opening designed for ease of donning.

**X.** Hanger loop for easy storage.

### FABRIC & MOISTURE BARRIER OPTIONS

Pac Fire's standard XFlex ensemble comes with a Nomex 360™ outershell and GORE® PARALLON™ 600 moisture management system.

The XFlex design is completely customisable to meet a specific person or agencies requirements. Lead times will apply for these garments due to the highly customisable nature of XFlex.

<b>APPLICATION</b>	Structural Firefighting
<b>SIZES</b>	28 Male   28 Female Made to measure sizes are available
<b>CERTIFICATION</b>	AS 4967:2019



## ERGOTECH ACTION ELITE STRUCTURAL FIREFIGHTING ENSEMBLE

Developed after careful research and extensive user trials into the ergonomics of firefighter activities, the ErgoTech Action Elite has become the standard by which lightweight firefighter PPE is measured for comfort and performance.

ErgoTech has been developed in close collaboration with the world's leading fibre and fabric manufacturers. It has become a globally recognised design by fire agencies looking to equip their firefighters with PPE, which combines outstanding protection with low physiological impact.

### JACKET

- A. Collar and throat tab shape provide optimal compatibility with helmet and fire hood.
- B. Shaped panel over the shoulder eliminates the shoulder seam and makes a smoother line with greater comfort when wearing breathing apparatus.
- C. Increased underarm gusset allows more manoeuvrability when reaching overhead.
- D. Two action pleats added at the back shoulder.
- E. Tecashield on elbows.
- F. Cuffs with thumb holes.

- G. American specification 3M™ perforated triple trim.
- H. Inspection port with zip closure.
- I. Two large landscape pockets, two radio pockets, a pen pocket and a torch holder.
- J. Hanging loop for storage.
- K. Loop panels on front left and right breast for removable hook & loop badges.
- L. Large logo / service branding area on the back of the jacket.

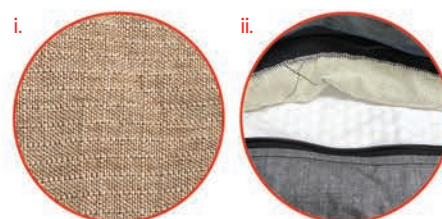
### TROUSERS

- M. Top of trouser contoured to the body with raised back and elasticated adjustment across lumbar region.
- N. Removable "H" pattern braces – designed not to twist.
- O. Articulated knees with convex seams for greater flexibility when bending/climbing.
- P. Shaped seaming on back of knee to reduce fullness when crawling.
- Q. Tecashield on knees provides protection and greater durability.
- R. Two large half bellow pockets.
- S. Inspection port with zip closure.

- T. American specification 3M™ perforated triple trim.
- U. Hook & loop leg openings.
- V. Hanger loop for easy storage.

### FABRIC & MOISTURE BARRIER OPTIONS

Pac Fire's standard Ergotech Action Elite ensemble comes with a TITAN PBI® 1260 outershell (i) and GORE® CROSSTECH® AIRLOCK® (ii) moisture barrier.



Ergotech Action Elite can be customised with a different outershell fabric and moisture barrier on request. Lead times apply for custom garments.

APPLICATION	Structural Firefighting
SIZES	28 Male   28 Female Made to measure sizes are available
CERTIFICATION	AS/NZS 4967:2009





## BTECH STRUCTURAL FIREFIGHTING ENSEMBLE

The philosophy behind BTEch was to produce a comfortable and practical garment, without any compromise to safety.

The short style jacket is designed with ergonomic fit. The trouser measurements provide adequate overlap, so that there is no gap between coat and trousers when bending.

### JACKET

- A. Stiff collar providing full protection for the neck and throat.
- B. Flip back throat tab.
- C. Two large Welt pockets with mitred flaps, radio pocket and mic loop.
- D. Large internal pocket with care and maintenance label.
- E. Moulded zip front with hook & loop fastened flap.
- F. Cuffs with neoprene anti-wicking barrier.
- G. American Specification 3M triple trim.
- H. Hanger loop on under collar.
- I. Large logo / service branding area on the back of the jacket.

### TROUSERS

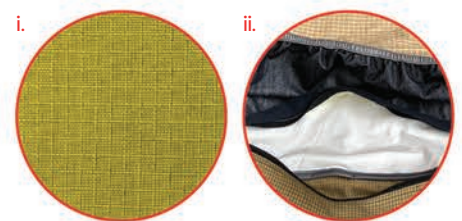
- J. Standard waist trousers with side elastication.
- K. Two Bellow pockets with rectangular flaps and metal eyelets.
- L. Fixed braces.
- M. Back seat with yoke.
- N. Curved knee pads and Aramid felt internal pads.
- O. Internal hip patch pocket.
- P. Plain trouser hems with Neoprene anti-wicking panels.
- Q. American Specification 3M triple trim.
- R. Hanger loop on back of the trousers.

### FABRIC & MOISTURE BARRIER OPTIONS

Pac Fire's standard BTEch garments are constructed with a lime coloured TITAN 1220 (i) outershell fabric.

Pac Fire's standard BTEch 2 includes a GORE® Fireblocker® moisture barrier (ii). BTEch 2 can be customised with a different moisture barrier on request. Lead times apply for custom specified moisture barriers.

The moisture barrier provides added protection from external water penetrating the garment and contacting the skin while effectively wicking away sweat keeping the wearer cool, protecting against steam related injuries and mitigating heat stress.



APPLICATION	Structural Firefighting
SIZES	Small, Medium, Large, X-Large, 2X-Large, 3X-Large, 4X-Large, 5X-Large,
CERTIFICATION	AS/NZS 4967:2009









## ECOFLEX WILDLAND 'CLASH' FIREFIGHTING ENSEMBLE

EcoFlex is a lightweight wildland ensemble designed specifically for the challenges faced by Australasian firefighters.

Ergonomically designed, EcoFlex provides the ultimate in fit and comfort for the maximum number of body types. EcoFlex has distinctive sports styling suitable for the hazardous roles associated with a wildland firefighter's work.

### JACKET

- A.** Collar and stowable throat tab shaped to provide optimal compatibility and protection with Pacific Helmet range.
- B.** Shoulder shaped with increased upper sleeve allows full rotational mobility in the shoulder and arm.
- C.** Shaped panel over the shoulder eliminates the shoulder seam and makes a smoother line with greater comfort.
- D.** Increased underarm gusset allows more manoeuvrability when reaching.
- E.** Underarm vents for increased air flow.
- F.** Nomex® cuff with neoprene anti-wicking barrier.
- G.** Hook and loop fastening wrist tabs with silicone coated para-aramid around the perimeter.

**H.** Moulded zip with hook and loop flap.

**I.** Hanging loop centrally located at the rear of the collar.

**J.** Two front breast pockets and two box bellowed pockets, all with drainage holes. Microphone loop and adjustable torch loop.

**K.** American Specification 3M perforated triple trim with Trim Saver.

**L.** Rank slide front centre of jacket.

**M.** Large logo / service branding area on the back of the jacket.

### TROUSERS

**N.** Two side slant pockets, two patch pockets on back hips secured with hook and loop and two bellow pockets secured with hook & loop.

**O.** Moulded zip with flap.

**P.** Belt loops.

**Q.** Hook and loop fastening ankle tabs with silicone coated para-aramid around the perimeter for increased durability.

**R.** American Specification 3M perforated triple trim with Trim Saver.

### FABRIC OPTIONS

Pac Fire's standard Ecoflex Wildland 'clash' garments are constructed with a lime coloured Karvin **(i)** outershell fabric.

Karvin is an inherently fire resistant technical fabric by Estambriil. This lightweight fabric has been specifically designed for wildland firefighting applications and provides optimum protection against radiant and convective heat as well as outstanding abrasion, colour fastness and strength.



Ecoflex Wildland is available in Karvin (pictured), Eco-Dry Shield and Vulkan. Lead times will apply to a change of fabric or customisations to the garment.

<b>APPLICATION</b>	Wildland Firefighting Technical Rescue
<b>SIZES</b>	28 Male   28 Female Made to measure sizes are available
<b>CERTIFICATION</b>	AS/NZS 4824:2006





## ECOFLEX WILDLAND 'EVO' FIREFIGHTING ENSEMBLE NEW

Ecoflex Wildland 'Evo' is a variation on the popular EcoFlex Wildland design.

Developed for wildland firefighting operations in Australia, the garment delivers paramount mobility and manoeuvrability to the wearer.

MSA Bristols inclusive sizing range that spans 28 male and 28 female sizes as standard with made to measure options available to ensure the perfect fit.

### JACKET

- A.** Collar and stowable throat tab shaped to provide optimal compatibility and protection with Pacific Helmet range.
- B.** Shoulder shaped with increased upper sleeve allows full rotational mobility in the shoulder and arm.
- C.** Shaped panel over the shoulder eliminates the shoulder seam and makes a smoother line with greater comfort.
- D.** Increased underarm gusset allows more manoeuvrability when reaching.
- E.** Underarm vents for increased air flow.
- F.** Elasticated cuffs with hook and loop fastening wrist tabs.
- G.** Brass zip with hook and loop flap. Pen pocket located inside flap.

**H.** Hanging loop centrally located at the rear of the collar.

**I.** Two front landscape pockets with hook & loop flap and drainage holes. One front box bellow pocket with hook & flap and drainage holes. One adjustable hook & loop, radio loop.

**J.** One large internal pocket with care label.

**K.** 3M™ SCOTCHLITE™ 5690 series, heat transfer triple trim.

**L.** Name / rank patch front right hand side, mid breast.

**M.** Large logo / service branding area on the back of the jacket.

### TROUSERS

**N.** Two side slant pockets, two patch pockets on back hips secured with hook and loop and two bellow pockets with drainage holes secured with hook & loop.

**O.** Brass zip fly with hook & loop flap secured by metal press stud.

**P.** Belt loops.

**Q.** Elasticated waist.

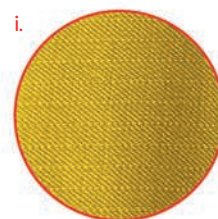
**R.** Hook and loop fastening ankle tabs with silicone coated para-aramid around the perimeter for increased durability.

**S.** 3M™ SCOTCHLITE™ 5690 series, heat transfer triple trim.

### FABRIC OPTIONS

Pac Fire's standard Ecoflex Wildland 'Evo' garments are constructed with a yellow Vulkan (i) outershell fabric.

Vulkan is an inherently fire resistant technical fabric by Santandarina. Vulkan's RipStop composition is a blend of Lenzing FR, Meta-Aramid and Para-Aramid that provides outstanding tensile strength, abrasion resistance and breathability equating to the perfect balance between comfort and protection. Vulkan is available in a range of different colours, a selection pictured on the garment above.



Ecoflex Wildland is available in Karvin, Eco-Dry Shield and Vulkan (pictured). Lead times will apply to a change of fabric or customisations to the garment.

<b>APPLICATION</b>	Wildland Firefighting Technical Rescue
<b>SIZES</b>	28 Male   28 Female Made to measure sizes are available
<b>CERTIFICATION</b>	AS/NZS 4824:2006





## RESCUEFLEX TECHNICAL RESCUE ENSEMBLE

Technical rescue situations present a unique set of challenges.

RescueFlex has been designed to be used in confined spaces, while remaining equally adaptable for other technical rescue situations such as road traffic accidents.

MSA Bristol RescueFlex incorporates two layers – a flame retardant outer layer and a waterproof membrane which includes a pathogen barrier.

### JACKET

- A.** Short style jacket with hem curved down at the back for additional overlap when bending and reaching.
- B.** Pleated back provides greater ease of movement.
- C.** Vented underarm panels and gussets provide full rotational mobility and maintain optimum airflow.
- D.** Two large landscape pockets with flaps featuring hook & loop closure.
- E.** Collar and tab provides optimal throat protection while maintaining compatibility with protective helmet.
- F.** Moulded front zip with hook and loop flap closure. Pen pocket inside flap.
- G.** Elbows padded with Kevlar® felt.

**H.** Knitted cuff with thumb loops. Opening adjustable with hook and loop fastening wrist tabs.

**I.** Silver 3M™ heat sealed reflective trim applied flat against the jacket.

**J.** Hanging loop centrally located at the rear of the collar.

**K.** Large logo / service branding area on the back of the jacket.

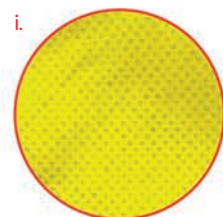
### TROUSERS

- L.** Elasticated waist.
- M.** Hook & loop fly with press stud fastener.
- N.** Adjustable “H” pattern braces with webbing slide.
- O.** Two large semi-bellow cargo pockets with pull tab, secured with hook & loop.
- P.** Ergonomic curved knee shaping for increased protection.
- Q.** Kevlar® felt pad with closed cell foam for additional protection and comfort when kneeling. Arashield coating for increased durability.
- R.** Concealed zip in leg with gusset.
- S.** Silver 3M™ heat sealed reflective trim applied flat against the trousers.
- T.** Hanger loop located on back of the waist.

### FABRIC OPTIONS

Pac Fire’s standard RescueFlex garments are constructed with a high visibility yellow GORE® PYRAD® (i) outershell fabric.

RescueFlex is available in a range of alternative fabrics. Lead times will apply to a change of fabric or customisations to the garment.



APPLICATION	Technical Rescue
SIZES	28 Male   28 Female Made to measure sizes are available
CERTIFICATION	EN ISO 11612 ISO 18639.3



## MSA BRISTOL NANOFLX PBI®

The NanoFlex particulate blocking flash hood provides the comfort and protection you would expect from MSA Bristol while striking the perfect balance between mitigating heat stress and filtering harmful particulates found on the fire ground.

MSA Bristol's revolutionary NanoFlex flash hoods have been proven to be 99.8% successful at filtering harmful particulates. Blended with PBI® fibres, NanoFlex PBI® hoods also deliver superior flashover protection to the wearer.

**FABRIC:** PBI® and Kevlar® fibres with viscose in a knitted fabric featuring Dupont NanoFlex fabric.

**DESIGN:** Separate head with sewn on back and front bib. Back of head ends at the nape of the neck for improved fit and comfort.

**CONSTRUCTION:** All head and bib seams are sewn with a flat lock stitch.

**THREAD:** 100% Nomex®

**LABEL:** Each hood is labelled with a FR label with all four edges sewn to the hood, identifying material contents, certification, lot#, date of manufacture, and care instructions.

**THL:** 438 (W/m<sup>2</sup>)



## MSA BRISTOL NANOFLX NOMEX

Recent studies into firefighter health and well-being suggest that the flash hood is the most penetrable piece of protective clothing worn by the firefighter, a particularly troubling finding considering the face and neck have been identified as areas of significant dermal exposure to potential carcinogens.

MSA Bristol's revolutionary NanoFlex flash hoods have been proven to be 99.8% successful at filtering harmful particulates. Blended with Nomex® fibres, NanoFlex Nomex hoods provide excellent protection against heat and flame.

**FABRIC:** Dupont's Nomex® and Kevlar® fibres with viscose in a knitted fabric featuring Nomex® NanoFlex.

**DESIGN:** Separate head with sewn on back and front bib. Back of head ends at the nape of the neck for improved fit and comfort.

**CONSTRUCTION:** All head and bib seams are sewn with a flat lock stitch.

**THREAD:** 100% Nomex®

**LABEL:** Each hood is labelled with a FR label with all four edges sewn to the hood, identifying material contents, certification, lot#, date of manufacture, and care instructions.

**THL:** 469 (W/m<sup>2</sup>)



## LIFE LINERS PBI® FLASH HOOD

The Life Liner PBI Flash Hood is constructed from a separate head piece and bib for a superior fit. The fabric is a unique combination of PBI® and Lenzing FR stitched together with 100% Nomex® thread.

**FABRIC:** 20% PBI® / 80% Lenzing FR

**DESIGN:** Separate head with sewn on back and front bib. Back of head ends at the nape of the neck for improved fit and comfort. Bib Design Two piece design with 15cm front with 20cm back bib design.

**CONSTRUCTION:** Two layer construction. All head and bib seams are sewn with a flat lock stitch. 3.8cm binding sewn to hem through folder with a three thread cover stitch to create a 1.25cm finished bound hem.

**THREAD:** 100% Nomex®

**LABEL:** Each hood is labelled with an FR label with all four edges sewn to the hood, identifying material contents, UL certification, lot#, date of manufacture, and care instructions.

**WEIGHT:** 185gsm

<b>PRODUCT CODE</b>	BRISTOLHOOD7	<b>PRODUCT CODE</b>	BRISTOLHOOD6	<b>PRODUCT CODE</b>	FHPFR9723ES
<b>APPLICATION</b>	Structural Firefighting	<b>APPLICATION</b>	Structural Firefighting	<b>APPLICATION</b>	Structural Firefighting
<b>SIZES</b>	Medium, Large	<b>SIZES</b>	Medium, Large	<b>SIZES</b>	One size
<b>COLOUR</b>	Tan	<b>COLOUR</b>	Navy Blue	<b>COLOUR</b>	Tan
<b>CERTIFICATION</b>	EN 13911:2017	<b>CERTIFICATION</b>	EN 13911:2017	<b>CERTIFICATION</b>	NFPA 1971:2018 UL





**HOT SHIELD**

**HOT SHIELD**



## LIFE LINERS NOMEX® FLASH HOOD

Australian firefighters work in challenging conditions and need clothing that provides protection and comfort so they can focus on saving lives. Life Liners flash hoods are designed with the wearer in mind delivering the protection they need as well as the comfort they're searching for.

**FABRIC:** 20% Nomex® / 80% Lenzing FR

**DESIGN:** Separate head with sewn on back and front bib. Back of head ends at the nape of the neck for improved fit and comfort. Bib is a two piece design with 15cm front with 20cm back bib design.

**CONSTRUCTION:** Two layer construction. All head and bib seams are sewn with a flat lock stitch. 3.8cm binding sewn to hem through folder with a three thread cover stitch to create a 1.25cm finished bound hem.

**THREAD:** 100% Nomex®

**LABEL:** Each hood is labelled with an FR label with all four edges sewn to the hood, identifying material contents, UL certification, lot#, date of manufacture, and care instructions.

**WEIGHT:** 199gsm

## HOT SHIELD FACE MASK

The Hot Shield Mask is a machine washable, multi layer, face protection mask designed for Wildland Firefighters. Hot Shield protects the face and neck against burns while reducing inhalation of smoke and ash.

**FABRIC:** CarbonX®

**DESIGN:** Multiple layers of CarbonX® maintain crucial airspace in front of the mouth and nose.

**REFLECTIVE:** 3M™ SCOTCHLITE™ reflective trim pieces sewn to left and right side of mask.

**THREAD:** 100% Nomex®

**PACKAGE:** 1 Hot Shield Face Mask, 2 disposable cup style respiration masks with plastic valve.

**WEIGHT:** 112 grams

**CUP STYLE  
P2 MASK**



## HOT SHIELD ULTIMATE BANDANNA FACE COVERING

Reduce the risk of burn injuries caused by radiant heat or direct flame to the facial and neck area. Hot shield Ultimate Bandanna is a machine washable face covering made from fire resistant CarbonX® fabric designed to protect a firefighters most vulnerable areas during wildland fire operations.

**FABRIC:** CarbonX®

**DESIGN:** CarbonX® cinch cord with a sliding nylon spring lock creates an air pocket for easier breathing and comfort. Adjustable 'nose pinch' made from aluminium sandwiched between layers of CarbonX® fabric. Hook and loop closures at the back of the neck.

**REFLECTIVE:** 3M™ SCOTCHLITE™ reflective trim pieces sewn to left and right side of mask.

**THREAD:** 100% Nomex®

<b>PRODUCT CODE</b>	FH33	<b>PRODUCT CODE</b>	RHS-2+	<b>PRODUCT CODE</b>	RUBV2
<b>APPLICATION</b>	Structural Firefighting	<b>APPLICATION</b>	Wildland Firefighting	<b>APPLICATION</b>	Wildland Firefighting
<b>SIZES</b>	One size	<b>SIZES</b>	One size	<b>SIZES</b>	One size
<b>COLOUR</b>	Tan	<b>COLOUR</b>	Black	<b>COLOUR</b>	Black
<b>CERTIFICATION</b>	NFPA 1971:2018 UL				



CZ5H552

## KAPPLER ZYTRON®

Zytron® garments deliver unsurpassed protection, an easy to use numbering system, and distinctly coloured garments for clear identification. Zytron. One look and you'll see we've got you covered.

**MATERIAL:** Zytron® 100XP, Zytron® 200, Zytron® 300, Zytron® 400, Zytron® 500.

**CONFIGURATION:** Coverall ❶ ❷, Bib overall ❶, Chaps ❷, Gown ❶, Jacket ❶, Overhood ❸, Splash Total Encapsulating Suit ❶ and Vapour Total Encapsulating Suit ❶ ❸. Multiple configurations are available within each garment category. Contact Pac Fire to discuss application and chemical holdout requirements.



CF5H582-91

## KAPPLER FRONTLINE®

Multiple protection levels in single skin apparel.

Those who work in hazmat response or petrochemical environments know that protection against chemical flash-fires is a must. For this reason the Frontline family of fabrics was developed by Kappler, with a combination of broad chemical holdout plus flash-fire protection.

**MATERIAL:** Frontline® 300, Frontline® 500.

**CONFIGURATION:** Frontline® 300 Coverall with attached hood CF3H4, Multi-Piece suit CF3H6, Bib overall CF3H660, Jacket CF3H67 and overhood CF3H750. Frontline® 500 Vapour Total Encapsulating Suit, available with front F5H582-91 or rear entry F5H583-91.



CD5H458-94

## KAPPLER DURACHEM®

DuraChem offers incident responders a tactical garment alternative to traditional hazmat suits. Designed for CBRN and general Hazmat protection, this non-encapsulating coverall features a unique rear entry configuration that eliminates cross-contamination concerns when doffing the garment.

Designed as a 'multi-use, single-exposure' garment.

**MATERIAL:** DuraChem® 500 (khaki - pictured, or navy).

**CONFIGURATION:** Coverall with attached hood with Sure-Fit® respirator face piece seal. Available in front entry.

CD5H457-94 or rear entry CD5H458-94.

**AQUASEAL® GAS-TIGHT ZIPPER.**

**DOUBLE STORM FLAPS**, with fire resistant hook & loop closure.

**25 MIL BUTYL GLOVES**, permanently attached to the garment.

**KNITTED KEVLAR® OVERGLOVES.** Removable.

**SOCK BOOTIES.** Attached to garment. Includes splash guard. Fastened with hook and loop at the ankles.

**PRODUCT CODE** CZ1 (Zytron® 100XP), CZ2 (Zytron® 200), CZ3 (Zytron® 300), CZ4 (Zytron® 400), CZ5 (Zytron® 500).

**APPLICATION** Chemical Protection  
General Hazmat

**SIZES** ❶ Small/Medium, Large/X-Large, 2X-Large/3X-Large, 4X-Large  
❷ 2X-Large/3X-Large  
❸ One size fits most

**CERTIFICATION** ❶ NFPA1991: 2016 options available  
❷ NFPA1994:2018 Class 2 style available

**PRODUCT CODE** CF3H4 ❶, CF3H6 ❶, CF3H660 ❶, CF3H67 ❶, CF3H750 ❷, CF5H582-91 ❸, CF5H583-91 ❸

**APPLICATION** Hazmat Response  
Chemical Flash Fire

**SIZES** ❶ Small/Medium, Large/X-Large, 2X-Large/3X-Large, 4X-Large  
❷ One size fits most  
❸ Small/Medium, Large/X-Large, 2X-Large/3X-Large, 4X-Large

**CERTIFICATION** ❸ NFPA1991: 2016

**PRODUCT CODE** CD5H458-94, CD5H457-94

**APPLICATION** CBRN  
General Hazmat

**SIZES** Small/Medium, Large/X-Large, 2X-Large/3X-Large, 4X-Large

**CERTIFICATION** NFPA1994: 2018 Class 1 & 2



# PROTECTIVE CLOTHING



## KAPPLER LANTEX®

Lantex® garments deliver breathable, NFPA1999 protection for Fentanyl response. The tactical design is ideal for law enforcement personnel, offering additional blood and viral protection in an economical, single use garment.

Kappler Lantex® is a rear entry garment, eliminating cross-contamination concerns when doffing the garment.

**MATERIAL:** Lantex® 100 (black).

**CONFIGURATION:** Certified emergency medical garment which includes an attached hood with Sure-Fit® respirator face piece seal. Available in rear entry.

**ZIP CLOSURE.**

**DOUBLE STORM FLAPS,** with hook & loop closure.

**ELASTICISED WRISTS,** with thumb loops.

**SOCK BOOTIES.** Attached to garment. Includes splash guards.



## KAPPLER PROVENT®

From basic dirt to paint spray to blood and viral hazards, the ProVent protective apparel range offers a fabric and garment perfectly suited to the job. They all offer the benefit of microporous fabric technology – another innovation that Kappler introduced which proves that protection and breathability are not mutually exclusive.

ProVent® locks in biohazard and general hazard protection with the microporous advantage.

**MATERIAL:** ProVent® (white). ProVent® Plus (white or blue)

**CONFIGURATION:** ProVent® Non-Sterile Gown **PVS1**. ProVent® BC Coverall, or Coverall with attached hood **PVS4**. ProVent® Plus Coverall, or Coverall with attached hood **PPH4**, Lab Coat **PPS2**, Gown **PPN1** and NFPA1999:2018 medical Coverall with hood **PPH439-99**.



## KAPPLER TRAINING SUIT

Kappler training suits wear just like our regular hazard protection apparel, giving responders the same experience as wearing a standard garment, but without the full holdout protection needed for actual hazard exposure.

Designed to be used and laundered multiple times.

**MATERIAL:** Zyttron® 500 (orange or charcoal) or PVC (yellow - pictured).

**CONFIGURATION:** Zyttron® 500 garments available in front entry **CZ555555** or rear entry **CZ555556**. PVC garments available front entry **CPVS555** only.

**LARGE VIEW FACE SHIELD,** made from PVC.

**EXPANDED BACK:** Comfortably accommodates SCBA tanks.

**EXHAUST PORT.**

**ZIP CLOSURE.** 120cm long.

**STORM FLAP,** with hook & loop closure.

**SEWN SEAMS.**

**PVC GLOVES.** Sewn onto garment.

**SOCK BOOTS,** attached to garment with boot flaps.

**PRODUCT CODE** CL1H459-99

**APPLICATION** Law Enforcement  
Fentanyl Response

**SIZES** Small/Medium, Large/X-Large, 2X-Large/3X-Large, 4X-Large

**CERTIFICATION** NFPA1999  
ASTM F1671

**PRODUCT CODE** CPVS1 ①, CPVS4 ②, CPPH4 ②, CPPS2 ②,  
CPN1 ②, CPPH439-99 ② ④

**APPLICATION** General Purpose  
Medical

**SIZES** ① Large/X-Large, 2X-Large  
② Small/Medium, Large/X-Large,  
2X-Large/3X-Large, 4X-Large

**CERTIFICATION** ④ NFPA1999:2018

**PRODUCT CODE** CZ555555 ①, CZ555556 ①, CPVS555 ②

**APPLICATION** Training

**SIZES** ① X-Small, Small/Medium, Large/X-Large,  
2X-Large/3X-Large, 4X-Large, 5X-Large  
② X-Small, Small/Medium, Large/X-Large,  
2X-Large/3X-Large, 4X-Large



## KAPPLER CHEMTAPE

Kappler ChemTape is a specially designed and tested adhesive tape for added barrier protection against hazardous chemicals at the seams, zippers and other openings found on chemical protective clothing.

PRODUCT CODE	CS99402YE
DIMENSIONS	48mm wide x 50m long



## CHEMICAL BOOTS

Tingley Chemical Protective HazProof boots. Oversized design to accommodate Chemical Suit sock boot. Tapered top opens wide for easy donning. Black closure tabs easy to use and replace.

PRODUCT CODE	CAROB0
SIZES	(US SIZING) 7, 8, 9, 10, 11, 12, 13



## REPLACEMENT BUTYL GLOVES

Guardian brand butyl gloves, model CP-25. Butyl provides the highest permeation resistance to gases and water vapours or any protective material used to make gloves. Provides excellent protection against alcohols, amines and amides, glycol ethers, nitro-compounds and aldehydes.

PRODUCT CODE	CAG0GB
SIZES	XS, S, M, L, XL



## RESPONDER ID KITS

Safely manage a response situation where worker identities are obscured by protective apparel. Includes large ID numbers made out of yellow, self adhesive Kappler ChemTape. Includes digits 0-9.



PRODUCT CODE	CS99415YE
DIMENSIONS	15.5 x 27 x 0.02cm / 0.1kgs



## ANTI-FOG SPRAY

Kappler Anti-Fog Solution for use with Chemical Suit face shields to alleviate fogging.



PRODUCT CODE	CAKMOC
SIZE	60ml (2 fl oz)



## PRESSURE TEST KIT

Kappler's automated Digital Pressure Test Kit improves the efficiency and accuracy of gas-tight garment tests for both ASTM and CE methods. All fittings and hoses are included.

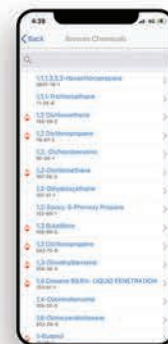
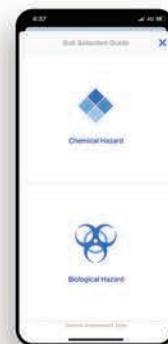
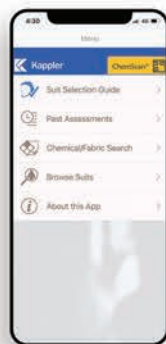


PRODUCT CODE	CA00RS
DIMENSIONS	45 x 35 x 17.5cm / 12.24 kg



## CHEMSCAN

Each Kappler garment is supplied with a Chemsan QR code label. Scan the QR code for detailed information about the garment and chemical holdout provided by the fabric.



## HAZMATCH

HazMatch® helps you make apparel choices with confidence. HazMatch is Kappler's online selection guide that lets you search by chemical or by fabric. Just a few clicks and you can easily find a garment that's a safe match for your situation.





# GLOVES



## BRISTOL COMPOSITE STRUCTURAL FIREFIGHTING GLOVES

MSA Bristols composite structural firefighting gloves combine Nomex® fabric with hard wearing cow hide leather to deliver the wearer exceptional, 'best of both worlds' protection.

The European version of the composite gloves were awarded to the UK Collaborative PPE Framework project and are in use within some of the largest fire services throughout Europe.

**BACK OF THE HAND:** Beige Nomex®.

**PALM OF THE HAND:** Beige, smooth, hard wearing cowhide leather.

**MOISTURE BARRIER:** GORE-TEX® CROSSTECH®

**LINING:** Kevlar® / fiberglass.

**CUFF:** 80mm Black Nomex® knitted cuff with and additional cowhide leather pulse protector with hanger hole.

**KNUCKLE PROTECTOR:** Kevlar®/Nomex® flexible heat absorber.

**PULSE PROTECTOR:** Palm material extends down the 30mm past the cuff, includes hanger hole. Cowhide leather tab facilitates donning and provides a storage solution.

**SHAPE:** 3D articulated, for optimum dexterity and comfort.



## TITAN PBI® STRUCTURAL FIREFIGHTING GLOVES

The Titan PBI® Structural Firefighting Gloves represent years of research that balance paramount protection and optimum dexterity.

Developed with the wearer in mind, the MSA Bristol glove offers a unique, anatomical fit and broad sizing range. These gloves are tough! The Titan PBI® gloves boast an exceptional lifespan due to their resilience when undergoing regular cleans.

**BACK OF THE HAND:** Titan PBI® (1260).

**PALM OF THE HAND:** Double face knit of Kevlar® with Silicon Carbon Coating - extended down onto the cuff.

**MOISTURE BARRIER:** GORE-TEX® CROSSTECH®.

**LINING:** Senso lining system. Strong & permanent link between Kevlar® lining, CROSSTECH® moisture barrier and outershell.

**CUFF:** 80mm Nomex® knit.

**KNUCKLE PROTECTOR:** Kevlar® / Nomex® flexible heat absorber.

**REFLECTORS:** Silver reflective piping.

**SHAPE:** 3D articulated, for optimum dexterity and comfort.

**HIGH WASH COUNT.**



## FIREWALL 3 STRUCTURAL FIREFIGHTING GLOVES

The Firewall 3 glove provides optimum protection without diminishing comfort and dexterity. These gloves have been designed to work harmoniously with a range of structural ensembles.

**BACK OF THE HAND:** Yellow cow grain leather

**PALM OF THE HAND:** Yellow cow grain leather - extended down onto the cuff

**MOISTURE BARRIER:** Porelle® (100% PTFE)

**LINING:** Non-woven Kevlar® fabric

**CUFF:** 100mm elasticated Kevlar® knit

**REFLECTORS:** Silver 3M™ reflective trim

**PULSE PROTECTOR:** Palm material extends down the 80mm onto the cuff.

<b>PRODUCT CODE</b>	GBRISTOL56A <b>NEW</b>	<b>PRODUCT CODE</b>	GTITAN49A	<b>PRODUCT CODE</b>	GFWN3
<b>APPLICATION</b>	Structural Firefighting	<b>APPLICATION</b>	Structural Firefighting	<b>APPLICATION</b>	Structural Firefighting
<b>SIZES</b>	5 (3XS), 6 (2XS), 7 (XS), 8 (S), 9 (M), 10 (L), 11 (XL), 12 (2XL), 13 (3XL), 14 (4XL)	<b>SIZES</b>	5 (3XS), 6 (2XS), 7 (XS), 8 (S), 9 (M), 10 (L), 11 (XL), 12 (2XL), 13 (3XL)	<b>SIZES</b>	XS, S, M, L, XL, 2XL
<b>CERTIFICATION</b>	AS/NZS 2161.6:2014	<b>CERTIFICATION</b>	AS/NZS 2161.6:2014	<b>CERTIFICATION</b>	AS/NZS 2161.6:2014



eska®



## SUPER MARS PLUS STRUCTURAL FIREFIGHTING GLOVES

Super Mars Plus are a three layer structural firefighting glove comprising of thermal lining, moisture barrier and outershell. They have been designed to provide an ergonomic fit and optimum protection in Australasian structural firefighting conditions.

**BACK OF THE HAND:** Fire Blocker leather.

**PALM OF THE HAND:** Fire Blocker leather with sections of Special 100% Kevlar® with silicon/carbon coating.

**MOISTURE BARRIER:** GORE-TEX® CROSSTECH®

**LINING:** Special 100% Kevlar® with silver threads

**CUFF:** 110mm Kevlar® Knit. Kevlar® with silicon/carbon coating extends down the wrist and provides additional cut resistance - 25mm wide.

**KNUCKLE PROTECTOR:** Fire retardant carbon fibre.

**REFLECTORS:** Silver 3M™ SCOTCHLITE™ reflective trim.

**PULSE PROTECTOR:** Kevlar® with silicon/carbon coating extends down the length of the cuff in a 35mm wide strip.

MSA BRISTOL  
The Safety Company



## MSA BRISTOL WILDLAND FIREFIGHTING GLOVES

The ideal combination of features make MSA Bristol's wildland firefighting gloves the perfect glove for bushfire and technical rescue applications.

**BACK OF THE HAND:** High visibility, coated cow split leather.

**PALM OF THE HAND:** Cow split leather.

**MOISTURE BARRIER:** Polyurethane membrane.

**LINING:** Kevlar® with Polyethylene and fibreglass.

**CUFF:** 90mm black, knitted Kevlar®.

**KNUCKLE PROTECTOR:** Padded, coated cow split leather.

**PULSE PROTECTOR:** Palm material extends down the 30mm past the cuff, includes hanger hole. Cow split leather tab facilitates donning and provides a storage solution.

PACFIRE



## FIREWALKER GEN2 WILDLAND FIREFIGHTING & RESCUE GLOVES

Firewalker GEN2 gloves provide sound wearer comfort and protection at a competitive price. Available in a wide range of sizes and in both lined and unlined styles.

**BACK OF THE HAND:** 1.2mm leather.

**PALM OF THE HAND:** 1.2mm leather - extended down onto the cuff.

**LINING:** Wool (optional).

**CUFF:** 100mm Kevlar® / Nomex® Knit. Glove material extends down onto the cuff to provide additional cut resistance.

**STITCHING:** Kevlar®.

**REFLECTORS:** 25mm wide silver reflective trim across the entire back of the hand that loops around onto the palm area.

**PULSE PROTECTOR:** Palm material extends down the 80mm onto the cuff.

<b>PRODUCT CODE</b>	G8038W	<b>PRODUCT CODE</b>	GBRISTOL60 <b>NEW</b>	<b>PRODUCT CODE</b>	GFWWCW (Wool Lined) GFWWCU (Unlined)
<b>APPLICATION</b>	Structural Firefighting	<b>APPLICATION</b>	Wildland Firefighting Technical Rescue	<b>APPLICATION</b>	Wildland Firefighting Technical Rescue
<b>SIZES</b>	5 (3XS), 6 (2XS), 7 (XS), 8 (S), 9 (M), 10 (L), 11 (XL), 12 (2XL)	<b>SIZES</b>	5 (3XS), 6 (2XS), 7 (XS), 8 (S), 9 (M), 10 (L), 11 (XL), 12 (2XL), 13 (3XL), 14 (4XL)	<b>SIZES</b>	2XS, XS, S, M, L, XL, 2XL
<b>CERTIFICATION</b>	AS/NZS 2161.6:2014	<b>CERTIFICATION</b>	AS/NZS 2161.6:2003 (Type 1)	<b>CERTIFICATION</b>	AS/NZS 2161.6:2003 (Type 1)



## INTERCEPT VEHICLE EXTRICATION GLOVES

Multi-layer construction for increased protection without sacrificing maximum dexterity, flexibility, and grip.

'Interceptor' gloves have been designed for the unique challenges encountered in road crash rescue situations involving vehicle extrication.

**BACK OF THE HAND:** High visibility Polyester with synthetic leather fingertips.

**PALM OF THE HAND:** Synthetic Leather with silicone and neoprene padding.

**LINING:** Aramid fabrics with glass and steel fibres line the palm of the hand.

**CUFF:** Polyester.

**KNUCKLE PROTECTOR:** Synthetic leather and neoprene over the knuckles on the hand. A blend of Aramid, nylon and polyurethane fabrics over the knuckles in the fingers and thumb.

**REFLECTORS:** Silver reflective piping on either side of the knuckle protector, back of the hand.

## ATHENA TECHNICAL RESCUE GLOVES

The Athena EX-1 RSQ Glove by Vimpex features high quality materials and a sleek design that maximises dexterity during rescue applications.

Manufactured using flame retardant Nomex<sup>®</sup> fabric and a level 5 cut resistant Kevlar<sup>®</sup> liner, the EX-1 RSQ offers rescue workers dexterous and safe hand protection for all non-fire incidents.

**BACK OF THE HAND:** High visibility, flame resistant orange Nomex<sup>®</sup> fabric.

**PALM OF THE HAND:** Leather with additional padding under the palm.

**LINING:** Kevlar<sup>®</sup> knitted, level 5 cut resistant liner.

**CUFF:** 50mm neoprene with hook & loop tab fastener.

**KNUCKLE PROTECTOR:** Silicone coated Kevlar<sup>®</sup>.

**PULSE PROTECTOR:** Extends 35mm past the cuff to form a loop that facilitates fast donning and provides a storage solution.

## X-RESCUE TECHNICAL RESCUE GLOVES

X-Rescue gloves hold an anatomical shape for premium dexterity and comfort. They feature additional padding under the palm and carbon knuckle protectors for optimum performance in a multitude in rescue situations.

**BACK OF THE HAND:** Amara leather and Nylon.

**PALM OF THE HAND:** Elastan and PA reinforced with Kevlar<sup>®</sup>.

**LINING:** Kevlar<sup>®</sup> and Fibreglass for superior cut resistant.

**CUFF:** 50mm Nylon with elastic shirring.

**KNUCKLE PROTECTOR:** Reinforced carbon fibre.

**REFLECTORS:** Silver reflective piping.

<b>PRODUCT CODE</b>	GINTVX <b>NEW</b>	<b>PRODUCT CODE</b>	GEX-1 RSQ <b>NEW</b>	<b>PRODUCT CODE</b>	GXRESCUE
<b>APPLICATION</b>	Road Crash Rescue Technical Rescue	<b>APPLICATION</b>	Technical Rescue	<b>APPLICATION</b>	Technical Rescue
<b>SIZES</b>	2XS, XS, S, M, L, XL, 2XL	<b>SIZES</b>	6 (2XS), 7 (XS), 8 (S), 9 (M), 10 (L), 11 (XL), 12 (2XL), 13 (3XL)	<b>SIZES</b>	5 (3XS), 6 (2XS), 7 (XS), 8 (S), 9 (M), 10 (L), 11 (XL), 12 (2XL)
<b>CERTIFICATION</b>	EN388: 2016	<b>CERTIFICATION</b>	EN388: 2016	<b>CERTIFICATION</b>	EN388: 2016 EN407: 2004





# FOOTWEAR



## FIRE GUARD FIREFIGHTING FOOTWEAR NEW

For over 35 years Jolly Safety Footwear has been a leading essential supplier of professional firefighting footwear throughout Europe. Recently, Jolly was selected as the preferred supplier of Firefighting & Rescue Footwear to the UK Collaborative Framework which is accessible to all Fire and Rescue Services across the United Kingdom.

A focus on introducing innovative materials, superior safety and premium comfort has made Jolly a market leader in the field of protective footwear for firefighters and a reference point for all professionals.

Fire Guard structural firefighting footwear provides the wearer with the perfect fit without compromising on protection.

**A. UPPER:** 2.0-2.2mm full grain leather, black, water repellent treated, and microfibre inserts.

**B. LINING:** GORE-TEX® performance comfort footwear. Waterproof, breathable and moderately insulated for use in a wide range of temperatures (not pictured).

**C. TOECAP:** lightweight, asymmetric aluminium. Resists impacts up to 200 joules (not pictured).

**D. HEEL CAP:** 1.8mm resinated synthetic bonded fabric, thermally mouldable, glued to upper (not pictured).

**E. SOLE:** nitrile rubber, cemented with red wear level indicators. Provides excellent grip even on uneven ground. Heat resistant at 300°C, antistatic, oil and petrol resistant and high wear-resistant.

**F. FOOTBED:** moisture transmitting felt, anatomically shaped. Heel incorporates EVA foam insert preserving foot anatomy, providing a high level of comfort and increasing impact absorption (not pictured).

**G. THREAD:** yellow Kevlar® Filament – inherently flame-retardant.

**H. LACES:** black, round Nomex® laces – inherently flame-retardant. Treated to be water repellent.

**I. REFLECTORS:** yellow, reflex SCOTCHLITE™ 3M™ material.

**J. ZIP CLOSURE:** Jolly rapid off-system with total opening zipper.

**K. ANKLE PROTECTION SYSTEM** consisting of heat moulded material combined with a special 3D memory foam padding resulting in high levels of shock absorption.

**L. FRONT AND REAR FLEXORS** provide improved flexibility and comfort.

**M. FRONT PULL ON LOOP**

**N. REAR PULL-ON LOOP** made from reinforced leather to facilitate fast donning.

**O. ABRASION RESISTANT RUBBER PROTECTIONS** fitted to the front and rear of each boot.

**P. SIDE ANTI-PERFORATION PANELS** made from a multilayer fabric, with a perforation resistance of 1100 Newtons (not pictured).



DESIGNED IN ITALY

PRODUCT CODE	FWJ 9381GA
APPLICATION	Structural Firefighting
STYLE	Zip Front
SIZES	EU SIZING (UK SIZING) 36 (3.5), 37 (4), 38 (5), 39 (6), 40 (6.5), 41 (7), 42 (8), 43 (9), 44 (9.5), 45 (10), 46 (11), 47 (12), 48 (12.5), 49 (13)
CERTIFICATION	AS/NZS 4821:2014 EN 15090:2012





## FIRE PROFI FIREFIGHTING FOOTWEAR

Fire Profi is pull on style Structural Firefighting footwear which emphasises wearer comfort without compromising protection.

The boots have been designed to fit the foot perfectly, while the features focus on delivering an unimpeded range of movement.

**UPPER:** 2.0-2.2mm full grain leather.  
**LINING:** GORE-TEX® performance comfort footwear.  
**TOECAP:** Aluminium. Resists impacts up to 200 joules.  
**HEEL CAP:** 1.8mm resinated synthetic bonded fabric.  
**SOLE:** nitrile rubber, cemented with red wear level indicators.  
**FOOTBED:** moisture transmitting felt, anatomically shaped.  
 Heel incorporates EVA foam insert.  
**THREAD:** yellow Kevlar® filament.  
**REFLECTORS:** yellow, reflex SCOTCHLITE™  
**ANKLE PROTECTION SYSTEM** consisting of heat moulded material combined with a special 3D memory foam padding.  
**FRONT AND REAR FLEXORS.**  
**REINFORCED SIDE HANDLES** 25mm wide.  
**ELASTIC INSERTS.**  
**ABRASION RESISTANT RUBBER PROTECTIONS.**  
**SIDE ANTI-PERFORATION PANELS.**  
**WRAP BAND SYSTEM (WBS)** secures the top arch for increased foot stability.



## SUPERLEGGERA FIREFIGHTING & RESCUE BOOTS

Superleggera has been designed for a wide range of applications.

It's AS/NZS 4821:2014 certification makes Superleggera suitable for Structural Firefighting. The compact and lightweight design means Superleggera is a comfortable option when in Wildland Firefighting and Rescue situations.

**UPPER:** 1.7 - 1.9mm full grain leather.  
**LINING:** GORE-TEX® CROSSTECH®.  
**TOECAP:** Aluminium. Resists impacts up to 200 joules.  
**HEEL CAP:** 1.8mm resinated synthetic bonded fabric.  
**SOLE:** nitrile rubber, cemented with red wear level indicators.  
**FOOTBED:** average 8.0mm thick composite insole made by a multilayer construction using special anti-perforation material.  
**THREAD:** black Kevlar® filament.  
**LACES:** black, round Nomex® laces.  
**REFLECTORS:** yellow, reflex SCOTCHLITE™.  
**ANKLE PROTECTION SYSTEM** consisting of heat moulded material combined with a special 3D memory foam padding.  
**FRONT AND REAR FLEXORS.**  
**FRONT AND REAR PULL ON LOOPS.**  
**ABRASION RESISTANT RUBBER PROTECTIONS.**  
**SIDE ANTI-PERFORATION PANELS.**



## SKELLERUP EXTREME FIREFIGHTING FOOTWEAR

Type 3 structural fire fighting boots are designed to provide firefighters with the very highest level of available protection.

The Skellerup Firefighter Extreme takes this protection even further with additional levels of chemical resistance to ASTM F739 and linings woven from a combination of Nomex® and Kevlar® for ultimate comfort and protection.

**UPPER:** Black vulcanised rubber. Flame, heat & chemical resistant.  
**LINING:** Woven Nomex® & Kevlar®.  
**TOECAP:** Steel. Resists impacts up to 200 joules.  
**SOLE:** Black vulcanised rubber. Flame, heat & chemical resistant. Commando pattern with ladder grips.  
**FOOTBED:** Multi-fit comfort footbed system.  
**CUT OUT SIDE HANDLES.**

<b>PRODUCT CODE</b>	FWJ 9305GA <b>NEW</b>	<b>PRODUCT CODE</b>	FWJ 9300GA <b>NEW</b>	<b>PRODUCT CODE</b>	FWFSF8
<b>APPLICATION</b>	Structural Firefighting	<b>APPLICATION</b>	Structural Firefighting Wildland Firefighting Technical Rescue	<b>APPLICATION</b>	Structural Firefighting
<b>STYLE</b>	Pull On	<b>STYLE</b>	Zip Front	<b>STYLE</b>	Pull On
<b>SIZES</b>	EU SIZING (UK SIZING) 36 (3.5), 37 (4), 38 (5), 39 (6), 40 (6.5), 41 (7), 42 (8), 43 (9), 44 (9.5), 45 (10), 46 (11), 47 (12), 48 (12.5), 49 (13)	<b>SIZES</b>	EU SIZING (UK SIZING) 36 (3.5), 37 (4), 38 (5), 39 (6), 40 (6.5), 41 (7), 42 (8), 43 (9), 44 (9.5), 45 (10), 46 (11), 47 (12), 48 (12.5), 49 (13)	<b>SIZES</b>	UK SIZING 3, 4, 5, 6, 7, 8, 9, 10, 11, 12, 13, 14, 15
<b>CERTIFICATION</b>	AS/NZS 4821:2014 EN 15090:2012	<b>CERTIFICATION</b>	AS/NZS 4821:2014 EN 15090:2012 ISO 20345:2011	<b>CERTIFICATION</b>	AS/NZS 4821:2014 EN 15090:2012 ISO 20345:2011 AS 2210.3:2019



## HADES FIREFIGHTING FOOTWEAR

Built to provide premium protection, Hades boots are made from 2.5-2.7mm fire resistant cow hide leather.

Hades are manufactured to include additional safety features such as: an aluminium toe cap, a steel midsole with cut resistant strip, shock absorbing dual density rubber soles and more.

**UPPER:** 2.5-2.7mm full grain FR Hydrophobic cow hide.  
**LINING:** GORE-TEX® performance comfort footwear.  
**TOECAP:** Aluminium. Resists impacts up to 200 joules.  
**SOLE:** Injected, dual density nitrile rubber.  
**FOOTBED:** Ortholite® Air System open-cell foam.  
**THREAD:** Fire retardant filament.  
**LACES:** Black, flat, flame retardant laces.  
**REFLECTORS:** High visibility trim.  
**FRONT FLEXORS.**  
**REAR PULL ON LOOP.**



## POSEIDON FIREFIGHTING FOOTWEAR

Poseidon firefighting footwear is manufactured from premium full grain leather with a GORE-TEX® waterproof, breathable lining.

The dual density rubber injected sole provides slip resistance as well as premium shock absorption.

**UPPER:** 2.5-2.7mm full grain FR Hydrophobic cow hide.  
**LINING:** GORE-TEX® performance comfort footwear.  
**TOECAP:** Steel. Resists impacts up to 200 joules.  
**SOLE:** Injected, dual density nitrile rubber.  
**FOOTBED:** Ortholite® Air System open-cell foam.  
**THREAD:** Fire retardant filament.  
**LACES:** Black, flat, flame retardant laces.  
**REFLECTORS:** High visibility trim.  
**FRONT AND REAR FLEXORS.**  
**REINFORCED SIDE HANDLES.**



## APOLLO FIREFIGHTING & RESCUE FOOTWEAR

Apollo is a lightweight and durable boot made specifically for wildland firefighting and rescue work.

The combination of fire grade cow hide and Tencate® provides the wearer a high level of protection while the air injected midsole delivers cushion comfort.

**UPPER:** 2.5-2.7mm full grain FR Hydrophobic cow hide.  
**LINING:** Abrasion resistant moisture wicking.  
**TOECAP:** Aluminium. Resists impacts up to 200 joules.  
**SOLE:** Injected, dual density nitrile rubber.  
**FOOTBED:** Ortholite® Air System open-cell foam.  
**THREAD:** Fire retardant filament.  
**LACES:** Black, flat, flame retardant laces.  
**REFLECTORS:** High visibility silver trim.  
**REAR PULL ON LOOP.**

<b>PRODUCT CODE</b>	FWF2AR1354	<b>PRODUCT CODE</b>	FWFF300GTXIN	<b>PRODUCT CODE</b>	FWF2AR1352
<b>APPLICATION</b>	Structural Firefighting	<b>APPLICATION</b>	Structural Firefighting	<b>APPLICATION</b>	Structural Firefighting Wildland Firefighting Technical Rescue
<b>STYLE</b>	Zip Front	<b>STYLE</b>	Pull On	<b>STYLE</b>	Lace Up
<b>SIZES</b>	UK SIZING 3, 3.5, 4, 4.5, 5, 5.5, 6, 6.5, 7, 7.5, 8, 8.5, 9, 9.5, 10, 10.5, 11, 11.5, 12, 12.5, 13, 13.5, 14, 14.5, 15	<b>SIZES</b>	UK SIZING 3, 3.5, 4, 4.5, 5, 5.5, 6, 6.5, 7, 7.5, 8, 8.5, 9, 9.5, 10, 10.5, 11, 11.5, 12, 12.5, 13, 13.5, 14, 14.5, 15	<b>SIZES</b>	UK SIZING 3, 3.5, 4, 4.5, 5, 5.5, 6, 6.5, 7, 7.5, 8, 8.5, 9, 9.5, 10, 10.5, 11, 11.5, 12, 12.5, 13, 13.5, 14, 14.5, 15
<b>CERTIFICATION</b>	AS/NZS 4821:2014 EN 15090:2012 ISO 20345:2011	<b>CERTIFICATION</b>	AS/NZS 4821:2014 EN 15090:2012 ISO 20345:2011	<b>CERTIFICATION</b>	AS/NZS 4821:2014 EN 15090:2012 ISO 20345:2011





# LIGHTING & TORCHES

ADALIT



## LED TORCH L5 POWER

**BURN:** up to 30 hours.  
**LIGHT OUTPUT:** 150lm.  
**BEAM DISTANCE:** 96m.  
**CONTROLS:** Soft touch push button tail switch, switches light between ON with beacon / ON torch only / OFF.  
**POWERED BY:** 4 x AAA Alkaline batteries.  
**BODY:** Impact resistant and anti-static thermoplastic resin.  
**POSITION LOCATION BEACON:** Flashing red LED in tail to assist in locating team members in low visibility.  
**PHOTOLUMINESCENT BEZEL:** Increases visibility in low light.  
**HELMET TORCH:** Can be mounted on Pacific branded helmets with an Easi On/Off torch base using the A107118 Helmet Clip.  
**MADE IN SPAIN.**

PRODUCT CODE L5POWER **NEW**

CERTIFICATION ATEX intrinsic safety  
 GAS ZONE 0 | 1 | 2, DUST ZONE 20 | 21 | 22  
 Ingress protection IP67

ADALIT



## LED TORCH L5 PLUS

**BURN:** up to 30 hours.  
**LIGHT OUTPUT:** 135lm.  
**BEAM DISTANCE:** 87m.  
**CONTROLS:** Soft touch push button tail switch, switches light between ON, ON (auto) and OFF.  
**LIGHT SENSOR TECHNOLOGY,** ON (auto) mode automatically adjusts brightness based on the ambient light.  
**POWERED BY:** L5PLUS.S 4 x AAA Alkaline batteries. L5PLUS.R 3.7v Li-ion battery which requires a charging station or 4 x AAA Alkaline batteries.  
**BODY:** Impact resistant, anti-static thermoplastic resin.  
**PHOTOLUMINESCENT BEZEL:** Increases visibility in low light.  
**HELMET TORCH:** Can be mounted on Pacific branded helmets with an Easi On/Off torch base using the A107118 Clip.  
**MADE IN SPAIN.**

PRODUCT CODE L5PLUS.S, L5PLUS.R

CERTIFICATION ATEX intrinsic safety  
 GAS ZONE 0 | 1 | 2, DUST ZONE 20 | 21 | 22  
 Ingress protection IP67

ADALIT



## L5 CHARGING STATION

3 VARIATIONS AVAILABLE: LCF5.1 (1-bay), LCF5.3 (3-bay), LCF5.5 (5-bay).  
**MADE IN SPAIN.**



PRODUCT CODE CL5.1++, CL5.3++, CL5.5++

CERTIFICATION Ingress protection IP66

ADALIT



## LED TORCH L1 PENLIGHT

**BURN:** 18 hours.  
**LIGHT OUTPUT:** 100lm.  
**BEAM DISTANCE:** 57m.  
**CONTROLS:** Push button tail switch.  
**POWERED BY:** 2 x AAA Alkaline Batteries.  
**BODY:** Shock resistant rubber casing.  
**INTEGRATED NEODYMINUM MAGNET.**  
**HELMET TORCH:** Can be mounted on any helmet or hard hat using the magnet mount.  
**MADE IN SPAIN.**

PRODUCT CODE L1

CERTIFICATION ATEX intrinsic safety  
 GAS ZONE 0 | 1 | 2, DUST ZONE 20 | 21 | 22  
 Ingress protection IP67

ADALIT



## LED TORCH L3000 POWER

**BURN:** Three power settings, 5 hour (high), 7.5 hour (medium) and 10 hour (low).  
**LIGHT OUTPUT:** 400lm.  
**BEAM DISTANCE:** 285m.  
**BOOSTER FUNCTION,** illuminates long distances with a greater penetrating light beam.  
**CONTROLS:** Oversized, soft touch power buttons.  
**POWERED BY:** Rechargeable 3.7v Li-Ion battery.  
**BODY:** Impact resistant, anti-static thermoplastic resin.  
**SWIVEL HEAD** with 3 locking points.  
**STEP LIGHTING SYSTEM,** two side LED's project light downward about 3m ahead of the user to illuminate the ground.  
**RUNTIME DISPLAY.**  
**MADE IN SPAIN.**

PRODUCT CODE L3000P

CERTIFICATION ATEX intrinsic safety  
 GAS ZONE 0 | 1 | 2, DUST ZONE 20 | 21 | 22  
 Ingress protection IP67

ADALIT



C.5000++

## L3000 CHARGING STATION

4 VARIATIONS AVAILABLE: CV.1000.24V (1-bay Vehicle Charger), C.1000 (1-bay 12/24V), C.3000++ (3-bay 12/24V), C.5000++ (12/24V-bay).  
**MADE IN SPAIN.**



C.1000++

PRODUCT CODE CV.1000.24V, C.1000++, C.3000++, C.5000++

CERTIFICATION Ingress protection IP66



■ UNDERWATER KINETICS 3AA ELED TORCH P50  
MOUNTED TO THE NSW RFS BR9 WILDLAND  
FIREFIGHTING HELMET P15



**UK** Underwater Kinetics



## ELED TORCH 3AA CPO

**BURN:** 7.8 hours.  
**LIGHT OUTPUT:** 150lm.  
**BEAM DISTANCE:** 71m.  
**CONTROLS:** Push button tail switch, switches light between ON/OFF with continuous or momentary action.  
**POWERED BY:** 3 x AA Alkaline Batteries (included).  
**BODY:** Electrically non-conductive, non-corroding ABS and polycarbonate plastic.  
**COMPOUND PATH OPTICS:** Creates a tighter more centre weighted beam which helps you see further in poor visibility conditions.  
**HELMET TORCH:** Can be mounted on Pacific branded helmets with an Easi On/Off torch base using the B2066146 Helmet Clip (sold separately).  
**MADE IN THE USA.**

**UK** Underwater Kinetics



## ELED TORCH 4AA ZOOM

**BURN:** 5 hours.  
**LIGHT OUTPUT:** 77lm.  
**BEAM DISTANCE:** 232m.  
**CONTROLS:** Push button front switch, switches light between ON/OFF with continuous or momentary action.  
**POWERED BY:** 4 x AA / LR6 Alkaline Batteries (included)  
**BODY:** Electrically non-conductive, non-corroding ABS and polycarbonate plastic.  
**PROJECTION OPTICS:** "Zoom" with a twist of the bezel from a wide beam to an intense spot.  
**HELMET TORCH:** Can be mounted on Pacific branded helmets with an Easi On/Off torch base using the B2066146 Helmet Clip (sold separately).  
**MADE IN THE USA.**

**UK** Underwater Kinetics



## ELED TORCH 4AA "RED HERCULITE"

**BURN:** 8 hours.  
**LIGHT OUTPUT:** 180lm.  
**CONTROLS:** Push button tail switch.  
**POWERED BY:** 4 x AA / LR6 Alkaline Batteries (included).  
**BODY:** Chemical resistant ABS and polycarbonate plastic.  
**HELMET TORCH:** Can be mounted on Pacific branded helmets with an Easi On/Off torch base using the B2066146 Helmet Clip (sold separately).  
**MADE IN THE USA.**

PRODUCT CODE UKT10034+

CERTIFICATION UL Certification Intrinsically safe Class 1, Division 1 under UL913 Edition 8  
Ingress protection IP67



PRODUCT CODE UKT14506

CERTIFICATION UL Certification Intrinsically safe Class 1, Division 1 under UL913 Edition 8  
Ingress protection IP67



PRODUCT CODE UKT514609-7A+

CERTIFICATION Ingress protection IP67

**UK** Underwater Kinetics



## VIZION® ELED HEADLAMP

**BURN:** 13 hours (high)/7 hours (low) burn.  
**LIGHT OUTPUT:** 65lm (high)/35lm (low).  
**BEAM DISTANCE:** 60m (high)/38m (low).  
**BEAM PATTERNS:** Spot, Diffuse and Red Diffuse.  
**CONTROLS:** Large push button control switch.  
**POWERED BY:** 3 x AAA / Alkaline or Lithium batteries.  
**BODY:** Electrically non-conductive, non-corroding ABS and polycarbonate plastic.  
**HELMET TORCH:** Can be mounted on helmets and hard hats via the elasticated headband.  
**MADE IN THE USA.**

**UK** Underwater Kinetics



## ELED GATORLITE®

**BURN:** 32 hours.  
**LIGHT OUTPUT:** 125lm.  
**BEAM DISTANCE:** 50m.  
**CONTROLS:** Large push button switch.  
**POWERED BY:** 3 x C / Alkaline Batteries.  
**BODY:** High Impact ABS, LEXAN®, polyurethane rubber, and stainless steel construction.  
**COMPOUND PATH OPTICS:** Improves visibility and efficiency - especially in poor visibility conditions.  
**BELT CLIP.**  
**MADE IN THE USA.**

**UK** Underwater Kinetics



## LIGHTHOUSE TORCH

**BURN:** 8.5 hours.  
**LIGHT OUTPUT:** 130lm.  
**BEAM DISTANCE:** Dual Beam: 147m (narrow) / 44m (wide).  
**CONTROLS:** Push button side switch.  
**POWERED BY:** 4 x AA / LR6 Alkaline Batteries.  
**BODY:** Electrically non-conductive, non-corroding ABS and polycarbonate plastic.  
**PIVOTING HEAD** for directional lighting.  
**NEODYMIUM MAGNET**, located in the base. Mounts to steel surfaces.  
**MADE IN THE USA.**

PRODUCT CODE UKT17018

CERTIFICATION UL Certification Intrinsically safe Class 1, Division 1 under UL913 Edition 8  
Ingress protection IP67



PRODUCT CODE UKT22101

CERTIFICATION UL Certification Intrinsically safe Class 1, Division 1 under UL913 Edition 8  
Ingress protection IP67



PRODUCT CODE UKT514703

CERTIFICATION UL Certification Intrinsically safe Class 1, Division 1 under UL913 Edition 8  
Ingress protection IP67







# BEACONS



## AT290 20CM SINGLE COLOUR EFLARE BEACON

Eflare Beacons are lightweight, compact and easy to deploy. They provide a fast solution to creating a highly visible warning or safety zone.

**BODY:** High visibility, durable, impact resistant ABS plastic beacon body and clips.

**LENS:** Shatterproof polycarbonate fresnel lens for maximum beam visibility and long service life.

**LED:** High-luminosity solid state LEDs rated for greater than 100,000 hour operating life.

**FLASH RATE:** 165-185fpm.

**BURN TIME:** 20+ hours.

**COLOUR CODED, BEACON LIGHT PINS.**

**PRECISION O-RINGS** makes beacon compliant with Ingress Protection IP66 (dustproof/water resistant) and Intrinsically Safe (safe to operate in hazardous areas).

**POSITIVE ACTIVATION MICROSWITCH** prevents accidental switch off of beacon.

**FUNCTION:** Steady on and flash.



## AT293 20CM DUAL COLOUR EFLARE BEACON

Eflare provides a safe, reusable and cost effective alternative to pyrotechnic or chemical flares. They are visible for a distance of more than 1 kilometre without night vision, point fixation or distance judgement problems associated with strobe or incandescent lighting.

**BODY:** High visibility, durable, impact resistant ABS plastic beacon body and clips.

**LENS:** Shatterproof polycarbonate fresnel lens for maximum beam visibility and long service life.

**LED:** High-luminosity solid state LEDs rated for greater than 100,000 hour operating life.

**FLASH RATE:** 165-185fpm.

**BURN TIME:** 20+ hours.

**COLOUR CODED, BEACON LIGHT PINS.**

**PRECISION O-RINGS** makes beacon compliant with Ingress Protection IP66 (dustproof/water resistant) and Intrinsically Safe (safe to operate in hazardous areas).

**POSITIVE ACTIVATION MICROSWITCH** prevents accidental switch off of beacon.

**FUNCTION:** Flash.



## AT280 15CM SINGLE COLOUR EFLARE BEACON

Eflares tried and trusted safety beacon in a compact size. Standing just 15cm tall this tough little beacon still supplies the user with 20+ hours of operating life per battery change.

**BODY:** High visibility, durable, impact resistant ABS plastic beacon body and clip.

**LENS:** Shatterproof polycarbonate fresnel lens for maximum beam visibility and long service life.

**LED:** High-luminosity solid state LEDs rated for greater than 100,000 hour operating life.

**FLASH RATE:** 165-185fpm.

**BURN TIME:** 20+ hours.

**COLOUR CODED, BEACON LIGHT PINS.**

**PRECISION O-RINGS** makes beacon compliant with Ingress Protection IP66 (dustproof/water resistant) and Intrinsically Safe (safe to operate in hazardous areas).

**POSITIVE ACTIVATION MICROSWITCH** prevents accidental switch off of beacon.

**FUNCTION:** Steady on and flash.

DUAL LIGHT RED & BLUE BEACONS ARE EMERGENCY SERVICES ONLY PRODUCTS. CONTACT OUR SALES TEAM FOR MORE DETAILS.

<b>PRODUCT CODE</b>	EFAT290	<b>PRODUCT CODE</b>	EFAT293	<b>PRODUCT CODE</b>	EFAT280
<b>BATTERY</b>	4 AA Batteries	<b>BATTERY</b>	4 AA Batteries	<b>BATTERY</b>	4 AA Batteries
<b>BEACON HEIGHT</b>	20cm	<b>BEACON HEIGHT</b>	20cm	<b>BEACON HEIGHT</b>	15cm
<b>COLOURS</b>	SINGLE COLOUR Amber, Blue, Green, Red	<b>COLOURS</b>	DUAL COLOUR Blue / White, Amber / Red, Red / White, Red / Blue	<b>COLOURS</b>	SINGLE COLOUR Amber, Blue, Red, White
<b>CERTIFICATION</b>	IECEX & ATEX Ex ic T4 Gc Intrinsically Safe Ingress protection IP66	<b>CERTIFICATION</b>	IECEX & ATEX Ex ic T4 Gc Intrinsically Safe Ingress protection IP66	<b>CERTIFICATION</b>	IECEX & ATEX Ex ic T4 Gc Intrinsically Safe Ingress protection IP66





## AT283 15CM DUAL COLOUR EFLARE BEACON

Eflare beacons boast an incredibly long service life thanks to high quality manufacturing materials such as shock resistant ABS plastics and shatterproof polycarbonate.

**BODY:** High visibility, durable, impact resistant ABS plastic beacon body and clip.

**LENS:** Shatterproof polycarbonate fresnel lens for maximum beam visibility and long service life.

**LED:** High-luminosity solid state LEDs rated for greater than 100,000 hour operating life.

**FLASH RATE:** 165-185fpm.

**BURN TIME:** 20+ hours.

**COLOUR CODED, BEACON LIGHT PINS.**

**PRECISION O-RINGS** makes beacon compliant with Ingress Protection IP66 (dustproof/water resistant) and Intrinsically Safe (safe to operate in hazardous areas).

**POSITIVE ACTIVATION MICROSWITCH** prevents accidental switch off of beacon.

**FUNCTION:** Flash.



## AT700 20CM SINGLE COLOUR EFLARE BEACON

All the features of the 290 series Eflares - powered by 2, D Cell batteries increasing operating life to 40+ hours. The handy battery charge indicator lets you keep track of cell life quickly and easily.

**BODY:** High visibility, durable, impact resistant ABS plastic beacon body and clips.

**LENS:** Shatterproof polycarbonate fresnel lens for maximum beam visibility and long service life.

**LED:** High-luminosity solid state LEDs rated for greater than 100,000 hour operating life.

**FLASH RATE:** 165-185fpm.

**BURN TIME:** 40+ hours.

**COLOUR CODED, BEACON LIGHT PINS.**

**PRECISION O-RINGS** makes beacon compliant with Ingress Protection IP66 (dustproof/water resistant) and Intrinsically Safe (safe to operate in hazardous areas).

**POSITIVE ACTIVATION MICROSWITCH** prevents accidental switch off of beacon.

**FUNCTION:** Steady on and flash.

**LOW BATTERY INDICATOR.**



## AT730 20CM DUAL COLOUR EFLARE BEACON

All the features of the 290 series Eflares - powered by 2, D Cell batteries increasing operating life to 40+ hours. The handy battery charge indicator lets you keep track of cell life quickly and easily.

**BODY:** High visibility, durable, impact resistant ABS plastic beacon body and clip.

**LENS:** Shatterproof polycarbonate fresnel lens for maximum beam visibility and long service life.

**LED:** High-luminosity solid state LEDs rated for greater than 100,000 hour operating life.

**FLASH RATE:** 165-185fpm.

**BURN TIME:** 40+ hours.

**COLOUR CODED, BEACON LIGHT PINS.**

**PRECISION O-RINGS** makes beacon compliant with Ingress Protection IP66 (dustproof/water resistant) and Intrinsically Safe (safe to operate in hazardous areas).

**POSITIVE ACTIVATION MICROSWITCH** prevents accidental switch off of beacon.

**FUNCTION:** Flash.

**LOW BATTERY INDICATOR.**

DUAL LIGHT RED & BLUE BEACONS ARE EMERGENCY SERVICES ONLY PRODUCTS. CONTACT OUR SALES TEAM FOR MORE DETAILS.

DUAL LIGHT RED & BLUE BEACONS ARE EMERGENCY SERVICES ONLY PRODUCTS. CONTACT OUR SALES TEAM FOR MORE DETAILS.

<b>PRODUCT CODE</b>	EFAT283	<b>PRODUCT CODE</b>	EFAT700	<b>PRODUCT CODE</b>	EFAT730
<b>BATTERY</b>	4 AA Batteries	<b>BATTERY</b>	2 D-Cell Batteries	<b>BATTERY</b>	2 D-Cell Batteries
<b>BEACON HEIGHT</b>	15cm	<b>BEACON HEIGHT</b>	20cm	<b>BEACON HEIGHT</b>	20cm
<b>COLOURS</b>	DUAL COLOUR White / Amber, Red / White, Red / Blue	<b>COLOURS</b>	SINGLE COLOUR Amber, Blue, Green, Red, White	<b>COLOURS</b>	DUAL COLOUR Red / Blue
<b>CERTIFICATION</b>	IECEX & ATEX Ex ic T4 Gc Intrinsically Safe Ingress protection IP66	<b>CERTIFICATION</b>	IECEX & ATEX Ex ic T4 Gc Intrinsically Safe Ingress protection IP66	<b>CERTIFICATION</b>	IECEX & ATEX Ex ic T4 Gc Intrinsically Safe Ingress protection IP66

DUAL LIGHT, RED & BLUE BEACONS ARE EMERGENCY SERVICES ONLY PRODUCTS.



## EFLARE RUBBER BASE

General purpose, rubberised base for all Eflare models.



## EFLARE AVIATION BASE

A secure, special purpose rubber mount for all models of Eflare.



## EFLARE PACKS

Everything you need to set up a highly visible warning or safety zone in one convenient pack.

### EACH PACK INCLUDES

- ④ Eflare Beacons
- ④ Eflare Base Mounts (EFBASE)
- ④ Eflare Cone Clips (EF500CM)
- ① Large Eflare Bag (EFMBAG)

PRODUCT CODE EFEMS++

### COLOURS

Blue (steady on / flash - AT290 beacons)  
Red (steady on / flash - AT290 beacons)

Red & White (flash - AT293 beacons)  
White & Amber (flash - AT293 beacons)  
Red & Blue (flash - AT730 beacons)

### CERTIFICATION

IECEx & ATEX Ex ic T4 Gc Intrinsically Safe  
Ingress protection IP66



## EFLARE MAGNETIC BASE

Magnetic base for all models of Eflare.

VEHICLE MOUNTING: Rated to 80kmh when securely mounted.



## EFLARE MAGNETIC CLIP

A magnetic clip suitable for attaching any Eflare beacon to a metal surface.

NOT SUITABLE FOR MOVING VEHICLES.

PRODUCT CODE EFBASE

PRODUCT CODE EFBASEAV

PRODUCT CODE EFMAGBASE

PRODUCT CODE EFMAGCLIP



## EFLARE CONE CLIP

Conveniently hang your Eflare beacon from most traffic cones.



## EFLARE SUCTION CLIP

Attach your Eflare beacon to a smooth surface.

NOT SUITABLE FOR MOVING VEHICLES.



## EFLARE FABRIC HOOD

A fabric hood that limits the Eflare beam to two directions.

COMPATIBILITY: All Eflare Beacons.



## EFLARE PLASTIC HOOD

Attaches to the top of an Eflare beacon to limit the spread of the light beam.

COMPATIBILITY: AT290, AT700 & AT730.

PRODUCT CODE EF500CM

PRODUCT CODE EFSCLIP

PRODUCT CODE EFHOOD

PRODUCT CODE EFHOOD2



## EFLARE SMALL BAG

Conveniently carry 2-3 Eflare beacons plus accessories.



## EFLARE LARGE BAG

Stow and carry 4-6 Eflare beacons plus accessories.

PRODUCT CODE EFSBAG

PRODUCT CODE EFMBAG





# FANS & VENTILATION



## BLOWHARD QUICKEE PPV FAN

The Quickee has been engineered to increase performance while taking up less space.

BlowHard's ErgoFold technology has evolved and played an instrumental role in creating a more powerful, smaller, lighter 508mm fan with increased manoeuvrability.

BlowHard Quickee increases both firefighter performance and efficiency during an incident. Resulting in a more efficient and effective firefighting process.

**A. DUAL POWERED:** operates on Li-Ion battery and mains power. Battery automatically charges when plugged into mains power while fan is off.

**B. VARIABLE SPEED:** with instant 'soft start' in battery and 240V mode.

**C. BLADE SIZE:** 508mm / 20".

**D. UNIT WEIGHT:** 21kgs.

**E. SOUND OUTPUT:** Sound: 87 dB @ 10 ft (3m).

**F. MAXIMUM CFM:** 11,400 AMCA value (19,369 m<sup>3</sup>/h).

**G. RUNTIME:** 45 minutes at 11,400 CFM AMCA, 4+ hours at 6,500 CFM.

**H. CHARGE TIME:** 0% - 90% in 1 hour 45 minutes / complete charge time 3 hours (no memory).

**I. TILT:** 0 - 180 degrees.

**J. BATTERY CYCLE LIFE:** Up to 500 full discharges, industry standard.

**K. SHOULDER STRAP,** facilitates easy deployment and repositioning.

**L. CARRY HANDLES.** Soft, high visibility carry handles with reflective strips.

**M. LIGHTING:** Adjustable angle path LED.

**N. BATTERY INDICATOR.** Illuminated panel shows battery level and includes flat battery indicator.



PRODUCT CODE	PPVQUICKEE <b>NEW</b>
APPLICATION	Structural Firefighting Positive Pressure Ventilation
MEASUREMENTS	53.4 x 53.4 x 24.8 / 21kgs
CERTIFICATION	Ingress Protection: IP67





## BLOWHARD COMMANDO PPV FAN

The Commando redefines battery powered PPV. It outperforms numerous petrol driven fans, while remaining lightweight and ergonomic.

Using Blowhard's innovative streamlined HighFlow Jet Technology and advanced ErgoFold design, you can expect all the power and performance of gas-powered fans without the CO<sub>2</sub>.

The Commando transports and deploys quickly and easily, reducing response time, even in the most challenging environments. A ventilation solution for small residences, large residences, halls, high-rise stairwells and more - Commando takes charge of it all.

**A. DUAL POWERED:** operates on Li-Ion battery and mains power. Battery automatically charges when plugged into mains power while fan is off.

**B. VARIABLE SPEED:** with instant 'soft start' in battery and 240V mode.

**C. BLADE SIZE:** 610mm / 24".

**D. UNIT WEIGHT:** 28kgs.

**E. SOUND OUTPUT:** Sound: 91 dB @ 10 ft (3m).

**F. MAXIMUM CFM:** 16,300 AMCA value (27,694 m<sup>3</sup>/h).

**G. RUNTIME:** 45 minutes at 16,300 CFM AMCA, 4 hours at 9,000 CFM, 6 hours at 8,000 CFM.

**H. CHARGE TIME:** 0% - 90% in 2 hours / complete charge time 3 hours (no memory).

**I. BATTERY CYCLE LIFE:** Up to 500 full discharges, industry standard.

**J. TILT:** 0 - 180 degrees.

**K. SHOULDER STRAP,** facilitates easy deployment and repositioning.

**L. CARRY HANDLES.** Soft, high visibility carry handles with reflective strips.

**M. LIGHTING:** Adjustable angle path LED.

**N. BATTERY INDICATOR.** Illuminated panel shows battery level and includes flat battery indicator.



PRODUCT CODE	PPVCOMMANDO <b>NEW</b>
APPLICATION	Structural Firefighting Positive Pressure Ventilation
MEASUREMENTS	64.2 x 64.2 x 26.1cm / 28kgs
CERTIFICATION	Ingress Protection: IP67





## BLOWHARD BH-20 PPV FAN

Blowhard's BH-20 PPV fan has been designed for high pressure to effectively drive ventilation. The high velocity jet stream produced by the BH-20 assists in building pressure to effectively clear smoke from the structure.

Boasting unique design and construction, the BH-20 is lightweight, compact and incredibly durable.

The soft start motor can be powered with both a mains outlet or Blowhard's long lasting, Li-Ion battery pack. This feature allows the fan to be set up faster and started instantly - in some instances cutting down response time by up to 6 minutes.

**DUAL POWERED:** operates on Li-Ion battery and mains power. Battery automatically charges when plugged into mains power while fan is off.

**VARIABLE SPEED:** with instant 'soft start' in battery and 240V mode.

**BLADE SIZE:** 508mm / 20".

**UNIT WEIGHT:** 26.8kgs.

**SOUND OUTPUT:** 84 dB @ 10 ft (3m).

**MAXIMUM CFM:** 10,200 AMCA value (17, 340 m<sup>3</sup>/h).

**RUNTIME:** 35 minutes at 10,200CFM or 3.5 hours at 4,000CFM.

**CHARGE TIME:** Complete charge time 3 hours (no memory).

**BATTERY CYCLE LIFE:** Up to 2000 full discharges.

**TILT:** 0 - 90 degrees.

**SHOULDER STRAP:** facilitates easy deployment and repositioning.



## BLOWHARD MISTING RING

Firefighters experience high amounts of physical and mental stress when attending an incident. When combined with the environmental factors like extreme heat, humidity or cold, firefighters can find themselves in conditions that may have adverse impacts on their health and well-being.

The Misting Ring transforms your Blowhard fan into an effective recovery tool that assists in combating heat stress.

The Blowhard Misting Ring fits quickly to the front of Blowhard Fans. When attached to a regular, domestic hose, the Misting Ring creates a super fine "mist", which aids in firefighter recovery after training or an incident.

**COMPATIBILITY:** Magnetically attaches to the front of the Blowhard BH-20 (PPVBH-20DP), Blowhard Command (PPVCOMMANDO) and Blowhard Quickie (PPVQUICKIE). Connects to water source via a standard garden hose.

**CONSTRUCTION:** corrosion resistant stainless steel and brass components.

**FILTRATION:** Inline 40mic filter prevents debris from clogging the misting nozzles.

**UNIT WEIGHT:** 1.3kgs.



WATCH VIDEO CONTENT FEATURING THE MISTING RING BY SCANNING THE QR CODE WITH YOUR MOBILE PHONE CAMERA. ALTERNATIVELY NAVIGATE TO OUR YOUTUBE CHANNEL TO VIEW OUR VIDEO LIBRARY: [YOUTUBE.COM/PACFIRETV](https://www.youtube.com/PACFIRETV)

<b>PRODUCT CODE</b>	PPVBH-20DP	<b>PRODUCT CODE</b>	PPVMR+
<b>APPLICATION</b>	Structural Firefighting Positive Pressure Ventilation	<b>APPLICATION</b>	Structural Firefighting Recovery and Active Cooling
<b>MEASUREMENTS</b>	61.0 x 61.0 x 25.4cm / 26.8kgs	<b>MEASUREMENTS</b>	42 x 35 x 4cm / 1.3kgs
<b>CERTIFICATION</b>	Ingress Protection: IP66	<b>CERTIFICATION</b>	NFPA 1584 (active cooling measures)





**FOAM**





## PAC FOAM CLASS A SUPER CONCENTRATE



**SUPER CONCENTRATE.** Pac Foam Super Concentrate makes 20 litres of Class A foam concentrate when added to 18 litres of water as per the product instructions.

**PERFORMANCE:** Specially developed to create a well formed foam blanket with excellent bubble structure, Pac Foam clings to solid combustibles, and acts as thermal barrier.

**SIZE:** 2 litre jug. 21.5 x 17cm x 9cm / 2.2kgs.

**COLOUR:** creates an easily visible, white foam.

**ENVIRONMENTALLY FRIENDLY,** biodegradable formula.

**PROPORTION RATE:** 0.1% to 1% (after dilution).



## SOLBERG FIRE-BRAKE 3150A



**PERFORMANCE:** Formulated to hold onto water and slowly release. Creates a well formed foam blanket with excellent bubble structure, Fire-Brake clings to fuel, and acts as thermal barrier.

**COLOUR:** creates an easily visible, white foam.

**ENVIRONMENTALLY FRIENDLY,** biodegradable formula.

**SHELF LIFE:** 20 years.

**PROPORTION RATE:** 0.1% to 1%.



## SOLBERG RE-HEALING FOAM RF3



**PERFORMANCE:** Possesses excellent burn back resistance on Class B hydrocarbon fuel fires. The foam can be used to prevent re-ignition of a liquid spill and control hazardous vapors. Proportion with fresh, sea or brackish water.

**DRY CHEMICAL COMPATIBLE.**

**HIGH TEMPERATURE RESISTANT.**

**ENVIRONMENTALLY FRIENDLY,** fluorine free.

**SHELF LIFE:** 20 years.

**PROPORTION RATE:** 3% for hydrocarbon fuel fires.

PRODUCT CODE	PACFOAM
SIZE	2 Litre Jug
APPLICATION	Firefighting - Class A (combustible solids - mop up, back burn or protection)
CERTIFICATION	U.S. Forest Service, Qualified Products List, Specification 5100-307a NFPA1150: 2017

PRODUCT CODE	SFFB3150A
SIZE	20 Litre Pail, 200 Litre Drum, 1000 Litre Tote
APPLICATION	Firefighting - Class A (combustible solids - mop up, back burn or protection)
CERTIFICATION	U.S. Forest Service, Qualified Products List, Specification 5100-307a NFPA1150: 2017

PRODUCT CODE	RF3
SIZE	20 Litre Pail, 200 Litre Drum, 1000 Litre Tote
APPLICATION	Firefighting - Class B (flammable liquid - hydrocarbons)
CERTIFICATION	ICAO EN1568, DEF (Aust) 5706



## SOLBERG RE-HEALING FOAM RF6



**PERFORMANCE:** Possesses excellent burn back resistance on Class B hydrocarbon fuel fires. The foam can be used to prevent re-ignition of a liquid spill and control hazardous vapors. Proportion with fresh, sea or brackish water.

**DRY CHEMICAL COMPATIBLE.**

**HIGH TEMPERATURE RESISTANT.**

**ENVIRONMENTALLY FRIENDLY,** fluorine free.

**SHELF LIFE:** 20 years.

**PROPORTION RATE:** 6% for hydrocarbon fuel fires.



## SOLBERG RE-HEALING FOAM 3x3 ATC



**PERFORMANCE:** Creates well formed bubbles that cling to vertical surfaces and hot metal during liquid fires, chemical spills or vapour suppression. Proportion with fresh, sea or brackish water.

**DRY CHEMICAL COMPATIBLE.**

**ENVIRONMENTALLY FRIENDLY,** fluorine free.

**SHELF LIFE:** 20 years.

**PROPORTION RATE:** 3% for hydrocarbon fuel fires or 3% for polar solvent fuel fires.



## SOLBERG RE-HEALING FOAM 3x6 ATC



**PERFORMANCE:** Creates well formed bubbles that cling to vertical surfaces and hot metal during liquid fires, chemical spills or vapour suppression. Proportion with fresh, sea or brackish water.

**DRY CHEMICAL COMPATIBLE.**

**ENVIRONMENTALLY FRIENDLY,** fluorine free.

**SHELF LIFE:** 20 years.

**PROPORTION RATE:** 3% for hydrocarbon fuel fires or 6% for polar solvent fuel fires.

PRODUCT CODE	RF6
SIZE	20 Litre Pail, 200 Litre Drum, 1000 Litre Tote
APPLICATION	Firefighting - Class B (flammable liquid - hydrocarbons)
CERTIFICATION	ICAO Level B with Salt & Fresh Water DEF (Aust) 5706

PRODUCT CODE	RF3X3
SIZE	20 Litre Pail, 200 Litre Drum, 1000 Litre Tote
APPLICATION	Firefighting - Class B (flammable liquid - hydrocarbons & polar solvents)
CERTIFICATION	ICAO Level B with Salt & Fresh Water EN1568:3 & 4 LASTFire

PRODUCT CODE	RF3X6
SIZE	20 Litre Pail, 200 Litre Drum, 1000 Litre Tote
APPLICATION	Firefighting - Class B (flammable liquid - hydrocarbons & polar solvents)
CERTIFICATION	ICAO Level B with Salt & Fresh Water EN1568:3 & 4 LASTFire







## SOLBERG HIGH EXPANSION FOAM

**PERFORMANCE:** A synthetic foaming agent that displaces air to extinguish Class A and Class B (hydrocarbons) fires. Economical and effective solution for difficult to access areas, like warehouses. Suitable to be used with other firefighting foam products.

**ENVIRONMENTALLY FRIENDLY,** fluorine free.

**SHELF LIFE:** 20 years.

**PROPORTION RATE:** 1%-2% for hydrocarbon fuel fires.



## SOLBERG TRAINING FOAM

**PERFORMANCE:** Designed for cold training exercises to allow crews to become familiar with equipment as well as hot training exercises with hydrocarbon, non-water miscible fuels.

**ENVIRONMENTALLY FRIENDLY,** no organohalides or other persistent chemicals. Designed for minimal environmental impact.

**SHELF LIFE:** 5 years.

**PROPORTION RATE:** 6%, training only.



## SOLBERG TRAINING FOAM BOX 10, 1L BOTTLES

**SUPER CONCENTRATE.** Dilute by adding 1 litre of training foam super concentrate per 19 litres of water.

**PERFORMANCE:** Designed for cold training exercises to allow crews to become familiar with equipment as well as hot training exercises with hydrocarbon, non-water miscible fuels.

**ENVIRONMENTALLY FRIENDLY,** no organohalides or other persistent chemicals. Minimal environmental impact.

**SHELF LIFE:** 5 years.

**PROPORTION RATE:** 6% (after dilution), training only.

<b>PRODUCT CODE</b>	SFHIEX	<b>PRODUCT CODE</b>	SFD03155	<b>PRODUCT CODE</b>	SCTF
<b>SIZE</b>	20 Litre Pail, 200 Litre Drum, 1000 Litre Tote	<b>SIZE</b>	20 Litre Pail, 200 Litre Drum, 1000 Litre Tote	<b>SIZE</b>	Box containing 10 x 1 Litre bottles.
<b>APPLICATION</b>	Firefighting - Class A (combustible solids) & Class B (flammable liquid - hydrocarbons)	<b>APPLICATION</b>	Firefighting - Training: cold training and hot exercises involving Class B (flammable liquid - hydrocarbons)	<b>APPLICATION</b>	Firefighting - Training: cold training and hot exercises involving Class B (flammable liquid - hydrocarbons)
<b>CERTIFICATION</b>	EN1568.2 ISO 7203-2				



## SOLBERG AVIGARD 3B 3%

**PERFORMANCE:** A high fluidity, slow drainage aviation foam with low viscosity. Solberg Avigard is designed for extinguishing and securing flammable aviation fuel spills and fires. Proportion with fresh, sea or brackish water.

**ENVIRONMENTALLY FRIENDLY,** fluorine free.

**SHELF LIFE:** 20 years.

**PROPORTION RATE:** 3% for hydrocarbon fuel fires.



## PHOS CHEK 1% CLASS A/B

**PERFORMANCE:** Designed for rapid control and knock down in both gentle and forceful applications on hydrocarbon fuel fires. Effective wetting agent for use on Class A fires involving ordinary combustible materials.

**ENVIRONMENTALLY FRIENDLY,** fluorine free.

**SHELF LIFE:** 20 years.

**PROPORTION RATE:** 0.1% to 1% for combustible solids or 1% for hydrocarbon fuel fires.



## SOLBERG VERSAGARD 3X3

**PERFORMANCE:** Creates very stable foams with high fluidity and slow drainage. Delivers excellent foaming, vapour sealing, extinguishment and burn back properties for attacking and securing both shallow and fuel in-depth fires. Proportion with fresh, sea or brackish water.

**ENVIRONMENTALLY FRIENDLY,** fluorine free.

**SHELF LIFE:** 20 years.

**PROPORTION RATE:** 3% for hydrocarbon fuel fires or 3% for polar solvent fuel fires.

<b>PRODUCT CODE</b>	SFAV3B	<b>PRODUCT CODE</b>	PC1	<b>PRODUCT CODE</b>	PCU3X3
<b>SIZE</b>	20 Litre Pail, 200 Litre Drum, 1000 Litre Tote	<b>SIZE</b>	20 Litre Pail, 200 Litre Drum, 1000 Litre Tote	<b>SIZE</b>	20 Litre Pail, 200 Litre Drum, 1000 Litre Tote
<b>APPLICATION</b>	Aviation Firefighting - Class B (flammable liquid - hydrocarbons)	<b>APPLICATION</b>	Firefighting - Class A (combustible solids) & Class B (flammable liquid - hydrocarbons)	<b>APPLICATION</b>	Firefighting - Class B (flammable liquid - hydrocarbons & polar solvents)
<b>CERTIFICATION</b>	ICAO Level B with Salt & Fresh Water	<b>CERTIFICATION</b>	UL 162/ULC S654 Listed UL/ULC Classified Class A Wetting Agent ANSI/NFPA 18 EN1568-3:2008 (Class 1B)	<b>CERTIFICATION</b>	EN1568: 1, 2, 3 & 4 UL 162/ULC S654 Listed MSC.1/Circ. 1312 LASTFIRE ICAO Level B with Salt & Fresh Water





**STORAGE  
SOLUTIONS**

## GROVES READY RACK

Since 1980, Groves Incorporated has been a leader in storage and transportation systems. The pioneers of open-air PPC storage, Groves Incorporated has expanded their product offering over the years to include heavy duty Red Rack as well as other storage, cleaning and drying solutions.

Red Rack lockers help teams organise their space and keep track of equipment, resulting in improved response times. Designed to encourage maximum air circulation, Red Racks facilitate faster drying times, increasing the lifespan of valuable PPE/C.

## HELP US, HELP YOU. ORDERING READY RACK.

**REVIEW THE OPTIONS.** Red Rack is available in several different configurations to suit your application and available space. Choose between Freestanding, Wall Mounted, Mobile, or a combination to maximise your storage.

**TELL US YOUR STORAGE NEEDS.** Each Red Rack bay will accommodate PPE/C for a single team member. It's important we know how many bays are required, remembering you can add bays as your needs change.

**PROVIDE US WITH A DETAILED FLOOR PLAN.** The modular nature of Red Rack makes it highly customisable. Providing our staff with a detailed floor plan of your space, including the location of doors and other fixtures will help us collaborate on a solution that's right for you.



## RED RACK™ DRY & STORE MOBILE HOSE RACK

Dry and store your hose on the same unit. The Red Rack Dry and Store Hose Rack is a great solution for smaller stations.

**CONSTRUCTION:** Heavy duty steel with a red powder coated finish. Includes four 125mm swivel casters.

**CONFIGURATION:** Mobile unit. Dry and store hose on the same rack. Ideal solution for smaller stations.

**DRY:** up to 270m of 38-44mm hose or 180m of 63-76mm hose.

**STORE:** up to 195m of 63mm hose.

**EASY TO ASSEMBLE.  
MADE IN THE USA.**



RAKHC-64-2T  
2 TIER MOBILE  
HOSE CART

## RED RACK™ MOBILE HOSE CART

Keep hose organised with the mobile hose cart from Ready Rack. This hose cart is mounted on durable swivel casters meaning you can reposition your hoses quickly and easily.

**CONSTRUCTION:** Heavy duty steel with a red powder coated finish. Includes four 125mm swivel casters.

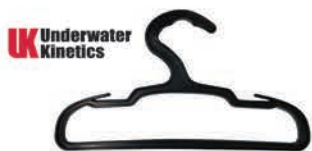
**CONFIGURATION:** Mobile unit. Two tier **RAKHC-64-2T** and three tier options **RAKHC-64-3T** available.

**STORE:** supports hose coils up to 250m. Capacity 2000kg.

**EASY TO ASSEMBLE.  
MADE IN THE USA.**

PRODUCT CODE	RAKDSHR
DIMENSIONS	200 x 82.5 x 220cm / 113.5kgs

PRODUCT CODE	RAKHC-64-2T ①, RAKHC-64-3T ②
DIMENSIONS	① 180 x 85 x 197.5cm / 113.5kgs ② 180 x 85 x 217.5cm / 143.0kgs



## GORILLA BIG GEAR HANGER

Lightweight, ABS plastic resin will not rust. Supports up to 20kgs.



## FLAT DRY HANGER

Made from 7.8mm zinc chromate in the USA.



## DRY KWIK HANGER

This hanger opens shoulders and front of coat permitting inside air circulation. Made from zinc chromate.



## GLOVE DRY HANGER

This open loop hanger opens gloves permitting inside air circulation. Made from zinc chromate.

PRODUCT CODE	UKTSFH	PRODUCT CODE	RAKFDH-DZ	PRODUCT CODE	RAKDKH-OZ	PRODUCT CODE	RAKGDH
--------------	--------	--------------	-----------	--------------	-----------	--------------	--------



## HELMET HOLDER

Zinc chromate helmet holder with a top diameter of 125mm and base measuring 200mm.



## GEAR GUARD

Designed to fit the Red Rack Mobile and Freestanding lockers to protect PPE/C from UV light during storage.



## PROPERTY BOX

Provides secure storage for keys, phones and other personal items. Includes: metal bracket, nuts, acorn bolt cover.



## BENCH SEAT

Freestanding bench made from steel legs with hardwood butcher block seat.

PRODUCT CODE	RAKHH	PRODUCT CODE	RAKGGR	PRODUCT CODE	RAKPPB	PRODUCT CODE	RAKRRB-48
--------------	-------	--------------	--------	--------------	--------	--------------	-----------





RAKRFSS-3/20+  
SINGLE SIDED - 3 BAYS



RAKSEC-20+  
SECURITY KIT - SINGLE BAY  
(OPTIONAL)

## RED RACK™ FREESTANDING

Heavy duty Red Rack™ Freestanding compartments can be customised around a stations existing floor plan and expanded to meet growing personnel needs.

**CONSTRUCTION:** Heavy duty, tubular steel with a red powder coated finish.

**CONFIGURATION:** Freestanding unit, on fixed legs. Single sided RAKRFSS or double sided (RAKRFDS) bays.

**COMPARTMENT:** 50cm wide.

**SECURITY:** Security kit for single sided bay RAKSEC-20+ includes a top security shelf, a rear security panel and a lockable door. Security kit for double sided bay RAKDSSEC-20+ includes a top security shelf and a lockable door.

**MODULAR:** Can be ordered in a length to suit available space and requirements.

**EASY TO ASSEMBLE.** Detailed instructions included with every module.



RAKRRWM-3/20+  
WALL MOUNTED - 3 BAYS



## RED RACK™ WALL MOUNTED

Get organised with the wall mounted modules from Ready Rack. They are fast and easy to install with handy directions included with every module.

**CONSTRUCTION:** Heavy duty, tubular steel with a red powder coated finish.

**CONFIGURATION:** Wall mounted unit. Single sided RAKRRWM bays.

**COMPARTMENT:** 50cm wide.

**SECURITY:** Security kit for single sided bay RAKSEC-20+ includes a top security shelf, a rear security panel and a lockable door.

**MODULAR:** Can be ordered in a length to suit available space and requirements.

**EASY TO INSTALL.**

**STATION FRIENDLY:** Open back design allows for easy wall access and use of outlets. No electrician or wiring required.



RAKRMSS-3/20+  
SINGLE SIDED - 3 BAYS



RAKSEC-20+  
SECURITY KIT - SINGLE BAY  
(OPTIONAL)

## RED RACK™ MOBILE

Groves Incorporated, creators of Red Rack have been leaders in storage for over 30 years. Heavy duty Red Rack™ Mobile compartments are the perfect solution to meet a stations growing personnel needs.

**CONSTRUCTION:** Heavy duty, tubular steel with a red powder coated finish. Four durable, swivel casters.

**CONFIGURATION:** Mobile unit. Single sided RAKRMSS or double sided RAKRMDS bays.

**COMPARTMENT:** 50cm wide.

**SECURITY:** Security kit for single sided bay RAKSEC-20+ includes a top security shelf, a rear security panel and a lockable door. Security kit for double sided bay RAKDSSEC-20+ includes a top security shelf and a lockable door.

**MODULAR:** Can be ordered in a length to suit available space and requirements.

**MANOEUVRABLE.** Reposition quickly and easily without the need to unload and disassemble.

**EASY TO ASSEMBLE.** Detailed instructions included with every module.

PRODUCT CODE	RAKRFSS, RAKRFDS	PRODUCT CODE	RAKRRWM	PRODUCT CODE	RAKRMSS, RAKRMDS
<b>DIMENSIONS</b>	50cm wide x 50cm deep x 197.5cm high (each compartment)	<b>DIMENSIONS</b>	50cm wide x 50cm deep x 180cm high (each compartment)	<b>DIMENSIONS</b>	50cm wide x 50cm deep x 202.5cm high (each compartment)
<b>CONTENTS</b>	<p>EACH COMPARTMENT INCLUDES</p> <ul style="list-style-type: none"> <li>2 Apparel hooks per locker unit</li> <li>1 Adjustable helmet shelf</li> <li>1 Adjustable boot shelf</li> <li>1 Hanging pole (spans the length of the unit)</li> <li>1 Name plate</li> </ul>	<b>CONTENTS</b>	<p>EACH COMPARTMENT INCLUDES</p> <ul style="list-style-type: none"> <li>2 Apparel hooks per locker unit</li> <li>1 Adjustable helmet shelf</li> <li>1 Adjustable boot shelf</li> <li>1 Hanging pole (spans the length of the unit)</li> <li>1 Name plate</li> </ul>	<b>CONTENTS</b>	<p>EACH COMPARTMENT INCLUDES</p> <ul style="list-style-type: none"> <li>2 Apparel hooks per locker unit</li> <li>1 Adjustable helmet shelf</li> <li>1 Adjustable boot shelf</li> <li>1 Hanging pole (spans the length of the unit)</li> <li>1 Name plate</li> </ul>



# EMERGENCY SERVICES BAGS



# BAGS & STORAGE SOLUTIONS

 CARIBEE



## WHEELIE BIG BAG

**MATERIAL:** Heavy duty rip stop, water resistant nylon outer fabric with metal componentry. Webbed carry handles.

**HANDLES:** Two carry handles with hook and loop wrap. One front mounted 'pull' handle. One shoulder strap with padded slider.

**WHEELS:** Two heavy duty, roller blade wheels mounted bottom, rear.

**OPENING:** Wide mouth, top opening. Zip length 60cm.

**POCKETS:** One external end pocket with zip closure. Two separate, waterproof internal compartments.

**WINDOW:** One clear window on centred on the outside of the bag, measures 12 x 15cm.

**BRANDING:** heat applied, vinyl logo and name personalisation available at an additional cost.

**VENTILATION HOLES.**

**EASY CLEAN.**

 CARIBEE



## MEDIUM GEAR STOW BAG

**MATERIAL:** Heavy duty rip stop, water resistant nylon outer fabric with metal componentry. Webbed carry handles.

**HANDLES:** Two carry handles with hook and loop wrap. One shoulder strap with padded slider.

**OPENING:** Wide mouth, top opening. Zip length 55cm.

**POCKETS:** One external end pocket with zip closure. Two separate, waterproof internal compartments.

**WINDOW:** One clear window on centred on the outside of the bag, measures 12 x 15cm.

**BRANDING:** heat applied, vinyl logo and name personalisation available at an additional cost.

**VENTILATION HOLES.**

**EASY CLEAN.**

 CARIBEE



## BUDGIE BAG

**MATERIAL:** Heavy duty rip stop, water resistant nylon outer fabric with metal componentry. Webbed carry handles.

**HANDLES:** One carry handle. One chest strap with padded slider. Two concealed, padded back pack straps.

**OPENING:** Wide opening with two way metal zips.

**POCKETS:** One large mesh pocket. Two smaller, drink bottle carriers. Four separate internal compartments and one internal hydration bladder compartment.

**WINDOW:** One clear window located on the top of the bag, measures 6 x 8cm.

**BRANDING:** heat applied, vinyl logo and name personalisation available at an additional cost.

**REFLECTIVE:** 3 pieces of silver reflective tape sewn on to the outside of the bag.

**PRODUCT CODE** BAG5817

**DIMENSIONS** 70 x 40 x 50cm

**COLOURS** Red (pictured), Navy Blue

**PRODUCT CODE** BAG5816

**DIMENSIONS** 57 x 30 x 40cm

**COLOURS** Red (pictured), Navy Blue

**PRODUCT CODE** BAG2388

**DIMENSIONS** 28 x 50 x 25cm

**COLOURS** Red (pictured), Navy Blue





## PPC TRANSPORT BAG

**MATERIAL:** E/P PVC 0.55mm 660D. Webbed carry handles.

**HANDLES:** One large, top carry handle and one smaller side handle.

**OPENING:** Dual sliding zips around 2 sides of the bag provide wide opening.

**WINDOW:** One large, framed window front, centre, measures 14 x 14cm. Two small, framed windows side, measures 7 x 11cm each.



BAG5814



## PADDED HELMET BAG

**MATERIAL:** Heavy duty polyester with padded lining. Webbed carry handle.

**HANDLES:** One large carry / hanging handle on the side of the bag.

**OPENING:** Dual sliding zips around two thirds of the bag for wide opening.

**TWO SIZES:** Medium suitable for structural fire helmets, small suitable for wildland fire and rescue helmets. Small pictured.





## HELMET SLING BAG

**MATERIAL:** Knitted, brushed polyester.

**HANDLES:** Drawstring acts as shoulder strap.

**OPENING:** Drawstring with stopper.

**SIZE:** One size, fits all Pacific branded structural firefighting helmets, wildland firefighting helmets and rescue helmets.

**PRODUCT CODE** BAGPPC

**DIMENSIONS** 45 x 42 x 15cm

**COLOURS** Red (pictured)

**PRODUCT CODE** BAG5814, BAG5813

**DIMENSIONS** 22 x 28 x 22cm / small (pictured)  
23 x 46 x 22cm / medium

**COLOURS** Black

**PRODUCT CODE** A115210

**DIMENSIONS** 42 x 42cm

**COLOURS** Black



## DOT ALL ROUND NEXT GEN BAG

The DOT all purpose bag is a storage device for contaminated protective clothing. The product also contains a protective compartment for storage of clean clothes. It is an encapsulation system developed for fire and rescue personnel – reducing exposure from contaminated PPE during handling and transport. The DOT bag is easy to work with, safe and specially adapted for fire and rescue vehicles.

**MATERIAL:** Polyester reinforced polyvinyl chloride, black.

**HANDLES:** Webbed handles on the outside of the bag when zipped closed. When expanded, top of the bag folds over and is secured by quick release clip, creating a carry handle.

**OPENING:** Centralised DPTI zipper opens bag completely to facilitate easy loading.

**POCKETS:** One complete separated, internal pocket. Measures 46cm x 46cm.

**EASY TO CLEAN:** material will wipe clean or can be machine washed in 40°C water.



## DOT EXTRA LARGE EQUIPMENT BAG

The classic DOT equipment bag in an extra large size. DOT equipment is a storage device for contaminated protective clothing. It is an encapsulation system developed for fire and rescue personnel – reducing exposure from contaminated PPE during handling and transport. DOT bags are easy to work with, safe and specially adapted for fire and rescue vehicles.

**MATERIAL:** Polyester reinforced polyvinyl chloride, black.

**HANDLES:** Webbed handle on front of the bag. Top of the bag folds over and is secured by quick release clip, creating a carry handle.

**OPENING:** Centralised DPTI zipper opens bag completely to facilitate easy loading.

**CONTAMINATION INDICATOR:** Reversible fold over bag closure acts as a contamination indicator. Green for safe, red for soiled.

**EASY TO CLEAN:** material will wipe clean or can be machine washed in 40°C water.



## DOT SYSTEM SEALED BAG

DOT Sealed is an encapsulating bag, welded with TPU and a gas-tight zipper. Extra durable for extreme conditions. The DOT Sealed bag features an outer compartment for storage of other items away from potentially contaminated PPE/C.

**MATERIAL:** Thermoplastic polyurethane coated nylon, yellow.

**HANDLES:** Two webbed carry handles with contamination indicator wrap secured with hook and loop. One side handle with industrial plastic grip. One shoulder strap with padded with thermoplastic polyurethane coated nylon slider.

**OPENING:** welded with TPU and a gas-tight zippers. Includes sturdy 4cm long zip puller.

**POCKETS:** One external pocket completely separated from the main part of the bag. Measures 30cm x 15cm.

**WINDOW:** 7 x 7.5cm clear document window made from PVC.

**CONTAMINATION INDICATOR:** Reversible handle wrap acts as contamination indicator. Green for safe, red for soiled.

**EASY TO CLEAN:** material will wipe clean or can be machine washed in 40°C water.



**PRODUCT CODE** DOT-01 NEXTGEN

**DIMENSIONS** 48 x 90cm / 1.85 empty.

**CERTIFICATION** Endorsed by Healthy Firefighters

**PRODUCT CODE** DOT-02XL

**DIMENSIONS** 70 x 85cm / 1.39kg empty.

**CERTIFICATION** Endorsed by Healthy Firefighters

**PRODUCT CODE** DOT-S-01

**DIMENSIONS** 45 x 80cm / 1.6kgs empty.

**CERTIFICATION** Endorsed by Healthy Firefighters



# BAGS & STORAGE SOLUTIONS



## MERET OMNI™ PRO

**MATERIAL:** Constructed from wipe clean infection control materials internally and externally. Bright internal materials with foam padding for easy view and protection of supplies. Double stitching on all stress points. Matte finish metal hardware with oversized YKK zippers. Includes riveted bottom skid runners.

**HANDLES & STRAPS:** One soft, comfort grip with reflective Meret logo. One large top grip with reinforced industrial plastic on the outside. One removable, padded shoulder strap. Hideaway adjustable, padded, contoured yoke backpack strap harness system.

**OPENING:** Dual sliding zips around 3 sides of the main compartment provide wide opening.

**POCKETS:** One large DEEP STUFF™ pocket with double zip. One small front pocket with double zip and two elasticised mesh compartments. Two small pockets on the top of the bag.

**WINDOW:** 7.5 x 43.75cm front name tape area.

**SLIDERS™ SYSTEM:** Customisable internal main compartment using specialised foam dividing panels.

**MERET MODULES:** TS2 module Ready™. Customise OMNI™ PRO with the airway intubation module M8101A, Xtra Fill module M8101C and MEDKIT™ medications module M8101J (sold separately).

**VENTILATION HOLES.**  
EASY CLEAN.

## MERET RECOVER™ PRO

**MATERIAL:** Constructed from wipe clean infection control materials internally and externally. Bright internal materials with foam padding for easy view and protection of supplies. Lined back and bottom resists water and wear. Double stitching on all stress points. Matte finish metal hardware with oversized YKK zippers. Includes riveted bottom skid runners.

**HANDLES & STRAPS:** Two soft, comfort grip with reflective Meret logo on either side of the bag. One large top grip with reinforced industrial plastic on the outside. Hideaway adjustable, padded, contoured yoke backpack strap harness system.

**OPENING:** Dual sliding zips around 3 sides of the main compartment provide wide opening. Secures M9 (255 litres), D (425 litres), Jumbo D (623 litres) aluminium cylinders, or 425/623 litre composite oxygen cylinders.

**POCKETS:** Two small pockets on either side of the bag positioned at the bottom.

**MERET MODULES:** TS2 module Ready™. Customise the RECOVER™ PRO with XTRA FILL™ module M8101C (sold separately).

**VENTILATION HOLES.**  
EASY CLEAN.

## MERET M.U.L.E™ PRO

**MATERIAL:** Constructed from wipe clean infection control materials internally and externally. Bright internal materials with foam padding for easy view and protection of supplies. Double stitching on all stress points. Matte finish metal hardware with oversized YKK zippers. Includes riveted bottom skid runners.

**HANDLES & STRAPS:** Two soft, comfort grip with reflective Meret logo. One stowable, extendible travel handle made from steel and industrial plastic. Hideaway adjustable, padded, contoured yoke backpack strap harness system.

**OPENING:** Dual sliding zips around 3 sides of the main compartment provide wide opening.

**POCKETS:** One large pocket on bag front with double zip. Two small, slimline pockets with single zip.

**WINDOW:** Large front name tape area.

**SLIDERS™ SYSTEM:** Customisable internal main compartment using specialised foam dividing panels.

**MERET MODULES:** TS2 module Ready™. Customise M.U.L.E™ PRO with the airway intubation module M8101A, XTRA FILL™ module M8101C, MEDKIT™ medications module M8101J and X2™ Double Fill Pro M5101L (sold separately).

**VENTILATION HOLES.**  
EASY CLEAN.

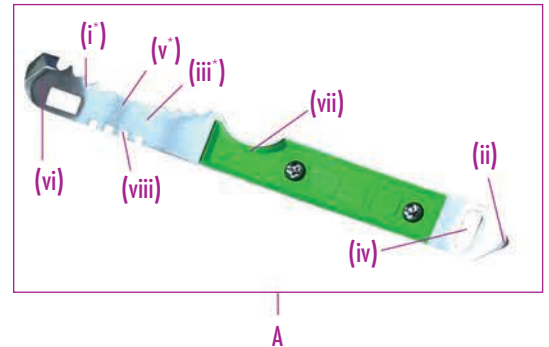
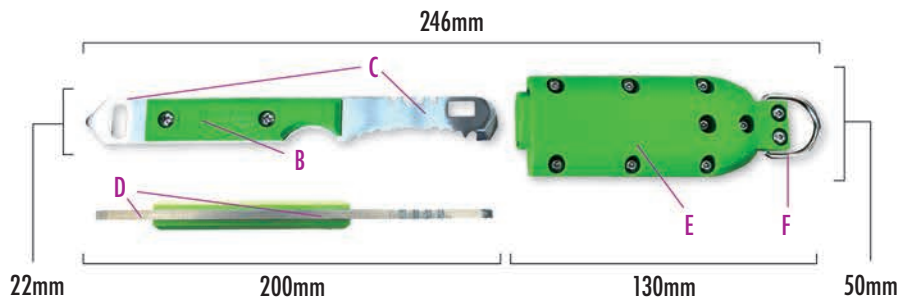
PRODUCT CODE	M8101	PRODUCT CODE	M8108	PRODUCT CODE	M8107
DIMENSIONS	37.5 x 55 x 23.75cm	DIMENSIONS	41.25 x 65 x 19.4cm	DIMENSIONS	37.5 x 61.25 x 26.25cm
COLOURS	Tactical Back, Red (pictured), High Visibility Yellow	COLOURS	Tactical Back, Red, High Visibility Yellow (pictured)	COLOURS	Tactical Back (pictured)



# TOOLS & ACCESSORIES



LIFELINE



## LIFELINE GEN3 FIRE NEW

GEN 3 FIRE is a portable, military-grade rescue tool. It has been specially engineered and precision crafted to be worn on the outside of everyday fire and rescue garments for fast, immediate access.

**A. 5+ TOOLS IN 1:** (i) Seatbelt cutter (ii) Aggressive window breaker (iii) Glass cutter (iv) O2 cylinder valve wrench (v) Wire cutters (vi) Box knife

**B. LARGE HANDLE AREA:** facilitates access and ease of use with a gloved hand. (vii) finger grip (viii) thumb grip.

**C. STAINLESS STEEL BLADE:** high end 440C, heat treated steel. Provides perfect balance of hardness and corrosion resistance.

**D. FULL TANG:** blade extends the entire length of the handle eliminating potential breaking points.

**E. HEAT RESISTANT THERMO PLASTIC HANDLE & SHEATH:** made from high visibility, DuPont Zytel® with a melting point of 300°C.

**F. HANGING LOOP:** D ring hanging loop for convenient attachment to fire garments, rescue garments, SCBA straps, bags and more.

**G. MADE IN THE USA,** from quality, locally sourced materials.

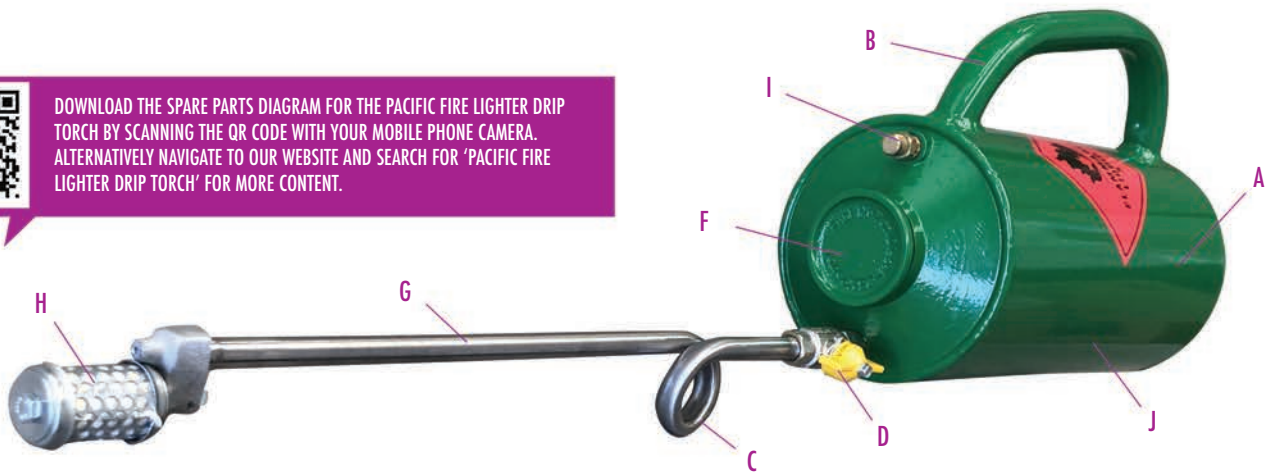
**H. CUSTOMISATION AVAILABLE.** Minimum order quantity and surcharges apply.



PRODUCT CODE	F-3SG
APPLICATION	Structural Firefighting Technical Rescue
DIMENSIONS	24.6 x 5 x 3.4cm / 0.390 kg



DOWNLOAD THE SPARE PARTS DIAGRAM FOR THE PACIFIC FIRE LIGHTER DRIP TORCH BY SCANNING THE QR CODE WITH YOUR MOBILE PHONE CAMERA. ALTERNATIVELY NAVIGATE TO OUR WEBSITE AND SEARCH FOR 'PACIFIC FIRE LIGHTER DRIP TORCH' FOR MORE CONTENT.



## PACIFIC FIRE LIGHTER DRIP TORCH

The Pacific Fire Lighter Fixed Wand Drip Torch is an excellent tool for burning out and fire line ignition.

**A. LARGE FUEL TANK.** 4.5L capacity. Constructed from extruded aluminium tube.

**B. DURABLE HANDLE.** Made from 25mm x 1.6mm aluminium then welded to the body.

**C. FUEL TRAP LOOP** prevents flame travelling up the wand internally and into the fuel storage tank.

**D. FUEL CONTROL TAP** allows operator to quickly and easily shut off the fuel supply when required.

**E. FLASH BACK VALVE** prevents ignited vapours travelling back up the wand into the fuel tank and causing an explosion (not visible in picture).

**F. LARGE FILL POINT** 55mm wide. Provides clear view into the tank to prevent overfilling. Sealed with die cast aluminium threaded bung and Viton O ring.

**G. FIXED WAND** eliminates wand 'spinning'. Includes flashback valve.

**H. SPECIALISED WICK** 12mm stainless steel and a fibreglass filled wick covered with galvanised perforated steel sheeting.

**I. BLEED SCREW** allows a measured amount of air into the tank so facilitating fuel flow through the wand.

**J. COLOUR** fuel tank powder coated shamrock green in line with AFAC approved colouring for fuel storage containers.

**K. MADE IN AUSTRALIA.**

PRODUCT CODE	BCRPFL FW G
APPLICATION	Wildland Firefighting
CERTIFICATION	AS/NZS 2906:2001

**Quick Fist.**  
ONE PIECE RUBBER CLAMP

## QUICK FIRST® ORIGINAL

Mounts easily to keep shovels, axes, hoses and other tools securely in place.



PRODUCT CODE QF10012

WORKING LOAD 11kgs

OBJECT DIAMETER 25-37mm

**Quick Fist.**  
ONE PIECE RUBBER CLAMP

## SUPER QUICK FIRST® CLAMP

An ideal storage solution for air tanks, fire extinguishers, nitrous oxide tanks, scuba tanks and more.



PRODUCT CODE QF20023

WORKING LOAD 23kgs

OBJECT DIAMETER 64-240mm

**Quick Fist.**  
ONE PIECE RUBBER CLAMP

## MINI QUICK FIRST® CLAMP

Great for mounting fishing rods, wire bundles, small flashlights, hand tools, brooms, and poles. Can also be used to mount objects to a pipe or round tubing.



PRODUCT CODE QF30055

WORKING LOAD 11kgs

OBJECT DIAMETER 16-32mm

**Quick Fist.**  
ONE PIECE RUBBER CLAMP

## QUICK FIRST® LONG ARM CLAMP

A solution for tools with handles or equipment that coils - like hoses, cords or rope.



PRODUCT CODE QF40023

WORKING LOAD 23kgs

OBJECT DIAMETER 13-114mm

**Quick Fist.**  
ONE PIECE RUBBER CLAMP

## QUICK FIRST® XL CLAMP

The largest clamp in the range - two straps hold objects with a diameter of 380mm and supports 68kg.



PRODUCT CODE QF60023

WORKING LOAD 68kg

OBJECT DIAMETER up to 380mm

**Quick Fist.**  
ONE PIECE RUBBER CLAMP

## GO BETWEEN QUICK FIRST® CLAMP

Designed to hold tools and equipment with a diameter between 44mm to 73mm.



PRODUCT CODE QF80023

WORKING LOAD 23kgs

OBJECT DIAMETER 44-77mm

**Quick Fist.**  
ONE PIECE RUBBER CLAMP

## NOZZLE QUICK FIRST® CLAMP

Holds objects with a diameter of 70mm - 83mm with a safe working load of 23kgs.



PRODUCT CODE QF50052

WORKING LOAD 23kgs

OBJECT DIAMETER 70-83mm

## GENFO FIREFIGHTING BACKPACK

GENFO is a collapsible bushfire knapsack designed to assist firefighters approaching wildland fires.

Ideal for mop-up, control and extinguishing tasks for forest fires.

**MATERIAL:** Thermally welded flexible tank manufactured in canvas reinforced with synthetic fabric. Webbed straps and handles.

**CAPACITY:** 18 litres.

**DUAL FUNCTION:** jet (reach of 8m) & fog (reach of 3m).

**HANDLES & STRAPS:** One central top handle, two padded backpack straps and one waist strap with quick release buckle.

**INLET:** 100mm diameter.



PRODUCT CODE I200549

DIMENSION 49 x 65cm / 2.2kgs (empty)

APPLICATION Wildland Firefighting  
Home Defence



## PULASKI AXE

A combination axe and mattock, ideal for chopping, digging fire lines in hard or soft soils.

It features durable and lightweight fibreglass handle and precision ground and tempered cutting edges.



PRODUCT CODE	FHUPUL-5
DIMENSIONS	88 x 32 x 10cm / 3kg
APPLICATION	Wildland Firefighting

## STANDARD FIRE AXE

Used for multiple wildland firefighting applications including chopping, battering, door stop and more.

The standard fire axe features durable and lightweight fibreglass handle and precision ground and tempered cutting edges.



PRODUCT CODE	FHUFAP-6
DIMENSIONS	91 x 30 x 4cm / 4kgs
APPLICATION	Firefighting

## HOOLOGAN TOOL STANDARD CLAW

Hooligan tools are traditionally used in forcible entry situations.

Head and standard claw are forged from heat treated, high alloy steel then machine sharpened.

Body is a stress proof bar, machine grooved to create a non-slip grip.



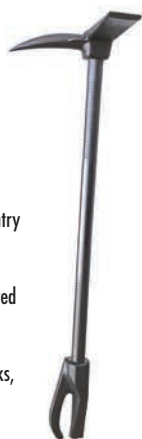
PRODUCT CODE	M22-000600
DIMENSIONS	82 x 20 x 20cm / 6kgs
APPLICATION	Forcible Entry

## HOOLOGAN TOOL METAL CUTTING CLAW

Designed to pound, puncture, pry, twist, and cut all types of barriers in forcible entry situations.

Body is a stress proof bar, machine grooved to create a non-slip grip.

Claw opening is parallel and fits over locks, hasps and many door bars.



PRODUCT CODE	M22-000622
DIMENSIONS	82 x 20 x 20cm / 6kgs
APPLICATION	Forcible Entry

## FIBREGLASS HD BAR

Used mainly where forcible entry is required. The non-conductive, fibreglass handle makes it a great solution for applications that may be electrified and ideal for Hybrid automobiles.

Head and standard claw are forged from heat treated, high alloy steel, then machine sharpened.



PRODUCT CODE	FHUHDNC-30
DIMENSIONS	82 x 20 x 20cm / 5kgs
APPLICATION	Forcible Entry

## RUBBER WHEEL CHOCK

Wheel chocks are a must have for any loading dock environment.

This moulded rubber wheel chock is sloped to increase holding capacity and includes a rope strap.



PRODUCT CODE	PAC DH-WC-1
DIMENSIONS	26 x 16 x 19cm / 3kg
CERTIFICATION	Meets OSHA requirements

## TRAFFIC CONE

Used on roads or footpaths to temporarily redirect traffic in a safe manner.

Made from high visibility PVC, Pac Fire traffic cones feature a rubber base and an Oralite® Reflexite® reflective strip.

Two heights available small PAC DH-TC-45, 45cm tall and large PAC DH-TC-70, 70cm tall.



PAC DH-TC-70

PRODUCT CODE	PAC DH-TC-45, PAC DH-TC-70
CERTIFICATION	AS 1742

## AC HOT STICK

Provides early warning that high voltage AC is nearby. Hot Stick will give early audible and visual warning signalling dangerous voltages without the need to contact the surface carrying the current.

Powered by 4 x AA alkaline batteries.



PRODUCT CODE	HSBN900502
DIMENSIONS	56 x 5 x 5cm / 0.3kgs

## RESQME® CAR ESCAPE TOOL

ResQMe® is a 2 in 1, car escape tool keychain. Designed to cut a jammed seatbelt and break a side window in your car.

Made in the USA from durable ABS plastic and stainless steel components.



PRODUCT CODE	ZYTX010YE
DIMENSIONS	7 x 3 x 2cm / 0.04kgs

# TOOLS & ACCESSORIES



## JERRY CAN UNLEADED RED

Available in 5L PRO1095, 10L PRO1096 & 20L PRO1097. Matching ID tag PRO1040 included with every Jerry Can.

PRODUCT CODE PRO1095, PRO1096, PRO1097



## JERRY CAN ETHANOL ORANGE

Available in 5L PRO1171, 10L PRO1160 & 20L PRO1150. Matching ID tag PRO1051 included with every Jerry Can.

PRODUCT CODE PRO1171, PRO1160, PRO1150



## JERRY CAN DIESEL OLIVE YELLOW

Available in 5L PRO1172, 10L PRO1161 & 20L PRO1151. Matching ID tag PRO1041 included with every Jerry Can.

PRODUCT CODE PRO1172, PRO1161, PRO1151



## JERRY CAN 25:1 TWO STROKE - BOTTLE GREEN

Available in 5L PRO1173, 10L PRO1162 & 20L PRO1152. Matching ID tag PRO1042 included with every Jerry Can.

PRODUCT CODE PRO1173, PRO1162, PRO1152



## JERRY CAN DRIP TORCH - SHAMROCK GREEN

Available in 5L PRO1174, 10L PRO1163 & 20L PRO1153. Matching ID tag PRO1044 included with every Jerry Can.

PRODUCT CODE PRO1174, PRO1163, PRO1153



## JERRY CAN CHAIN & BAR OIL - BRIGHT BLUE

Available in 5L PRO1176, 10L PRO1165 & 20L PRO1155. Matching ID tag PRO1045 included with every Jerry Can.

PRODUCT CODE PRO1176, PRO1165, PRO1155



## JERRY CAN KEROSENE - POWDER BLUE

Available in 5L PRO1177, 10L PRO1166 & 20L PRO1156. Matching ID tag PRO1050 included with every Jerry Can.

PRODUCT CODE PRO1177, PRO1166, PRO1156



## JERRY CAN 50:1 TWO STROKE - PIPELINE GREY

Available in 5L PRO1179, 10L PRO1168 & 20L PRO1157. Matching ID tag PRO1043 included with every Jerry Can.

PRODUCT CODE PRO1179, PRO1168, PRO1157



## JERRY CAN OIL BLACK

Available in 5L PRO1180, 10L PRO1169 & 20L PRO1158. Matching ID tag PRO1046 included with every Jerry Can.

PRODUCT CODE PRO1180, PRO1169, PRO1158



## JERRY CAN DETO-STOP - GREEN

Available in 5L PRO0967, 10L PRO0966 & 20L PRO0965.

PRODUCT CODE PRO0967, PRO0966, PRO0965



## JERRY CAN DETO-STOP - RED

Available in 5L PRO1094-1, 10L PRO0973 & 20L PRO0972.

PRODUCT CODE PRO1094-1, PRO0973, PRO0972



## JERRY CAN REPLACEMENT RUBBER SEALS

Replacement seals for Pro-Quip Jerry Cans. Pack of 3.

PRODUCT CODE PRO0995C





## JERRY CAN POURER WITH CLIP

Jerry can pourer for metal ProQuip Jerry Cans.



## JERRY CAN POURER - UNLEADED

The unleaded specific Jerry Can pourer allows faster, safer pouring.



## JERRY CAN POURER - DIESEL

The diesel specific Jerry Can pourer allows faster, safer pouring.



## METAL ID FUEL TAGS

Metal Jerry Can ID Tags match the Pro-Quip range of Metal Fuel Cans. Tag measures 7 x 3.5 x 0.2cm. Available in Unleaded PRO1040M, Drip Torch PRO1044M and Oil PRO1046M.

PRODUCT CODE	PRO0993C	PRODUCT CODE	PRO13300	PRODUCT CODE	PRO23300	PRODUCT CODE	PRO1040M, PRO1044M, PRO1046M
--------------	----------	--------------	----------	--------------	----------	--------------	------------------------------



## KESTREL 3000 WEATHER METER

**FUNCTIONS:** temperature, relative humidity, heat stress index, dew point, wind chill and wind speed.

**POWERED BY:** one lithium CR2032 battery  
**DROP TESTED** to MIL-STD-810G  
**DATA HOLD FUNCTION.**

**INCLUDED IN PACKAGE:** lanyard and slide cover.

**INGRESS PROTECTION IP67:** Kestrel 3000 is waterproof and floats.

**MADE IN THE USA.**



## KESTREL 3550 'FIRE' WEATHER METER

**FUNCTIONS:** temperature, relative humidity, wind direction, wind speed and condition alarms.

**POWERED BY:** one lithium CR2032 battery  
**DROP TESTED** to MIL-STD-810G  
**DATA HOLD FUNCTION.**

**INCLUDED IN PACKAGE:** lanyard and slide cover.

**INGRESS PROTECTION IP67:** Kestrel 3550 is waterproof and floats.

**MADE IN THE USA.**



## KESTREL 3550 'SPRAYING' WEATHER METER

**FUNCTIONS:** temperature, relative humidity, wind direction, wind speed, delta-t and temperature-humidity index.

**POWERED BY:** one lithium CR2032 battery  
**DROP TESTED** to MIL-STD-810G  
**DATA HOLD FUNCTION.**

**INCLUDED IN PACKAGE:** lanyard and slide cover.

**INGRESS PROTECTION IP67:** Kestrel 3550 is waterproof and floats.

**MADE IN THE USA.**

MK3000 SLIDECOVER



MK3550FW SLIDECOVER



MK3550AG SLIDECOVER



MK0801 REPLACEMENT IMPELLER

PRODUCT CODE	MK3000	PRODUCT CODE	MK3550FW	PRODUCT CODE	MK3550AG
DIMENSIONS	12 x 4.5 x 2cm / 0.10kg	DIMENSIONS	12 x 4.5 x 2cm / 0.10kg	DIMENSIONS	12 x 4.5 x 2cm / 0.10kg
CERTIFICATION	Ingress Protection IP67 NEMA-6 CE marked RoHS and WEEE compliant	CERTIFICATION	Ingress Protection IP67 NEMA-6 CE marked RoHS and WEEE compliant	CERTIFICATION	Ingress Protection IP67 NEMA-6 CE marked RoHS and WEEE compliant

QLFA



## LAY PACK

QuickLay Packs have been specifically designed to provide a solution to the standard hose lay requirement.

The "Lay Pack" has been designed to transport and deploy supply line hose between the water source and attack line hose.

**DEPLOYMENT:** Flaked deployment. Lays the hose straight from the pack avoiding tangles and kinks.

**CONFIGURATION:** for supply line hose up to 45mm in diameter. Includes space for hose spanners and other attachments.

**HANDLES:** Two carry handles. One shoulder strap with adjustable, padded slider.

**COLOUR:** Blue rip stop, water resistant nylon to indicate its role in the hose lay process.

**LIGHTWEIGHT.**

QLFA



## ATTACK PACK

The "Attack Pack" has been designed to transport and deploy attack line hose in the 'Cleveland load' with a pre-connected fire fighting nozzle and adapters/reducers between the supply line hose and fire.

Provides an ideal solution for restricted spaces like high-rise fire stairs, a terrace court-yard or a balcony.

**DEPLOYMENT:** Coiled deployment. Rapidly coils the hose straight from the pack avoiding tangles and kinks.

**CONFIGURATION:** for attack line hose up to 45mm in diameter. Includes space for hose spanners and other attachments.

**HANDLES:** Two carry handles. One shoulder strap with adjustable, padded slider.

**COLOUR:** Red rip stop, water resistant nylon to indicate its role in the hose lay process.

**LIGHTWEIGHT.**



PRODUCT CODE QFALP-STD-45

DIMENSIONS 100 x 30 x 30 / 1.70kgs



PRODUCT CODE QFAAP-STD-45

DIMENSIONS 100 x 30 x 30 / 1.70kgs



## HOSE RAMP

Protect hose up to 70mm in diameter from vehicle damage.

**CONSTRUCTION:** Heavy duty reinforced rubber.

**HOSE DIAMETER:** 70mm.

**REFLECTORS:** four silver reflective stripes.

**EXPANDABLE:** join multiple hose ramps together for extra width using bone connectors.

PRODUCT CODE PAC RAMP75

DIMENSIONS 60.9 x 38.4 x 9cm / 13.5kgs



## TURBOKADOR 500

Hand nozzle with selectable flow rate.

**FLOW RATE:** 115/225/360/475.

**INLET:** Female 1.5" BSP

PRODUCT CODE POK09718 475LPM

DIMENSIONS 31.2 x 26.6 x 12.6cm / 2.5kg



## "BIPOK" 2 WAY DIVIDER

"Bipok" dividers are equipped with 2 ball valve shutoffs, one carrying handle and stabilising feet. There is almost no pressure loss thanks to its full waterway.

**INLET:** 1 x 65mm (2.5") Storz fitting.

**OUTLET:** 2 x 38mm (1.5") Storz fitting.

PRODUCT CODE POK07415 NEN38

DIMENSIONS 22.6 x 18.3 x 17.1cm / 2.41kg





# **CLEANING & RESPONDER HEALTH**



## MSA BRISTOL NANO FLEX PBI®

The NanoFlex particulate blocking flash hood provides the comfort and protection you would expect from MSA Bristol while striking the perfect balance between mitigating heat stress and filtering harmful particulates found on the fire ground.

MSA Bristol's revolutionary NanoFlex flash hoods have been proven to be 99.8% successful at filtering harmful particulates. Blended with PBI® fibres, NanoFlex PBI® hoods also deliver superior flashover protection to the wearer.

**FABRIC:** PBI® and Kevlar® fibres with viscose in a knitted fabric featuring Dupont NanoFlex fabric.

**DESIGN:** Separate head with sewn on back and front bib. Back of head ends at the nape of the neck for improved fit and comfort.

**CONSTRUCTION:** All head and bib seams are sewn with a flat lock stitch.

**THREAD:** 100% Nomex®

**LABEL:** Each hood is labelled with a FR label with all four edges sewn to the hood, identifying material contents, certification, lot#, date of manufacture, and care instructions.

**THL:** 438 (W/m2)



## MSA BRISTOL NANO FLEX NOMEX

Recent studies into firefighter health and well-being suggest that the flash hood is the most penetrable piece of protective clothing worn by the firefighter, a particularly troubling finding considering the face and neck have been identified as areas of significant dermal exposure to potential carcinogens.

MSA Bristol's revolutionary NanoFlex flash hoods have been proven to be 99.8% successful at filtering harmful particulates. Blended with Nomex® fibres, NanoFlex Nomex hoods provide excellent protection against heat and flame.

**FABRIC:** Dupont's Nomex® and Kevlar® fibres with viscose in a knitted fabric featuring Nomex® NanoFlex.

**DESIGN:** Separate head with sewn on back and front bib. Back of head ends at the nape of the neck for improved fit and comfort.

**CONSTRUCTION:** All head and bib seams are sewn with a flat lock stitch.

**THREAD:** 100% Nomex®

**LABEL:** Each hood is labelled with a FR label with all four edges sewn to the hood, identifying material contents, certification, lot#, date of manufacture, and care instructions.

**THL:** 469 (W/m2)



## LIFE LINERS PARTICULATE BLOCKING FLASH HOOD

The Life Liners particulate blocking flash hood is designed to deliver both comfort and protection while blocking potentially harmful carcinogens from entering the body via absorption through the skin.

**FABRIC:** Outer Layer: 49% Kermel/ 49% Lenzing FR/2% Spandex. Inner Layer: Stedair® Prevent.

**DESIGN:** Two piece design with 15cm front with 20cm back. Separate head with sewn on back and front bib. Back of head ends at the nape of the neck for improved fit and comfort. Easy-Seal Face opening that goes on easy and seals tight. Sewn with 1.25cm thick elastic encapsulated in hood material.

**CONSTRUCTION:** Two layer construction. All head and bib seams are sewn with a flat lock stitch. 3.8cm binding sewn to hem through folder with a three thread cover stitch to create a 1.25cm finished bound hem.

**THREAD:** 100% Nomex®

**LABEL:** Each hood is labelled with an FR Label with all four edges sewn to the hood, identifying material contents, UL certification, lot#, date of manufacture, and care instructions.

<b>PRODUCT CODE</b>	BRISTOLHOOD7	<b>PRODUCT CODE</b>	BRISTOLHOOD6	<b>PRODUCT CODE</b>	KL200
<b>APPLICATION</b>	Structural Firefighting	<b>APPLICATION</b>	Structural Firefighting	<b>APPLICATION</b>	Structural Firefighting
<b>SIZES</b>	Medium, Large	<b>SIZES</b>	Medium, Large	<b>SIZES</b>	Small, Medium, Large
<b>COLOUR</b>	Tan	<b>COLOUR</b>	Navy Blue	<b>COLOUR</b>	Tan, Navy Blue (pictured)
<b>CERTIFICATION</b>	EN 13911:2017	<b>CERTIFICATION</b>	EN 13911:2017	<b>CERTIFICATION</b>	NFPA 1971-2018 UL





## DOT ALL ROUND NEXT GEN BAG

The DOT all purpose bag is a storage device for contaminated protective clothing. The product also contains a protective compartment for storage of clean clothes. It is an encapsulation system developed for fire and rescue personnel – reducing exposure from contaminated PPE during handling and transport. The DOT bag is easy to work with, safe and specially adapted for fire and rescue vehicles.

**MATERIAL:** Polyester reinforced polyvinyl chloride, black.

**HANDLES:** Webbed handles on the outside of the bag when zipped closed. When expanded, top of the bag folds over and is secured by quick release clip, creating a carry handle.

**OPENING:** Centralised DPTI zipper opens bag completely to facilitate easy loading.

**POCKETS:** One complete separated, internal pocket. Measures 46cm x 46cm.

**EASY TO CLEAN:** material will wipe clean or can be machine washed in 40°C water.



**PRODUCT CODE** DOT-01 NEXTGEN

**SIZE** 48 x 90cm / 1.85 empty.

**CERTIFICATION** Endorsed by Healthy Firefighters



## DOT EXTRA LARGE EQUIPMENT BAG

The classic DOT equipment bag in an extra large size. DOT equipment is a storage device for contaminated protective clothing. It is an encapsulation system developed for fire and rescue personnel – reducing exposure from contaminated PPE during handling and transport. DOT bags are easy to work with, safe and specially adapted for fire and rescue vehicles.

**MATERIAL:** Polyester reinforced polyvinyl chloride, black.

**HANDLES:** Webbed handle on front of the bag. Top of the bag folds over and is secured by quick release clip, creating a carry handle.

**OPENING:** Centralised DPTI zipper opens bag completely to facilitate easy loading.

**CONTAMINATION INDICATOR:** Reversible fold over bag closure acts as a contamination indicator. Green for safe, red for soiled.

**EASY TO CLEAN:** material will wipe clean or can be machine washed in 40°C water.



**PRODUCT CODE** DOT-02XL

**SIZE** 70 x 85cm / 1.39kg empty.

**CERTIFICATION** Endorsed by Healthy Firefighters



## DOT SYSTEM SEALED BAG

DOT Sealed is an encapsulating bag, welded with TPU and a gas-tight zipper. Extra durable for extreme conditions. The DOT Sealed bag features an outer compartment for storage of other items away from potentially contaminated PPE/C.

**MATERIAL:** Thermoplastic polyurethane coated nylon, yellow.

**HANDLES:** Two webbed carry handles with contamination indicator wrap secured with hook and loop. One side handle with industrial plastic grip. One shoulder strap with padded with thermoplastic polyurethane coated nylon slider.

**OPENING:** welded with TPU and a gas-tight zippers. Includes sturdy 4cm long zip puller.

**POCKETS:** One external pocket completely separated from the main part of the bag. Measures 30cm x 15cm.

**WINDOW:** 7 x 7.5cm clear document window made from PVC.

**CONTAMINATION INDICATOR:** Reversible handle wrap acts as contamination indicator. Green for safe, red for soiled.

**EASY TO CLEAN:** material will wipe clean or can be machine washed in 40°C water.



**PRODUCT CODE** DOT-S-01

**SIZE** 45 x 80cm / 1.6kgs empty.

**CERTIFICATION** Endorsed by Healthy Firefighters



## RESPONDER WIPES

Responder Wipes® have been designed and formulated specifically to meet firefighters unique needs.

Infused with Micellar Water, the wipes effectively clean dirt, oil, soot and other hydrocarbons from the skin. Micelles not only removes toxins and contaminants but also returns much needed hydration to the skin that is lost while working in hot and demanding conditions.

Their convenient packaging options reduce waste and makes Responder Wipes® perfect for use while still attending an incident.

**SPECIALLY FORMULATED:** Thick 80gsm wipes that do not shred, tear or ball includes Micellar Water, an innovative cleansing compound that effectively dissolves hydrocarbons while returning much needed hydration to parched skin.

**SIZE:** Extra large RW13160, a carton of 16 Individually packaged, 30 x 60cm wipes. Medium RW13355, a carton of 16 Individually packaged, 20 x 30cm wipes. Small RW13460 a resealable, dispenser pack of 20, 20 x 20cm wipes.

**THICKNESS:** 80gsm wipes that do not shred, tear or ball.

**SHELF LIFE:** 3 years.



## SC-14 ALL-PURPOSE CLEANER

"Clean" doesn't necessarily mean safe.

SC-14 is all purpose cleaner and degreasing agent that not only removes dirt, grease and grime – but also cleans away contaminates and carcinogens.

The specialised formulation removes dirt and contaminants without compromising the integrity of the item your cleaning. It's non-corrosive formula is free from sodium hydroxide and sodium metasilicate, common ingredients in other cleaning solutions which can permanently dull or damage painted surfaces, metals, glass and decals.

**SPECIALLY FORMULATED:** Cleans away potentially harmful contaminates and carcinogens. Effective on grease, grime soil and hydrocarbons. Recommended for routine cleaning of helmets, equipment and surfaces.

**SIZE:** 946ml spray bottle.

**ENVIRONMENTALLY FRIENDLY,** biodegradable and non-corrosive formula.

**RECOMMENDED FOR:** Helmets, trucks & equipment, diamond plate surfaces, SCBA tanks, extraction equipment, chain saws, nozzles, hoses, thermal imaging cameras, fire station walls and cabinets.



## CITROSQUEEZE® TECHNICAL DETERGENT

NFPA 1851 compliant CITROSQUEEZE® is the recommended technical detergent available for safely cleaning oil, soot, grease and other contaminants from all types of PPC and FR clothing.

CITROSQUEEZE® has been used widely, throughout the industry for over 20 years. In that time over 2 million sets of garments have been thoroughly cleaned without a single incidence of damage to the ensemble.

**SPECIALLY FORMULATED:** High performance cleaning, effective on dirt, grime and hydrocarbons. Recommended for routine cleaning of all PPC and FR clothing as well as the soft components inside helmets.

**SIZE:** FS-C-032 946ml spray bottle for pre-treating and a FS-C-001 3.78l jug for use as an in wash detergent.

**ENVIRONMENTALLY FRIENDLY,** biodegradable formula.

**TESTED AND APPROVED BY THE INDUSTRY LEADING TEXTILE MANUFACTURERS:** MSA Bristol, Dupont - for cleaning Nomex®, Southern Mills - for cleaning PBI® and Kevlar® fabrics, W.L. Gore & Associates for cleaning Gore-Tex®, 3M™ Products - for cleaning specific SCOTCHLITE™ Retroreflective Fire Coat Trims.

**PRODUCT CODE** RW13160, RW13460, RW13355

**SIZE** Extra Large 30 x 60cm, Medium 20 x 20cm, Small 20 x 30cm.

**CERTIFICATION** Endorsed by Healthy Firefighters

**PRODUCT CODE** SC-14F-032

**SIZE** 946ML spray bottle

**CERTIFICATION** Tested and approved by Pacific Helmets

**PRODUCT CODE** FS-C-032, FS-C-001

**SIZE** 946ML spray bottle, 3.78l jug

**CERTIFICATION** NFPA 1851





WHAT IS  
PAC+CARE?





## WE ARE PAC+CARE.

Fire and Emergency Services have a responsibility to supply their employees with Personal Protective Equipment and Clothing (PPE/C) which meets the necessary standards and performance requirements and have in place systems which ensure that personal protective gear is regularly monitored, inspected and maintained. Above all else, each item of protection must be safe for use throughout its operational life.

Developed exclusively with partners Pacific Helmets and MSA Bristol, PAC+CARE is designed to provide a comprehensive facility through which Australian Workplace Health and Safety and Occupational Health and Safety regulations are met.



## WHAT SETS PAC+CARE APART?

**EFFECTIVE CLEANING.** During fires, PPE/C can become contaminated with a wide range of chemical, biological and particulate contaminants that are hazardous. If not removed properly, these contaminants could significantly affect personal protection and the PPE/C's longevity but more importantly, have adverse effects on firefighter health.

At PAC+CARE we target the most prevalent and persistent contaminants in firefighter protective wear, combat these with best practice methodology, state of the art washing and drying technology while utilising the latest chemical inactivation. This yields a significant reduction in contaminant load, mitigating the effects of exposure to firefighters and ensures Service's PPE/C has a prolonged operational life.

**VALIDATING OUR CLEANING.** PAC+CARE commissions NATA accredited laboratories to assess the efficiency of their laundering process. This is achieved by sampling test fabric soiled with predetermined contaminants under laboratory conditions and benchmarking these results against a clearly defined performance criteria. Services can be assured that PAC+CARE's cleaning process is independently verified and certified as being of the highest quality and is continuously being confirmed by internationally recognised organisations.

**LAUNDRY FILTRATION SYSTEM.** PAC+CARE's filtration system is designed to ensure that contaminants removed from clothing and equipment do not end up in precious water ways. PAC+CARE's state of the art filtration system treats water to industry-best standard by removing contaminants associated with firefighting.

**BEST PRACTICE INSPECTION.** Early identification of damage to protective clothing and equipment is essential to preventing degradation and identifying early warning signs that the item is unfit for purpose.

Every item that passes through PAC+CARE is inspected using a comprehensive manufacturer's inspection and/or methods complying with NFPA 1851:2014 standard, which includes the testing of moisture barrier and thermal liner integrity in structural firefighting garments.

**QUALITY REPAIRS.** Carrying out repairs is fundamental to ensuring clothing and equipment is returned safe, fit for operational purpose and compliant with the standard it was certified to. PAC+CARE is a Verified Organization and at the same time trained by Bristol Uniforms and Pacific Helmets to carry out all repairs in accordance with the manufacturer's construction methods, using original components/material and to a quality level and standard approved by them.

**QUALITY ASSURANCE.** With PAC+CARE's ISO 9001: 2015 and ISO 14001: 2015 certifications, Fire and Emergency Services can be assured that PAC+CARE's Quality Management Systems and Environmental Management practices are independently verified and certified as being of the highest quality on a continuous basis by internationally recognised certification bodies.



▶ PAC+CARE'S STATE OF THE ART FILTRATION SYSTEM



▶ MIELE ELECTRICALLY HEATED WASHING EXTRACTORS

[illegible]



## PAYMENT TERMS

1. The establishment of a credit account is at the discretion of Pac Fire.
2. Standard terms for credit accounts is payments within 30 days.
3. Pac Fire may close or put a hold on credit accounts at any time.
4. Pac Fire reserves the right to close any accounts which have not been used in 12 months.
5. If a credit account has not been established, Pac Fire will require payment for goods prior to shipment. Payment can be made via credit card (Visa or Master Card), electronic funds transfer (EFT) or cheque.
6. If payment is made by EFT or cheque, funds must be cleared into the Pac Fire bank account before goods can be dispatched. For the fastest possible turn around and to secure stock at the point of order, please select Credit Card as your payment method.
7. Gift vouchers are available and exclusive to Pac Fire Online. The value of the voucher can be spent in one, or over several online transactions. If the value of the order is more than the gift voucher amount Pac Fire Online will only require payment for the difference using one of our standard payment options. As always, Pac Fire recommends using the Credit Card / PayPal option to settle the balance for the fastest possible turn around on your Pac Fire Online order.

## PRICING

8. Prices are subject to change without notice.
9. Prices advertised at Pac Fire Online exclude GST and freight charges.

## FREIGHT

10. Pac Fire will arrange freight of goods unless a specific carrier or mode of transport has been nominated by the purchaser.
11. Pac Fire's responsibility for the delivery of the goods ends when the elected freight provider has taken possession of the goods

## INVOICING

12. It is standard practice for Pac Fire to send a physical copy of the invoice with the goods to the shipping address as noted on the order. If this is not suitable for your situation please use the notes section during checkout to specify your preferred invoice delivery method.

## INSPECTION

13. Customers should examine the products upon receipt and Pac Fire shall not be responsible for misdelivery, shortage, defect or damage to the products unless the purchaser notifies Pac Fire within seven (7) days from the date of delivery.

## RETURNS

### 14. CHANGE OF MIND

Pac Fire may, in its absolute discretion, accept the return of standard products to the credit of the purchaser provided prior written approval from one of its authorised representatives is obtained. Goods are to be returned to the nearest Pac Fire branch, unused, undamaged and in original packaging, at the expense of the purchaser within fourteen days (14) of taking receipt of the goods.

### 15. INCORRECT SUPPLY

Pac Fire will correct any issues relating to the incorrect supply of goods as quickly as possible. If the error is deemed to have occurred on Pac Fire's side of the transaction, return transport and replacement goods can be issued or the order can be cancelled to the credit of the customer.

Note that for special products, such as non-stock helmets, an additional wait time while the item is manufactured may be unavoidably incurred.

### 16. FAULTY GOODS

Pac Fire warrants our products will be free from any defect in materials or workmanship upon purchase.

If found on inspection by an authorised representative from Pac Fire a product failure caused by a defect in material or manufacture, Pac Fire will either repair or replace the Product. If the original item of purchase is unable to be repaired or resupplied, Pac Fire will supply an equivalent product or pay for a replacement. This warranty is void when found, after inspection the Product has been used in a manner not in accordance with Pac Fire or our partners recommendations, usage instructions or has been subject to misuse.

Our goods come with guarantees that cannot be excluded under the Australian Consumer Law. You are entitled to a replacement or refund for a major failure and for compensation for any other reasonably foreseeable loss or damage. You are also entitled to have the goods repaired or replaced if the goods fail to be of acceptable quality and the failure does not amount to a major failure.

Pac Fire offers this Warranty separately from any other Warranties implied under the Trade Practices Act. This Product Warranty does not undermine any rights a consumer may exercise under the Trade Practices Act or complimentary state based legislation.

## WARRANTY APPLICATION

17. This Warranty applies only:

- a. To a Product sold to a consumer or distributor by Pac Fire
- b. If the Product is used in accordance with Pac Fire's (and our partners) recommendations and/or usage instructions.

## WARRANTY EXCLUSIONS

This Warranty will not apply if any of the following occurs:

- a. The Product's malfunction or failure to perform to Pac Fire's specifications results from:
  - i. deliberate or accidental damage; or
  - ii. neglect or modification; or
  - iii. incorrect voltage or a power surge; or
  - iv. use of non-genuine replacement parts or accessories.
- b. Any wear parts included in the Product, (for example including but without limitation: helmet headband, comfort pads, screws and fasteners, etc), reaches the end of their service life;
- c. The Product reaches the natural conclusion of its service life (for example including but without limitation: disposable dust masks etc

## NON-GENUINE ITEMS

Use non-genuine replacement parts in the Product may result in damage to the Product and may invalidate this Warranty.

## TRADEMARKS

3M and SCOTCHLITE are trademarks of the 3M Company.

DuPont, Kevlar, Nomex and Nomex 360 are trademarks or registered trademarks of E.I. du Pont de Nemours and Company.

HAINSWORTH is a trademark or registered trademark of A W Hainsworth & Sons Limited.

PBI, PBI LP and PBI MAX are trademarks or registered trademarks of PBI Performance Products, Inc.

OTEP and DSVS are trademarks or registered trademarks of Pacific Helmets (NZ) Ltd.

GORE, GORE-TEX, WINDSTOPPER, CROSSTECH, DRYLOCK, AIRLOCK, Fireblocker and PARALLON are trademarks or registered trademarks of W. L. Gore & Associates, Inc.

GATORLITE and Vizion are trademarks or registered trademarks of Underwater Kinetics, LP.

Eflare is a trademark or registered trademark of Eflare Corporation Pty Ltd.

Quick Fist is a registered trademark of End Of The Road, Inc.

ResQMe is a registered trademark of Laurent Colasse.

CITROSQUEEZE is a registered trademark of Solutions Safety Products & Services, Inc.

Red Rack is a trademark or registered trademark of Groves Inc.

AIRWAY, DEEP STUFF, MEDKIT, Meret, M.U.L.E., OMNI, RECOVER, TS2 Ready, X2 and XTRA FILL are trademarks or registered trademarks of Cramer-Decker Industries.

Glide Ice is a trademark of Safety Components, Inc..

Zytron, Frontline, DuraChem, Lantex and ProVent registered trademarks of Kappler, Inc.

Blowhard is a trademark of The BlowHard Company.

Solberg and Fire-Brake are trademarks of McWane Luxembourg IP S.a.r.l.

Phos-Chek is a trademark of Perimeter Solutions LP.

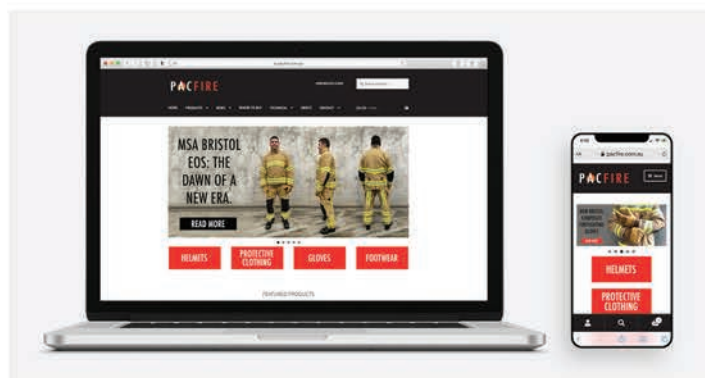
Dot System and Healthy Firefighters are registered trade marks of Humanice A.B.

Kestrel is a trademark of Nielsen-Kellerman Co.

LifeTec is a registered trademark of LifeTec Pty Ltd.

ProQuip is a trademark of PQI Pty Ltd.

Life Liners is a registered trademark of Stanfield's Limited.



^ BROWSE AND SHOP WITH PAC FIRE ONLINE AT [WWW.PACFIRE.COM.AU](http://WWW.PACFIRE.COM.AU)

# AUSTRALIA'S MOST TRUSTED FIREFIGHTING HELMETS, CLOTHING & EQUIPMENT



**1300 731 800**

## OUR LOCATIONS

QUEENSLAND BRANCH  
62 Link Dr

YATALA QLD 4207  
AUSTRALIA

PH: +61 7 3441 7100

SOUTH AUSTRALIA BRANCH  
Unit 3, 53 Cnr Galway  
& Barnes Ave  
MARLESTON SA 5033  
AUSTRALIA

PH: +61 8 8297 1477

NEW ZEALAND BRANCH  
305 Heads Road

WHANGANUI 4541  
NEW ZEALAND

PH: +64 6 344 7391

■ [SALES@PACFIRE.COM.AU](mailto:SALES@PACFIRE.COM.AU) ■ [PACFIRE.COM.AU](http://PACFIRE.COM.AU)   