



EOS STRUCTURAL FIREFIGHTING ENSEMBLE

EOS is the latest structural firefighting ensemble design from leading garment manufacturer MSA Bristol. MSA Bristol EOS builds on the success of XFlex and the UK Collaborative Framework ranges, retaining popular ergonomic sports styling and advanced protection from quality technical fabrics.

The new design and features provide a high level of protection against emerging risks faced by firefighters with emphasis on particulate protection and cleaning efficiency.

JACKET

- A.** Distinctive sports styling. Ergonomic and flexible design.
- B.** Waist hem curved up at front and down at back delivering optimum coverage and overlap where needed.
- C.** Concave seams on the sleeves and back pleats provide greater ease of movement.
- D.** Shoulder yoke shaped for comfort, especially while wearing SCBA.
- E.** Double zip flap extends to neck with internal zip guard to protect throat.
- F.** Stiff standalone collar providing full protection for the neck and throat with soft knitted inner collar.
- G.** Durable YKK zip secures the front of the jacket. Vertical pocket under zip flap.

H. Ergonomically designed elbow includes new EOS padding system. SECURISKIN on the outside for increased durability.

I. Hem of sleeve curved over back of hand for additional protection. SECURISKIN around glove cuff for additional durability.

J. Particulate-blocking wrist cuffs with thumb loops.

K. Two large pockets with pull tab and hook and loop closure located on the back of the garment. Positioning reduces particulate build up and facilitates thorough, easy cleaning.

L. 3M™ SCOTCHLITE™ 5690 series triple trim. Flexible, durable, tear and catch resistant applied via heat transfer, flat against the outershell material eliminating a particulate build up point.

M. Particulate ingress blocking skirt around the torso secured by hook and loop tab.

N. Large inspection port with zip closure.

O. Hanging loop for storage.

P. Large logo / service branding area on the back of the jacket.

TROUSERS

- Q.** Natural waistline at front with high curved back.
- R.** Centrally placed YKK double zip including with hook and loop and press stud fastener.

S. High visibility, 48mm wide, adjustable "H" braces. Detachable.

T. Large cargo pockets with drain holes and pull tab.

U. Inside hem lined with neoprene to minimise abrasion from footwear.

V. Ergonomically designed knee with SECURISKIN fabric on the outside for increased durability. New internal padding system for comfort and protection.

W. 3M™ SCOTCHLITE™ 5690 series, heat transfer triple trim.

X. Large inspection port with zip closure.

Y. Trouser gator minimises convective heat flow and contamination up the trouser leg.

Z. Hook and loop closure. Abrasion resistant SECURISKIN fabric around perimeter of leg opening.

1. SECURISKIN panel on inside of ankle provides additional abrasion resistance and durability.

2. Hanger loop for easy storage.

PRODUCT SPECIFICATIONS

APPLICATION	Structural Firefighting
SIZES	28 Male 28 Female Made to measure sizes are available
CERTIFICATION	AS 4967:2019

CUSTOMISED TO MEET YOUR NEEDS

Pac Fire's standard EOS includes a PBI Max™ outershell fabric paired with the GORE® CROSSTECH AIRLOCK moisture barrier and a Glide Ice™ thermal liner.

EOS's design is completely customisable to meet a specific individual or agencies requirements. Lead times will apply for the production and delivery of MSA Bristol EOS.

OUTERSHELL FABRIC PBI MAX™ GOLD

PBI Max™ is a strong outershell fabrics, offering firefighters a combination of break-open and thermal protection with comfort and flexibility. PBI Max™ has a DuPont™ Teflon F-PPE water repellent finish.

Content: 30% Kevlar®, 70% PBI® Kevlar® Spun Yarns

Weight: 205gsm

Supplier: Safety Components

MOISTURE BARRIER GORE® CROSSTECH® AIRLOCK

A combination of thermal protection and moisture barrier which eliminates the need for extra-thick insulation. The construction uses thermally stable and chemically resistant foam silicone spacers to create an insulating air cushion, giving a high level of thermal protection without a bulky and restrictive insulation layer.

BLOOD AND BODILY FLUID PROTECTION

The CROSSTECH® System provides 99.9% protection against harmful blood borne pathogen and viral penetration. CROSSTECH® has been tested in accordance with ISO 16604/ASTM F 1671, procedure C, SOP-12-013. For this certification the laminate is tested for its resistance to blood borne pathogens using the bacteriophage PHI-X174 (same size as the smallest of the most dangerous pathogens).

Content: 2-layer laminate of PTFE film on meta-aramid/para-aramid non-woven with chemical-resistant closed cell foam silicone spacers

Weight: 225gsm

Supplier: W. L. Gore & Associates, Inc.

THERMAL BARRIER GLIDE ICE™

Glide Ice™ is a thermal layer developed by Safety Components. It has a distinctive ice blue design woven in Safety Components' patented weave that combines 60% DuPont™ Nomex® filament yarns with 40% Nomex® Lenzing FR® spun yarns. It is the DuPont™ Nomex® filament that allows Glide Ice™ to exhibit superior performance in slickness for freedom of movement, flexibility for enhanced mobility, and fast dry times.

Content: 60% Nomex® Filament, 40% Nomex® / Lenzing FR Spun Yarn

Supplier: Safety Components

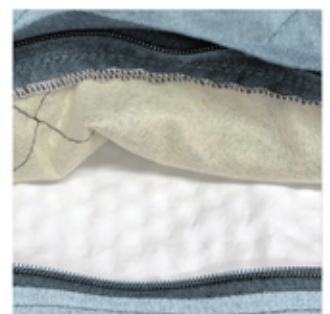
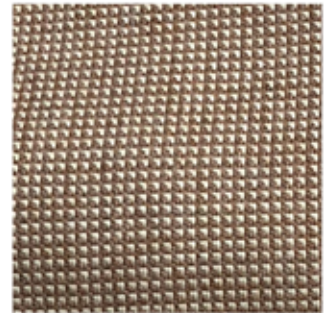
3M™ SCOTCHLITE™ TRANSFER 5690 SERIES COMFORT TRIM

3M™ Scotchlite™ 5690 series triple trim is a high quality, heat transfer applied, reflective tape especially designed for firefighting garments. This specialised trim enhances the visibility of the wearer while delivering heat resistance and exceptional durability.

Designed to move with the garment and the firefighter, 3M™ Scotchlite™ 5690 series tape eliminates raised areas common on traditional sewn on reflective trims, removing a build up point for contaminants and decreasing the frequency of trim related garment repairs.

Width: 50.8mm or 76.2mm

Supplier: 3M



EXPLORE EOS ONLINE



WATCH THE VIDEO